

ANGLE VALVES

arka-instalacje.pl

Angle valves, anti-lime Solid / Solid Bis / Solid Bis Pionowy

Technical specification

Maximum operating temperature: 100°C.
Maximum working pressure: 16 bar.

Norms

Product compliant with the
PED 2014/68/UE directive.
Certified product NIZP-PZH.

Surface finish

Art - chrome plated, polished.
Solid - chrome plated, shot blasted.

Solid

SOLID PIONOWY

Sizes:
1/2"x3/4"x3/8"

SOLID BIS

Sizes:
1/2"x3/4"x3/8"

SOLID

Sizes:
1/2"x3/8"
1/2"x1/2"
1/2"x3/4"



ANTI-LIME



TRIPLE
O-RINGS



FILTER



CERAMIC
HEAD



EUROPEAN
BRASS



ABS
KNOB



RIGHT/LEFT
ART BIS



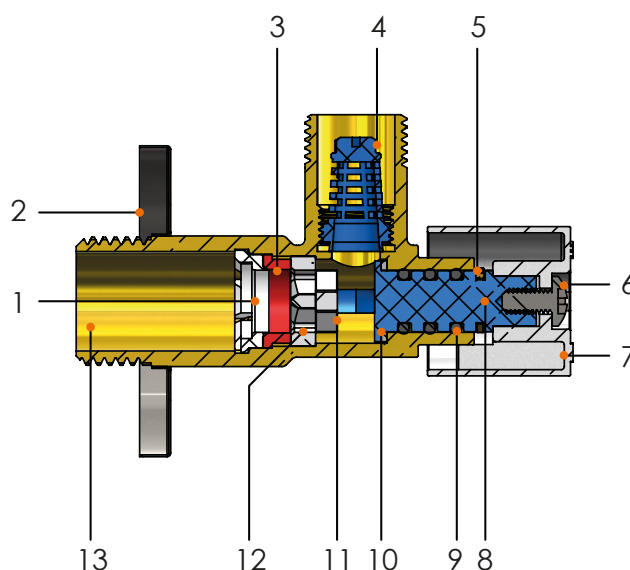
FOR DRINKING
WATER



GUARANTEE

Construction

No.	Elements	Material
1	Locking ring	ABS
2	Rosette	Stainless steel
3	Pressure ring	Silicon
4	Filter	ABS
5	Safety clip	Brass
6	Screw	Stainless Steel
7	Knob	ZAMAK
8	Pin	ABS
9	O-rings	EPDM
10	PIN Washer	PTFE
11	Insert rotating plate	Ceramic
12	Fixed Insert Plate	Ceramic
13	Valve body	Brass CW617N



Intended purpose

Angle valve **MULTI** is intended for installation in water supply installations. The valve is equipped with a closing system made using anti-scale technology. The design of the locking system allows you to choose between four settings: outlets, open open, closed open, closed -closed and open-closed. The multi valve, thanks to the use of two drain connectors, allows for the simultaneous supply of two devices, e.g. a wall-mounted tap and a household appliance, a washing machine or a dishwasher. This valve is equipped with a special 3/8x3/4 adapter with a cap and a set of seals, which allows for independent conversion of the valve to a right-hand or left-hand type, depending on the location of the powered household appliance.



MULTI

Sizes:

1/2"x3/4" x3/8"

Multi



ANTI-LIME



DOUBLE O-RINGS



INDEPENDANT OUTLETS



EUROPEAN BRASS



RIGHT/LEFT MULTI



FOR DRINKING WATER



GUARANTEE

Technical specification

Maximum working temperature: 95°C.

Maximum working pressure: 10 bar.

Norms

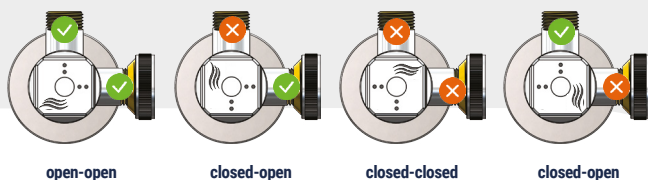
Product compliant with the standard PN-M-75002:2016-10.

Certified product NIZP-PZH.

Surface finish

Chrome plated, polished.

Knob - four settings



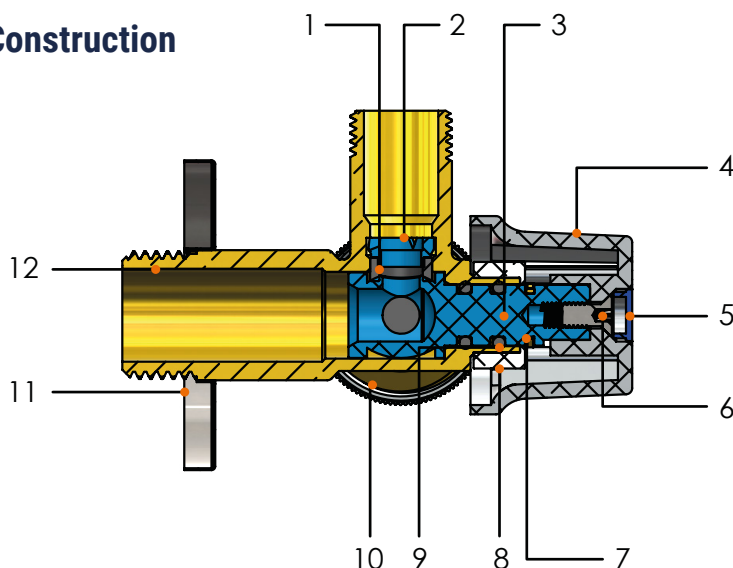
open-open

closed-open

closed-closed

closed-open

Construction



No.	Elements	Material
1	Stem seal	EPDM
2	Locking ring	POM
3	Pin	POM
4	Knob	ABS
5	Plug	LDPE
6	Screw	Stainless Steel
7	Safety clip	Brass CW614N
8	Slip ring	ABS
9	O-rings	EPDM
10	Adapter 3/8"x3/4"	Brass CW617N
11	Rolette	Stainless Steel
12	Valve body	Brass CW617N

Intended purpose

Angle valves **SMART** are designed for installation in water supply systems. They have a metal knob and a 1/4 turn closing system that allows for quick opening / closing of the valve. Their tightness is achieved thanks to the use of a double O-ring on the stem. The entire series of valves is equipped with a closing system made in anti-scale technology.

Smart



SMART

Sizes:

1/2"x3/8"

1/2"x1/2"

1/2"x3/4"

Technical specification

Maximum operating temperature: 95°C.

Maximum working pressure: 10 bar.

Norms

Product compliant with PN M 75002:2016-10.

Standard Certified product NIZP-PZH.

Surface finish

Chrome plated, polished.



ANTI-LIME



DOUBLE
O RINGS



METAL
KNOB



EUROPEAN
BRASS



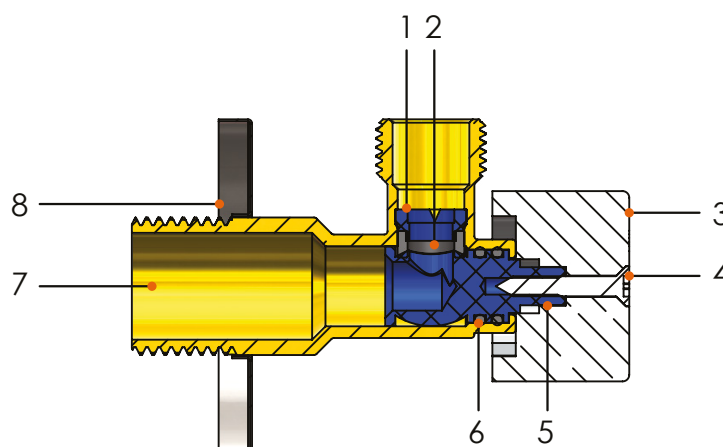
FOR DRINKING
WATER



GUARANTEE

Construction

No.	Elements	Material
1	Locking ring	POM
2	Sealing	EPDM
3	Knob	ZAMAK
4	Screw	Stainless steel
5	Pin	POM
6	O-rings	EPDM
7	Body	Brass CW617N
8	Rossete	Stainless Steel



Intended purpose

SMART angle valves with filter are designed for installation in water supply systems. They have a metal knob and a 1/4 turn closing system that allows for quick opening/closing of the valve. Their tightness is achieved by using a double O-ring on the stem. The entire series of valves is equipped with a filter and a closing system made in anti-scale technology. The anti-scale filter is mounted in the valve body and protects the powered device. In the case of service activities, access to the filter is possible after closing the valve and unscrewing the cap.



SMART with filter

Sizes:

1/2"x3/8"
1/2"x1/2"
1/2"x3/4"

Smart with filter



ANTI-LIME



DOUBLE
O RINGS



METAL
KNOB



EUROPEAN
BRASS



FOR DRINKING
WATER



GUARANTEE

Technical specification

Maximum operating temperature: 95°C.
Maximum working pressure: 10 bar.

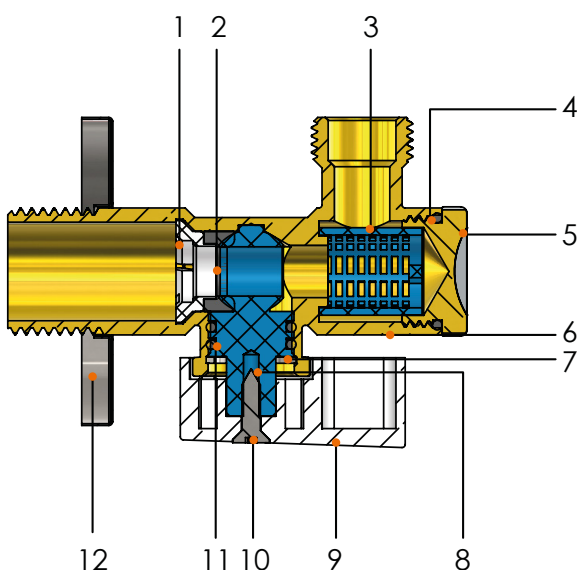
Norms

Product compliant with PN M 75002:2016-10.
Certified product NIZP-PZH.

Surface finish

Chrome plated, polished.

Construction

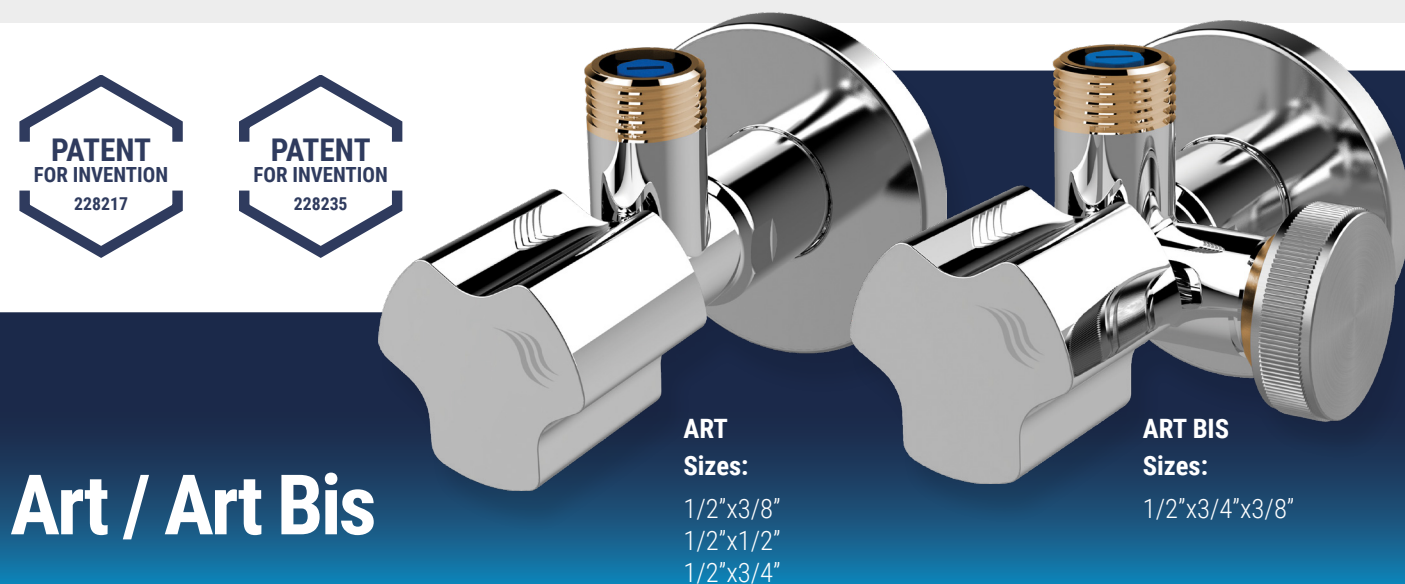


No.	Elements	Material
1	Locking ring	POM
2	Gasket	EPDM
3	Filtr	POM
4	O-rings	EPDM
5	Plug	Brass CW617N
6	Valve body	Brass CW617N
7	Locking ring	Stainless Steel
8	Pin	POM
9	Knob	ZAMAK
10	Screw	Stainless Steel
11	O-rings	EPDM
12	Rosette	Stainless Steel

Angle and Anti-Lime Art/Art Bis

Intended purpose

Angle valves ART/SOLID are intended for installation in water supply installations. They have a 1/4 turn closing system allowing for quick opening / closing of the valve. Their tightness is achieved by the use of a triple O-ring on the stem. The valves have a filter protecting the powered device, which is mounted in the valve outlet. The entire series of valves is equipped with filters and closing systems made using anti-scale technology. Valves **ART BIS/SOLID BIS/SOLID BIS PIONOWY** thanks to the use of two drain connectors (each equipped with a filter) enabling simultaneous power supply of two devices, e.g. a wall-mounted tap and a household appliance, a washing machine or dishwasher. **ART BIS/SOLID BIS** valves They are additionally equipped with a special 3/8 x 3/4 adapter with a cap and a set of seals, which allows for independent conversion of the valve to a „right” or „left” type, depending on the location of the powered household appliance.



ANTI-LIME



TRIPLE O-RINGS



FILTER



CERAMIC HEAD



CW617N

EUROPEAN BRASS



ABS KNOB



RIGHT/LEFT ART BIS



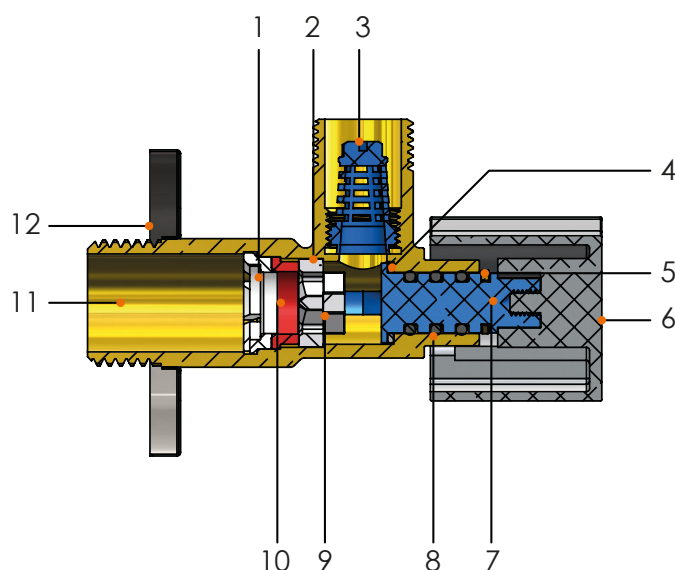
FOR DRINKING WATER



GUARANTEE

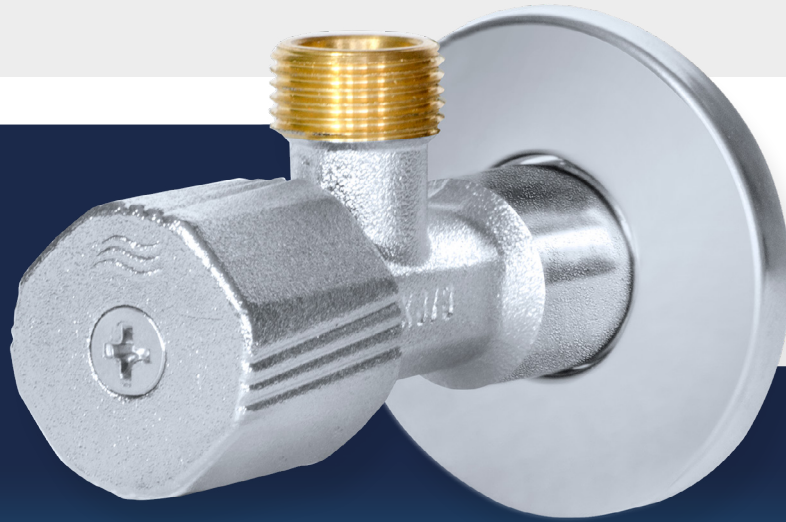
Construction

No.	Elements	Material
1	Locking ring	ABS
2	Fixed plate insert	Ceramic
3	Filter	ABS
4	Pin washer	PTFE
5	Safety clip	Brass
6	Knob	ABS
7	PIN	ABS
8	O-rings	EPDM
9	Insert rotating plate	Ceramic
10	Pressure ring	Silicon
11	Valve body	Brass CW617N
12	Rosette	Stainless steel



Intended purpose

TWIST angle valves are intended for installation in water supply installations. The valves have a metal knob, and the tightness of their closure is achieved by the cooperation of the seat surface and the metal-metal plug. The double o-ring of the closing stem ensures the external tightness of the product. Thanks to the patented two-part design of the closing pin, it is possible to replace the o-rings, keeping the water installation under pressure.

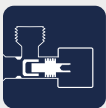


TWIST

Sizes:

1/2"x3/8"
1/2"x1/2"
1/2"x3/4"

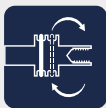
Twist



ANGLE VALVE
WITH HEAD



DOUBLE
O-RINGS



REPLACING
O-RINGS UNDER
INSTALLATION
PRESSURE



METAL
KNOB



LARGE WATER
FLOW



EUROPEAN
BRASS



FOR DRINKING
WATER



GUARANTEE

Technical specification

Maximum working temperature: 95°C.
Maximum working pressure: 10 bar.

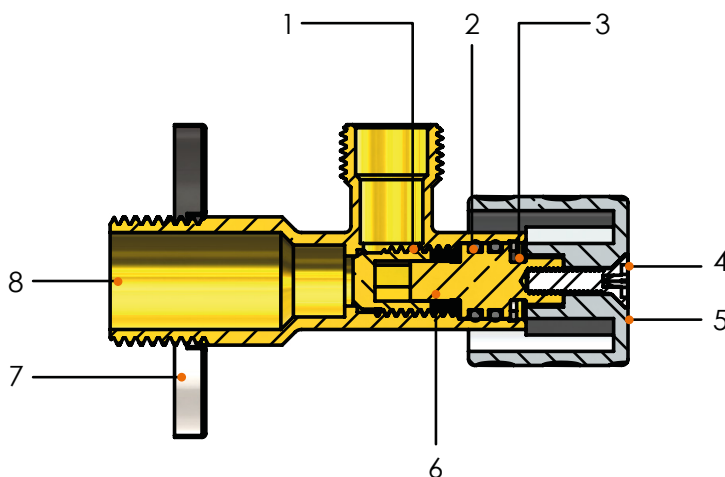
Norms

Product compliant with the
standard PN-M-75002:2016-10.
Certified product NIZP-PZH.

Surface finish

Chrome plated, shot blasted.

Construction



No.	Elements	Material
1	Head	Brass CW617N
2	O-rings	EPDM
3	Locking ring	Stainless Steel
4	Screw	Stainless Steel
5	Knob	ZAMAK
6	Pin	Brass CW617N
7	Rosette	Stainless Steel
8	Valve body	Brass CW617N



LEAFLET



CATALOG

Arka Sp. z o.o.
ul. Ogrodowa 5,
76-004 Sianów
Poland