

Water meter mounting console

Application:

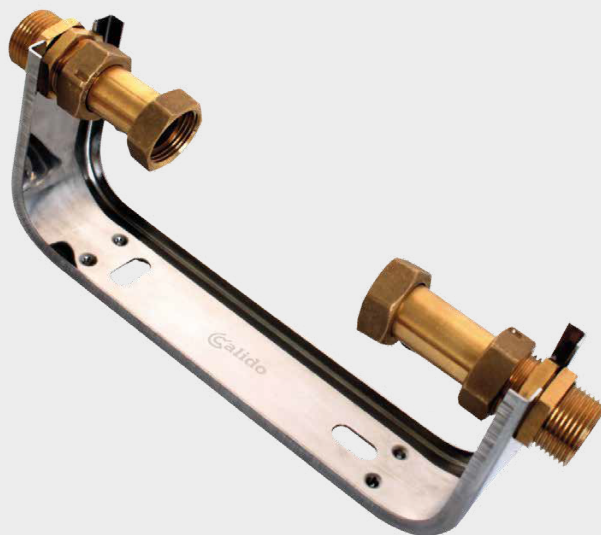
The Calido water meter console is used for the installation of a water meter in water systems. The stainless steel bracket 1.4301 is mounted directly to the wall using the mounting pins included in the set, which means that the tensions generated in the installation are not transmitted directly to the water meter. The applied telescopic half-unions facilitate the installation and periodic replacement of the water meter.

Technical data for telescopic half-unions:

- made of CW617N brass
- EPDM seals, technical fiber
- $T_{min} = 10^{\circ}\text{C}$, $T_{max} = 110^{\circ}\text{C}$, PN 10 bar

Certificates:

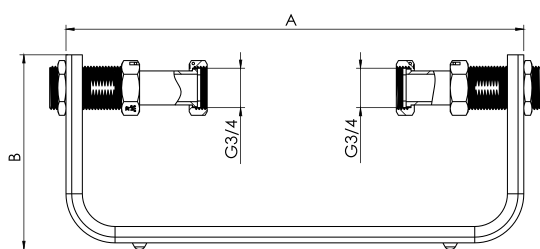
Product with Certificate **NIZP-PZH**
National Declaration of Utility Properties **4/calido/2024**
Product in accordance with the standard **PN-EN 1254-7:2021-10**



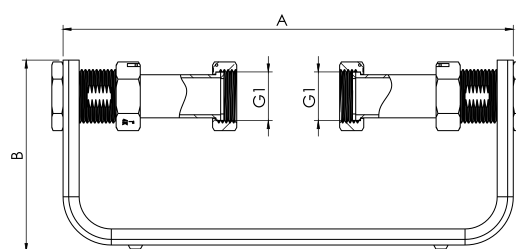
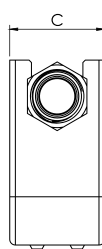
Dimensions:

WATER METER CONSOLE

Index	A [mm]	B [mm]	C [mm]	G
CA/KW-DN15-SN	274	59	124	3/4"
CA/KW-DN20-SN	274	59	124	1"



CA/KW-DN15-SN



CA/KW-DN20-SN

Water meter mounting console

Application:

The Calido water meter console is used for mounting the water meter in water installations. The DC01 steel console bracket, coated with paint, is directly mounted to the wall using the mounting plugs included in the kit, which ensures that the tensions generated in the installation are not directly transferred to the water meter. The applied telescopic half-union facilitate the installation and periodic replacement of the water meter.

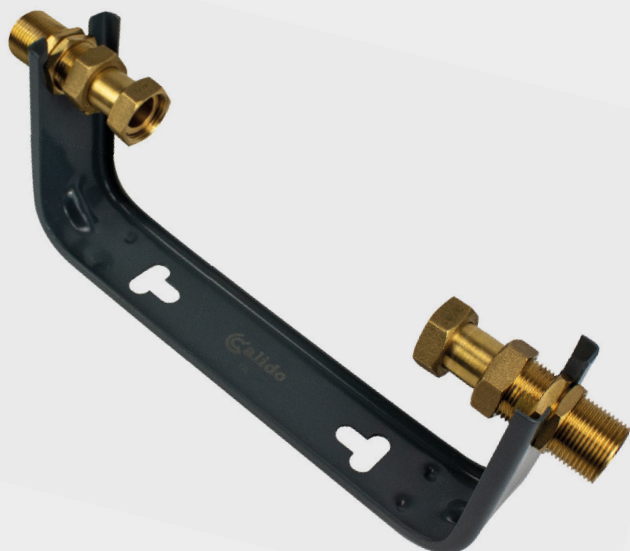
Technical data for telescopic half-unions:

- made of CW617N brass
- EPDM seals, technical fiber
- T_{min} = 10°C, T_{max} = 110°C, PN 10 bar

Certificates:

Product with Certificate **NIZP-PZH**
National Declaration of Utility Properties **4/calido/2024**
Product in accordance with the standard **PN-EN 1254-7:2021-10**

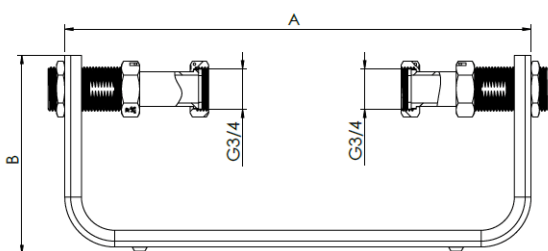
Marking



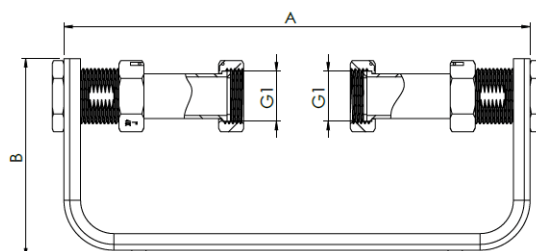
Dimensions:

WATER METER CONSOLE

Index	A [mm]	B [mm]	C [mm]	G
CA/KW-DN15	270	51	125	3/4"
CA/KW-DN20	270	51	125	1"



CA/KW-DN15



CA/KW-DN20