



Electronic pump

PALADIO

User Manual

Table of contents

1. Introduction.....	5
2. Types and Dimensions	5
2.1 Model Overview	5
2.1 Model Overview	6
3. Safety Instructions.....	7
4. Intended Use and Installation	8
4.1. Pumped Liquids.....	8
4.2. Liquid Temperature and Ambient Temperature	8
4.3 Installation	9
5. Characteristics and Operation	10
5.1 Control Panel – Description.....	10
5.2 Pump Settings	10
5.3 Automatic Pump Venting Function	12
5.4 Hydraulic Characteristics of the Pump	12
6. Technical Data	15
7. Troubleshooting.....	15
8. Warranty card	18

WARNINGS

You should familiarize yourself with the following notes before starting the installation and use of the pump.

- ! Before starting the pump, always make sure that the system is filled with water and prevent the pump from operating dry. Do not tighten or loosen the pump unions or the screws securing the pump head while the system is under pressure.
- ! The pump should be installed by qualified personnel in accordance with this operating and installation manual and with the principles of good installation practice. The manufacturer shall not be held liable for any damage resulting from improper installation of the pump.
- ! When the pump operates with high temperatures of the heating medium, there is a risk of burns upon contact with the pump casing.
- ! If leaks from the installation could endanger the pump's electronic systems, disconnect the power supply immediately.
- ! Use caution when servicing the electronic pump.
- ! The direction of pump installation must ensure that the motor shaft is horizontal; failure to do so may result in motor damage.
- ! The canned motor is of a special design. If the can sleeve is damaged as a result of a malfunction, the pumped liquid may penetrate into the stator winding and cause damage to the motor.
Before disassembling the pump, all shut-off valves shall be closed and the liquid inside the pump shall be completely drained. Disassembly may only be carried out after ensuring that no leaks are present.



Used Equipment Disposal Instructions

This pump is marked in accordance with the European Directive 2012/19/EU and the Polish Act of 11 September 2015 on Waste Electrical and Electronic Equipment (Journal of Laws of 23 October 2015, item 11688) with the symbol of a crossed-out waste container. This marking indicates that, at the end of its service life, the equipment must not be disposed of together with other household waste. The user is required to hand it over to an authorized collection point for waste electrical and electronic equipment.

Proper handling of waste electrical and electronic equipment helps to prevent harmful effects on human health and the environment, which may result from the presence of hazardous components and from improper storage or processing of such equipment.

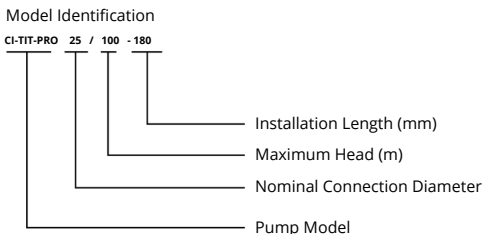
1. Introduction

The Paladio electronic circulation pump consists of a single-phase synchronous motor with permanent magnets and a cast-iron pump casing. The impeller, made of engineered plastic and mounted on a ceramic shaft, is enclosed in a stainless steel housing. An electronic control unit is mounted on the pump body, allowing adjustment of the pump's hydraulic characteristics.

Its compact size, low weight, and streamlined design make installation simple and convenient. This pump is an ideal, high-performance, and energy-efficient solution for domestic use.

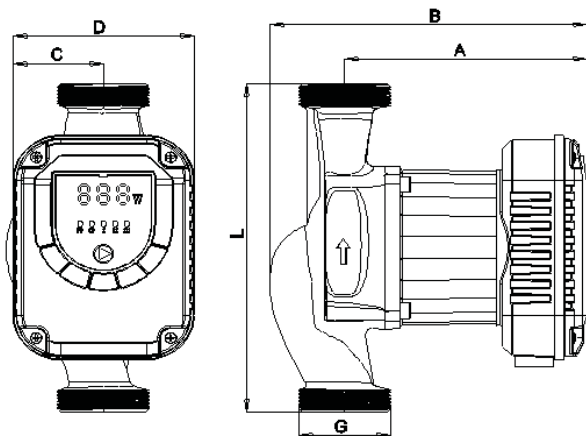
2. Types and Dimensions

2.1 Model Overview



Paladio									
Model	Pump Casing Connection Diameter	Thread	Maximum Flow Rate	Pump Head	Voltage	Frequency	Rated Power	Rated Current	EEI
	mm		m ³ /h	m	V	Hz	W	A	
CI-PALADIO 25/80-180	25	1 1/2"	5,2	8	220-240	50	63	0,27	0,21
CI-PALADIO 25/100-180	25	1 1/2"	6,1	10			120	0,52	0,22
CI-PALADIO 25/120-180	25	1 1/2"	7,5	12			150	0,65	0,22
CI-PALADIO 32/80-180	25	2"	5,2	8			63	0,27	0,21
CI-PALADIO 32/100-180	25	2"	6,1	10			120	0,52	0,22
CI-PALADIO 32/120-180	25	2"	7,8	12			150	0,65	0,22

2.1 Model Overview



Model	Dimension					Connection G
	A	B	C	D	L	
CI-PALADIO 25/80-180	124.5	163	46.5	93	180	1 1/2"
CI-PALADIO 25/100-180						
CI-PALADIO 25/120-180						
CI-PALADIO 32/80-180						2"
CI-PALADIO 32/100-180						
CI-PALADIO 32/120-180						

3. Safety Instructions



- Do not touch the pump casing while the pump is operating
- Never operate the pump without water
- The pump must be connected via a fuse to an external main switch. The pump must be properly grounded. It is recommended to use a residual current device (RCD) for additional protection.

1. The electronic pump is designed for a single-phase 230 V power supply with a frequency of 50 Hz.
2. Before installation, ensure that the piping system is securely connected and check that any debris, solder residues, or waste have been removed from the pipes.
3. Ensure that the pump is installed in a dry and well-ventilated environment to prevent short circuits caused by moisture or splashes and to guarantee accessibility for maintenance and replacement
4. It is recommended to install shut-off valves on the inlet and outlet connections to facilitate future maintenance and servicing of the pump.
5. Do not touch the pump or connected pipes during operation to avoid burns.
6. Before starting any maintenance or service activities, ensure that the pump is disconnected from the power supply to avoid the risk of electric shock or injury
7. Inspect the pump on a regular basis. If any damage is observed, the pump must be replaced immediately to ensure safe and reliable operation.
8. The power cable must only be replaced with a suitable, approved cable.
9. During winter, when the ambient temperature drops below 0°C and the pump is not operating, all water must be completely drained from the pipes.
10. The heating supply pipes must not be frequently refilled with untreated (hard) water. Doing so may cause calcium buildup inside the piping system, which can block the impeller.

4. Intended Use and Installation

4.1. Pumped Liquids

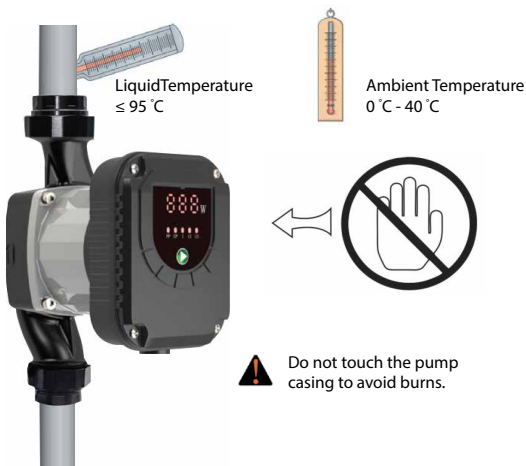
The pump may be used with clean water (according to PN-C-04607:1993) or a water–glycol mixture with up to 50% glycol concentration, free of solids, fibers, and other impurities.

The pump is intended for use in the following systems:

- non-aggressive, non-explosive liquids, free of solid particles and fibers
- liquids intended for heating system applications

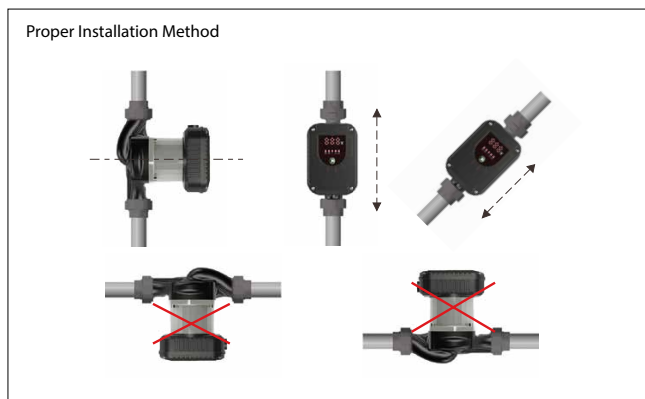
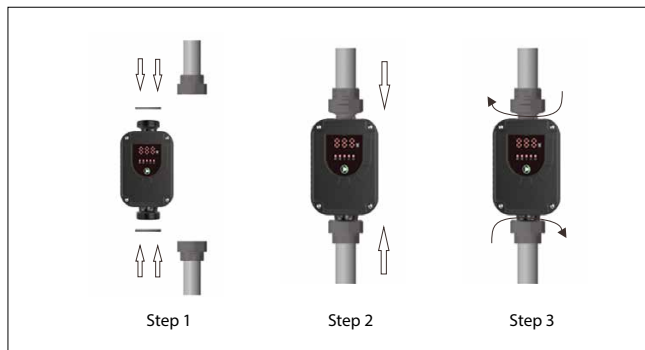


4.2. Liquid Temperature and Ambient Temperature



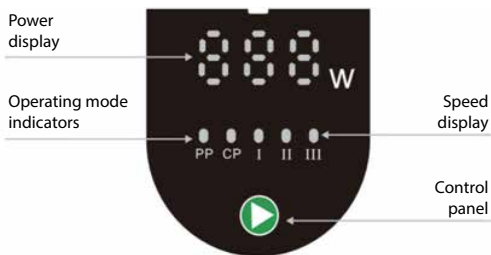
4.3 Installation

During installation, the motor shaft must be positioned horizontally, and the direction of fluid flow in the piping must match the arrow marked on the pump casing.



5. Characteristics and Operation

5.1 Control Panel - Description



5.2 Pump Settings

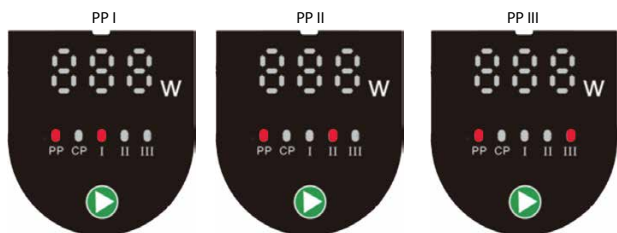
Adaptive Mode



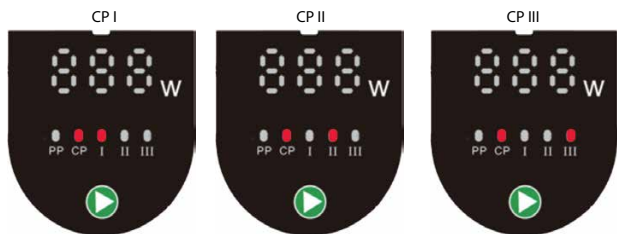
Constant Speed Curve



Proportional Pressure Curve



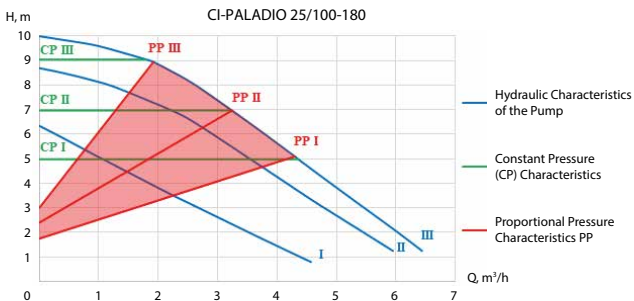
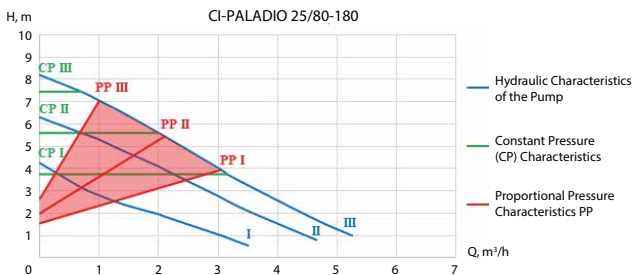
Constant Pressure Curve

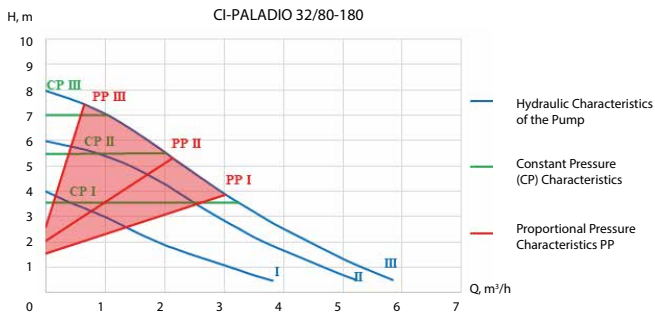
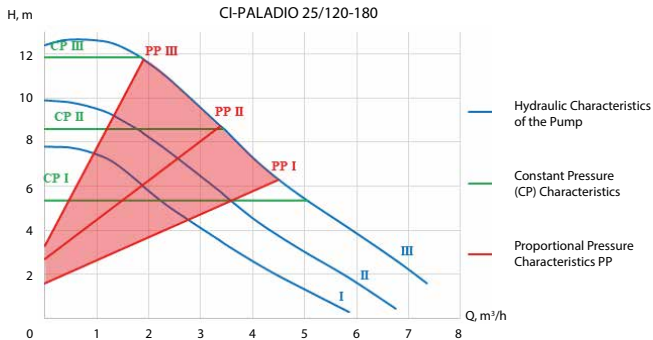


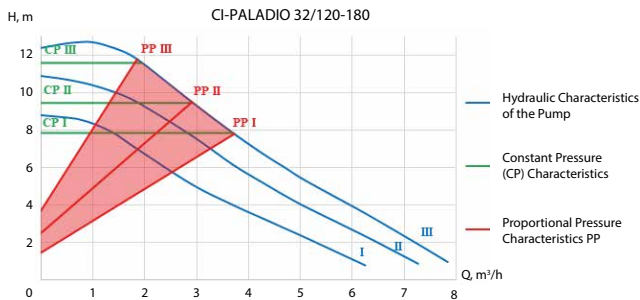
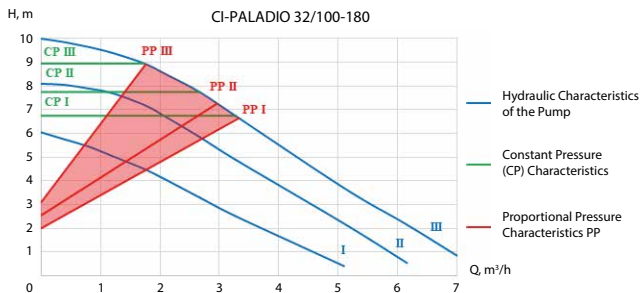
5.3 Automatic Pump Venting Function

The automatic venting function is activated by pressing and holding the button for 3–5 seconds. The pump then enters venting mode for 10 minutes, operating alternately at different speeds. After the automatic venting cycle is completed, the pump returns to the previously selected operating mode.

5.4 Hydraulic Characteristics of the Pump







6. Technical Data

Supply Voltage	230 V, 50 Hz
Protection Class	IP44
Insulation Class	F
System Pressure	10 bar
Liquid Temperature	≤ 95°C

7. Troubleshooting

Problem	Possible Cause	Solution
Pump does not operate	Incorrect power cable connection	Ensure that the power cable is correctly connected.
	Blown fuse	Replace the fuse
Noise in the pump or piping system	Debris inside the pump, blocked impeller	Disassemble the pump and remove any debris
	Flow rate setting is too high	Switch to a lower speed
	Air in the system or pump casing	Remove the air / bleed the pump
Pump runs but does not generate pressure	Inlet valve is closed	Open the valve
	System is air-locked	Bleed the system and the pump



Error Code Table

Error Code	Description
E01	Impeller blocked
E02	Phase loss
E03	Excessive temperature of the electronic control system
E04	Current overload (short circuit in the pump)
E05	Software malfunction
E06	Dry-run protection

Deklaracja zgodności UE

nr 2/circula/2025

1. Model produktu:

CI-PALADIO-POMPA ELEKTRONICZNA OBIEGOWA

Kod produktu (indeks):

CI-PALADIO 25/80-180; CI-PALADIO25/100-180; CI-PALADIO25/120-180;
CI-PALADIO 32/80-180; CI-PALADIO32/100-180; CI-PALADIO32/120-180

2. Nazwa i adres producenta lub jego upoważnionego przedstawiciela:

ARKA Sp. z o.o.
ul. Ogrodowa 5
76-004 Sianów

3. Niniejsza deklaracja zgodności wydana zostaje na wyłączną odpowiedzialność producenta.

4. Zgodność przedmiotu deklaracji potwierdzona certyfikatem:

Certyfikat nr: TD18712401

5. Wymieniony powyżej przedmiot deklaracji niniejszej deklaracji zgodności UE jest zgodny z odpowiednimi wymaganiami unijnego prawodawstwa harmonizacyjnego:

Dyrektywa 2014/35/UE (LVD)
Dyrektywa 2014/30/UE (EMC)
Dyrektywa 2006/42/WE (MD)
Dyrektywa 2009/125/WE (Ekoprojekt)

6. Odniesienia do odnośnych norm zharmonizowanych, które zastosowano, lub do innych specyfikacji technicznych, w stosunku do których deklarowana jest zgodność:

EN IEC 55014-1:2021; EN IEC 61000-3-2:2019+A1:2021
EN 61000-3-3:2013+A1:2019+A2:2021/AC:2022-01; EN IEC 55014-2:2021
EN 60335-1:2012+A11:2014+A13:2017+A1:2019+A14:2019+A2:2019
EN 62233:2008; EN 60335-2-41:2003+A1:2004+A2:2010
EN ISO 12100:2010; EN 809:1998+A1:2009+AC:2010

Sianów, 20 sierpnia 2025 r.

.....
(miejsce i data wystawienia)

 **ARKA**

Arka Sp. z o.o.

Tomasz Bamburak
Dyrektor ds. Wdrożeń i Rozwoju B+R

.....
(podpis osoby upoważnionej)

8. Warranty card

Pump model	Vendor's stamp	Date of Sale/ vendor's signature

ARKA Company provides a 24-month warranty on the product, starting from the date of its sale, on the condition that the Buyer adheres to the installation, usage, and maintenance instructions. The warranty covers only manufacturing defects in material and workmanship arising from the production process.

The warranty does not cover:

- mechanical damage,
- damage resulting from the installation of the pump contrary to the installation instructions or unauthorised interference,
- damage resulting from improper use or handling of the pump,
- damage caused by the ingress of solid contaminants into the interior of the pump,
- damage resulting from freezing, lightning strikes or defects in the electrical installation, in particular the moisture of electrical connections,
- damage resulting from the pump operating in dry running conditions.

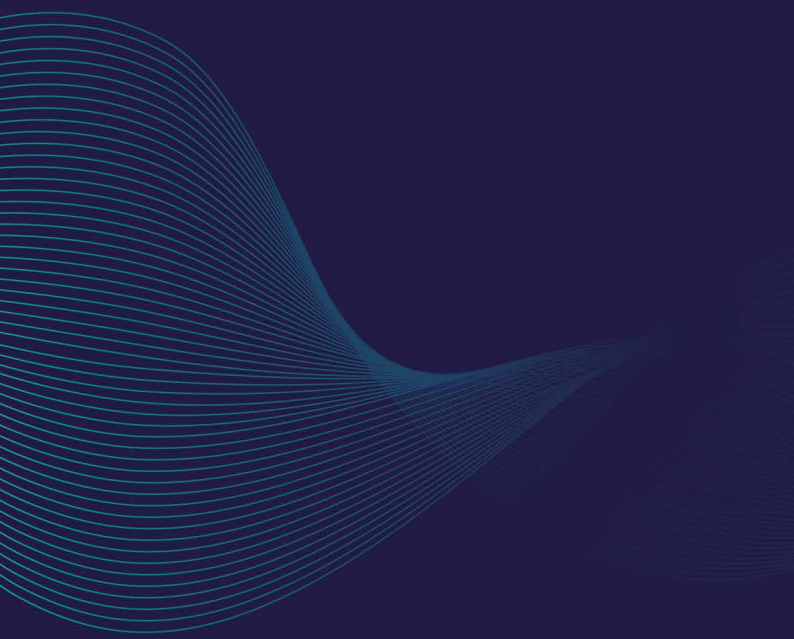
The basis for considering a warranty claim by the company ARKA is the possession of proof of purchase and this warranty card.

Complaint submissions are accepted:

- through the point of sale where the product was purchased - in such a case, the above documents must be provided along with the defective goods,
- by electronic means: form on the website, fax /94/ 346-27-68,
- helpline 889-808-808 (on business days from 8:00 to 16:00).

This warranty does not exclude, limit, or diminish the buyer's rights arising from the non-conformity of the goods with the contract.

The warranty is valid only within the territory of the Republic of Poland.



Producent / Producer:

Arka Sp. z o.o.

Ogrodowa 5, 76-004 Sianów,

Polska / Poland

arka-instalacje.pl