



**Product  
catalogue**

2026

Project  
Innovation  
Design

# Our mission

---

**We make the work of installers easier by creating innovative products with passion.**

Wanting to meet the expectations of our partners, we combine experience with science and the development of technical knowledge. We build long-term relationships.



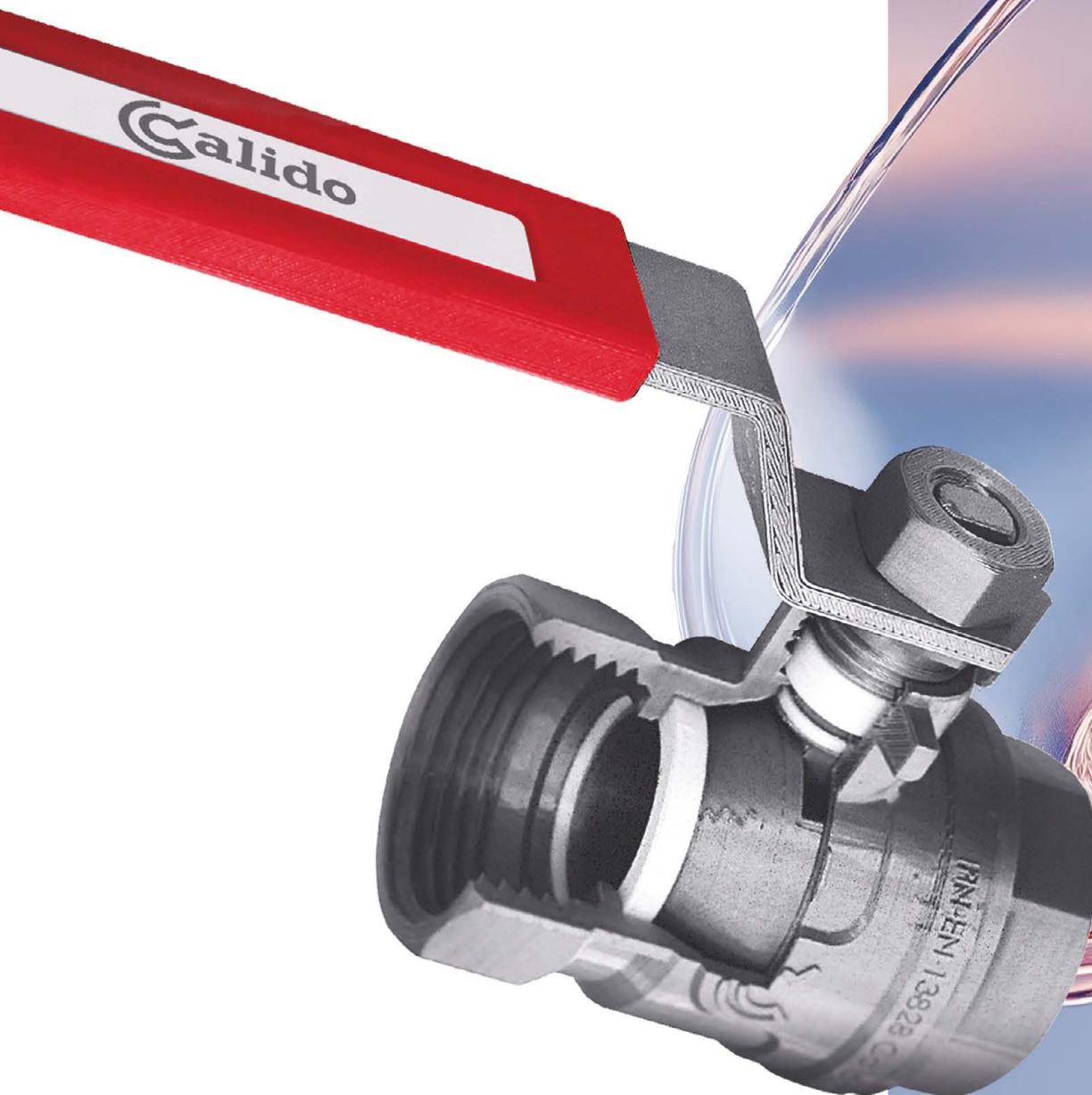
# Products

---

Our company's offer includes a wide range of products, from valves to advanced installation systems that are used in many different market sectors.

Our team of designers from the Implementation and Development Department is constantly working on new products, using the latest technologies and materials to ensure the quality of products required by customers.

We have our own design department, prototype shop and laboratory, thanks to which it is possible to ensure the appropriate engineering level of the developed solutions.



# Innovation

Innovations are one of the foundations on which we build the company's success.

We create original solutions that obtain patent protection as an invention, industrial or utility pattern.

Each innovation is a response to specific market needs, which allows us to offer products that make the work of installers easier.



# Technology

---

Cooperation with the Koszalin University of Technology is a key element of our commitment to product innovation and focuses mainly on industrial design, strength and certification tests.

We comply with the international quality management standard ISO 9001:2015, which directly translates into increased operational efficiency of the company.





## Quality control

---

Our approach to product quality is at the highest level and includes control at every stage of the production process.

Before leaving the production lines, our products are subjected to tests and examinations to check their tightness and durability.

The Quality Control Department checks each delivery of the finished product. This practice allows us to deliver high-quality products to the market.

# Warehouse

---

Warehouses play a key role in maintaining the continuity and efficiency of logistics processes such as receiving deliveries, storing, picking and shipping products.

We have three warehouses with a total area of 4,500 m<sup>2</sup> - 7,200 pallet spaces, which allows us to maintain high efficiency of inventory management.

We optimize all logistics processes, expanding warehouse space and equipping employees with devices that improve work efficiency.





## **Awards**

---

We proudly accept a number of awards and distinctions that confirm our commitment and effectiveness of our activities.

They are also evidence of dynamic development, confirmed by independent authorities and organisations, based on, among others, financial results.

Each of these distinctions motivates us to continue working, investing in development and searching for new, better solutions.



## **Production**

---

We have our own production facility with an area of 1,800 m<sup>2</sup>, equipped with e.g.: a modern laser cutting machine, CNC machining centres, a CNC coordinate drilling machine, a press brake, a welding plant and a powder coating plant.



We have built our machine park to achieve high quality products and ensure the required efficiency and repeatability of all processes. We produce based on our own designs, which follow our customers' guidelines.

# Contents

## 1. Ball, angle and check valves, filters and separators

Angle valves	14
Anti-lime ball valves S40 PRO series for drinking water	16
Ball valves S30	18
Drain ball valves S30	25
Ball valves mini S30	25
Ball valves mini for PEX 16 x 2.0 pipes	26
Ball valves S30 N	26
Garden ball valves	30
Farmer ball valves	31
Plugs with ball valves	32
Valves for heating	33
Pump bypasses	34
Safety groups for central heating system	35
Safety groups for domestic hot water installation	35
Differential valves	36
Check valves	36
Manual radiator valves	38
Radiator valves with compression fitting for PE 16x2.0 and Cu 15 mm pipes	39
Thermostatic radiator valves with pre-setting	40
Bottom radiators connectors	41
Connectors for Cu pipes	42
Thermostatic radiator heads	42
Thermostatic sets	42
Filters and separators	44

## 2. Connection hoses

Karbo hoses in nylon braid, internal PE-RT corrugated pipe, q=28 l/min	50
--	----

## 3. Brass fittings

Brass fittings	54
Threaded brass fittings	54
Soldered brass fittings	61
Connectors with moveable nut	62
Brass connectors, polished, chrome-plated	63

#### 4. Underfloor heating

PEX pipe connectors	68
Stainless steel manifolds	68
Stainless steel mixing groups	70
Stainless steel dual-function mixing systems	71
Pump groups	71
Installation cabinets for manifolds	73

#### 5. Pumps

Domestic hot water circulation pumps	78
Electronic circulation pumps	79

#### 6. Measuring instruments

Water meter	86
Water meter installation consoles	86
Manometers	86
Thermomanometers	87
Thermometers	87

#### 7. Spare parts

Spare parts for S30 series valves	90
Spare parts for S30 N series valves	91
Spare parts	92
Spare parts for straight gas filters	93
Spare parts for garden series valves	93
Spare parts for drain valves	93
Spare parts for radiator valves	94
Radiator caps and nipples	96
Keys for the air vent	96
Spare parts for angle valves	97
Spare parts for smart angle valves with filter	97
Spare parts for cast-iron straight valves	97
Accessories for connectors	97
Air vents	98
Spare parts for angled water filter	98
Spare parts for pump groups	99
Accessories for cabinets	100
Accessories for mixing systems	100
Accessories for manifold	100
Accessories for press fittings	103
Accessories for pumps	104

#### 8. ISO Certificates and Patents

ISO Certificates	108
Patents	109
Notebook	114

# 1

**BALL, ANGLE AND CHECK VALVES,  
FILTERS AND SEPARATORS**

---

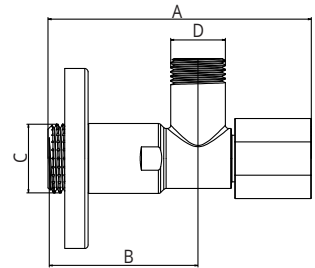


Ball valve S30 PRO F/F Calido

- **Reinforced** body
- **Innovative dynamic** sealing
- **Innovative solution**
- **High operating** parameters
- **5-year** warranty

**ANGLE VALVES**
**SOLID SERIES**
**ANTI-LIME ANGLE VALVE**

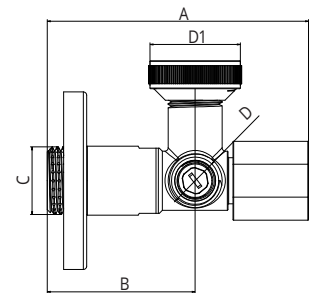
with filter, metal knob, shot-blasted

**T max 100°C**
**PN 16 bar**


size	code	dimensions				pcs / pack	pcs / box
		A (mm)	B (mm)	C	D		
1/2" x 3/8"	D/ZK-SOLID1238	80	45	1/2" M	3/8" M	1	56
1/2" x 1/2"	D/ZK-SOLID1212	80	45	1/2" M	1/2" M	1	56
1/2" x 3/4"	D/ZK-SOLID1234	80	45	1/2" M	3/4" M	1	56

**SOLID BIS SERIES**
**ANTI-LIME ANGLE VALVE  
TWO OUTLETS**

 washing machine/dishwasher,  
with filter, metal knob, shot-blasted

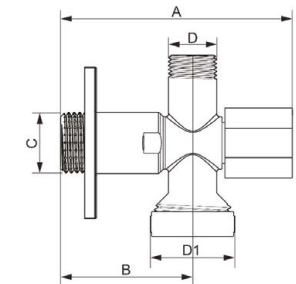
**T max 100°C**
**PN 16 bar**


size	code	dimensions					pcs / pack	pcs / box
		A (mm)	B (mm)	C	D1*	D		
1/2" x 3/4" x 3/8"	D/ZK-SOLIDBIS123438	80	45	1/2" M	3/4" M	3/8" M	1	42

\* 3/8" x 3/4" adapter may be installed on one of the two outlets, as required

**SOLID BIS VERTICAL SERIES**
**ANTI-LIME ANGLE VALVE  
TWO OUTLETS**

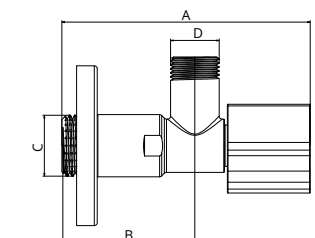
 washing machine/dishwasher  
with filter, metal knob, shot-blasted

**T max 100°C**
**PN 16 bar**


size	code	dimensions					pcs / pack	pcs / box
		A (mm)	B (mm)	C	D1	D		
1/2" x 3/4" x 3/8"	D/ZK-SOLIDBISP123438	80	45	1/2" M	3/4" M	3/8" M	1	42

**ART SERIES**
**ANTI-LIME ANGLE VALVE**

with filter, ABS knob, polished

**T max 100°C**
**PN 16 bar**


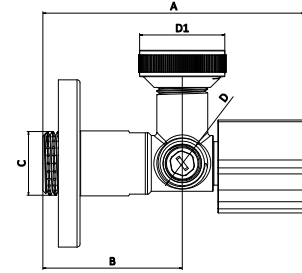
size	code	dimensions				pcs / pack	pcs / box
		A (mm)	B (mm)	C	D		
1/2" x 3/8"	D/ZK-ART1238	84	45	1/2" M	3/8" M	1	56
1/2" x 1/2"	D/ZK-ART1212	84	45	1/2" M	1/2" M	1	56
1/2" x 3/4"	D/ZK-ART1234	84	45	1/2" M	3/4" M	1	56

### ART BIS SERIES

#### ANTI-LIME ANGLE VALVE TWO OUTLETS

washing machine/dishwasher,  
with filter, ABS knob, polished

**T max** 100°C  
**PN** 16 bar



size	code	dimensions					pcs / pack	pcs / box
		A (mm)	B (mm)	C	D1*	D		
1/2" x 3/4" x 3/8"	D/ZK-ARTBIS123438	84	45	1/2" M	3/4" M	3/8" M	1	42

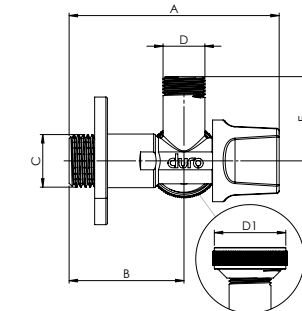
\*3/8" x 3/4" adapter may be installed on one of the two outlets, as required

### MULTI

#### ANTI-LIME ANGLE VALVE TWO OUTLETS

with 4 settings, ABS knob, polished

**T max** 95°C  
**PN** 10 bar



size	code	dimensions						pcs / pack	pcs / box
		A (mm)	B (mm)	E (mm)	C	D1*	D		
1/2" x 3/4" x 3/8"	D/ZK-MULTI123438	82	45	33	1/2" M	3/4" M	3/8" M	1	100

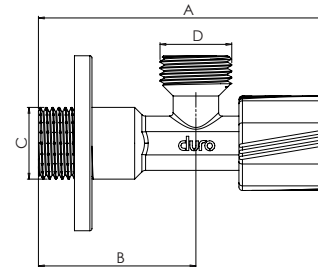
\*3/8" x 3/4" adapter may be installed on one of the two outlets, as required

### TWIST SERIES

#### ANGLE GLOBE VALVE

metal knob, shot-blasted

**T max** 95°C  
**PN** 10 bar



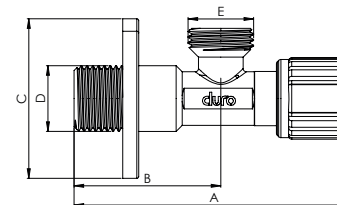
size	code	dimensions				pcs / pack	pcs / box
		A (mm)	B (mm)	C	D		
1/2" x 3/8"	D/ZKG-TWIST1238	83	45	1/2" M	3/8" M	1	100
1/2" x 1/2"	D/ZKG-TWIST1212	83	45	1/2" M	1/2" M	1	100
1/2" x 3/4"	D/ZKG-TWIST1234	83	45	1/2" M	3/4" M	1	100

### FUNGO SERIES

#### ANGLE GLOBE VALVE

metal knob,  
chrome-plated, polished

**T max** 95°C  
**PN** 10 bar



size	code	dimensions					pcs / pack	pcs / box
		A (mm)	B (mm)	C (mm)	D	E		
1/2" x 3/8"	D/ZKG-FUNGO1238	88	46	50	1/2" M	3/8" M	1	80
1/2" x 1/2"	D/ZKG-FUNGO1212	88	46	50	1/2" M	1/2" M	1	80
1/2" x 3/4"	D/ZKG-FUNGO1234	88	46	50	1/2" M	3/4" M	1	80

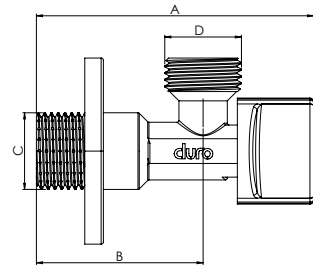
**SMART SERIES**

**ANTI-LIME ANGLE VALVE**

metal knob, polished

**T max** 95°C

**PN** 10 bar



size	code	dimensions				pcs / pack	pcs / box
		A (mm)	B (mm)	C	D		
1/2" x 3/8"	D/ZK-SMART-1238	75	45	1/2" M	3/8" M	1	80
1/2" x 1/2"	D/ZK-SMART-1212	75	45	1/2" M	1/2" M	1	80
1/2" x 3/4"	D/ZK-SMART-1234	75	45	1/2" M	3/4" M	1	80

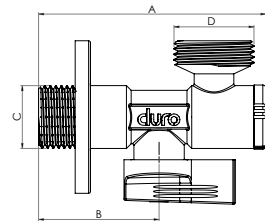
**SMART SERIES WITH FILTER**

**ANTI-LIME ANGLE VALVE**

with filter, metal knob, polished

**T max** 95°C

**PN** 10 bar



size	code	dimensions				pcs / pack	pcs / box
		A (mm)	B (mm)	C	D		
1/2" x 3/8"	D/ZK-SMART-F-1238	75	40	1/2" M	3/8" M	1	80
1/2" x 1/2"	D/ZK-SMART-F-1212	75	40	1/2" M	1/2" M	1	80
1/2" x 3/4"	D/ZK-SMART-F-1234	75	40	1/2" M	3/4" M	1	80

**ANTI-LIME BALL VALVES S40 PRO SERIES FOR DRINKING WATER**

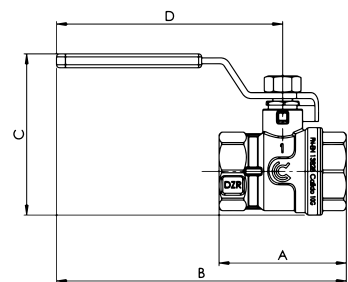
**S40 PRO SERIES**

**ANTI-LIME BALL VALVE F/F**

gland, ball coated with nanoceramics (anti-lime material), stainless steel lever with a window

**Working temp.** -20°C÷150°C

**PN** 40 bar



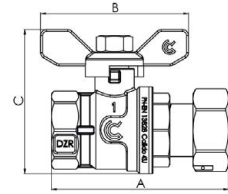
size	code	dimensions				pcs / pack	pcs / box
		A (mm)	B (mm)	C (mm)	D (mm)		
1/2"	CA/ZK-S40A-WWR15-OK	49	119	62	94	30	60
3/4"	CA/ZK-S40A-WWR20-OK	56	122	69	94	24	48
1"	CA/ZK-S40A-WWR25-OK	64	146	81	114	12	24
1 1/4"	CA/ZK-S40A-WWR32-OK	76	151	90	114	8	16
1 1/2"	CA/ZK-S40A-WWR40-OK	87	199	102	155	6	12
2"	CA/ZK-S40A-WWR50-OK	102	207	118	155	4	8

**S40 PRO SERIES**

**ANTI-LIME BALL VALVE F/F WITH MOVEABLE NUT**

gland, ball coated with nanoceramics (anti-lime material) with a butterfly

**Working temp.** -20°C÷150°C  
**PN** 40 bar



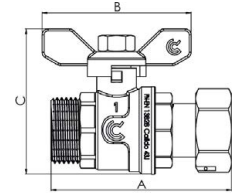
size	code	dimensions			pcs / pack	pcs / box
		A (mm)	B (mm)	C (mm)		
1/2"	CA/ZK-S40-WWRNM15	72	54	53	28	56
3/4"	CA/ZK-S40-WWRNM20	81	54	61	20	40
1"	CA/ZK-S40-WWRNM25	95	75	76	9	18

**S40 PRO SERIES**

**ANTI-LIME BALL VALVE F/M WITH MOVEABLE NUT**

gland, ball coated with nanoceramics (anti-lime material) with a butterfly

**Working temp.** -20°C÷150°C  
**PN** 40 bar



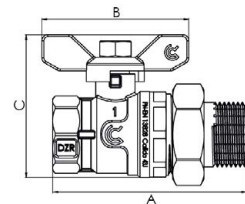
size	code	dimensions			pcs / pack	pcs / box
		A (mm)	B (mm)	C (mm)		
1/2"	CA/ZK-S40-WZRN15	72	54	54	28	56
3/4"	CA/ZK-S40-WZRN20	82	54	62	20	40
1"	CA/ZK-S40-WZRN25	91	75	73	9	18

**S40 PRO SERIES**

**ANTI-LIME BALL VALVE F/M WITH HALF UNION**

gland, ball coated with nanoceramics (anti-lime material) with a butterfly

**Working temp.** -20°C÷150°C  
**PN** 40 bar



size	code	dimensions			pcs / pack	pcs / box
		A (mm)	B (mm)	C (mm)		
1/2"	CA/ZK-S40-WZPM15	78	54	54	20	40
3/4"	CA/ZK-S40-WZPM20	81	54	61	16	32
1"	CA/ZK-S40-WZPM25	99	75	73	16	32

## S30 PRO BALL VALVES

Since August 2025, we have introduced **S30 PRO valves**, which will gradually replace **the S30 valves** under the same codes.



- ✔ **Stainless steel ball**  
*elimination of water contact with chromium*
- ✔ **A lever and nut** made  
 of stainless steel  
*corrosion resistance*
- ✔ **A butterfly** made of powder-coated  
 carbon steel  
*resistance to mechanical damage*
- ✔ **CW617N brass compliant**  
**with 4MS guidelines**  
*for reduced lead and nickel content.*

### BALL VALVES S30

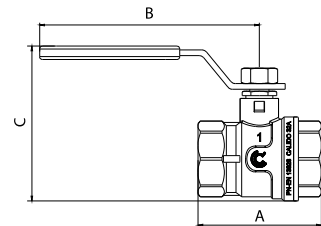
#### S30 SERIES

#### BALL VALVE F/F

gland, lever with a window

**Working temp.** -20°C÷150°C

**PN** 30 bar



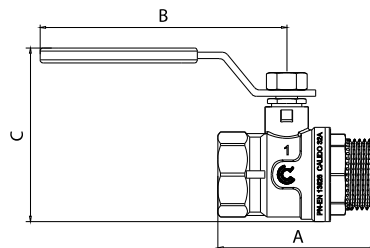
size	code	dimensions			pcs / pack	pcs / box
		A (mm)	B (mm)	C (mm)		
1/4"	CA/ZK-WWR08-OK*	41	70	49	60	120
3/8"	CA/ZK-WWR10-OK*	41	70	49	60	120
1/2"	CA/ZK-WWR15-OK*	49	94	63	30	60
3/4"	CA/ZK-WWR20-OK*	56	94	70	20	40
1"	CA/ZK-WWR25-OK*	64	114	81	12	24
1 1/4"	CA/ZK-WWR32-OK*	76	114	91	10	20
1 1/2"	CA/ZK-WWR40-OK	87	154	104	6	12
2"	CA/ZK-WWR50-OK	102	154	118	4	8
2 1/2"	CA/ZK-WWR65-OK	132	174	142	-	5
3"	CA/ZK-WWR80-OK	152	238	168	-	2
4"	CA/ZK-WWR100-OK	176	238	190	-	2

\* version with blue handle code - N

**S30 SERIES**

**BALL VALVE F/M**

gland, lever with a window  
**Working temp.** -20°C÷150°C  
**PN** 30 bar



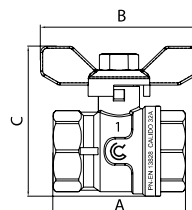
size	code	dimensions			pcs / pack	pcs / box
		A (mm)	B (mm)	C (mm)		
1/2"	CA/ZK-WZR15-OK*	56	94	63	30	60
3/4"	CA/ZK-WZR20-OK*	64	94	70	20	40
1"	CA/ZK-WZR25-OK*	73	114	81	12	24
1 1/4"	CA/ZK-WZR32-OK*	85	114	90	10	20
1 1/2"	CA/ZK-WZR40-OK	98	154	104	6	12
2"	CA/ZK-WZR50-OK	119	154	118	2	4

\* version with blue handle code - N

**S30 SERIES**

**BALL VALVE F/F**

gland, butterfly lever type  
**Working temp.** -20°C÷150°C  
**PN** 30 bar



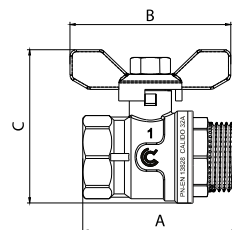
size	code	dimensions			pcs / pack	pcs / box
		A (mm)	B (mm)	C (mm)		
3/8"	CA/ZK-WWM10*	41	54	46	60	120
1/2"	CA/ZK-WWM15*	49	54	54	40	80
3/4"	CA/ZK-WWM20*	56	54	61	25	50
1"	CA/ZK-WWM25*	64	75	73	14	28

\* version with blue handle code - N

**S30 SERIES**

**BALL VALVE F/M**

gland, butterfly lever type  
**Working temp.** -20°C÷150°C  
**PN** 30 bar



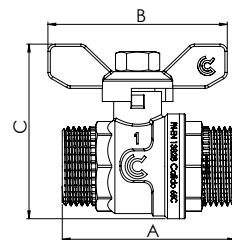
size	code	dimensions			pcs / pack	pcs / box
		A (mm)	B (mm)	C (mm)		
1/2"	CA/ZK-WZM15*	56	54	54	40	80
3/4"	CA/ZK-WZM20*	64	54	61	25	50
1"	CA/ZK-WZM25*	73	75	73	14	28

\* version with blue handle code - N

**S30 SERIES**

**BALL VALVE M/M**

gland, butterfly lever type  
**Working temp.** -20°C÷150°C  
**PN** 30 bar



size	code	dimensions			pcs / pack	pcs / box
		A (mm)	B (mm)	C (mm)		
1/2"	CA/ZK-ZZM15*	56	54	54	40	80
3/4"	CA/ZK-ZZM20*	64	54	61	24	48
1"	CA/ZK-ZZM25*	72	75	73	14	28

\* version with blue handle code - N

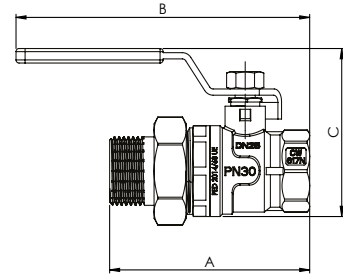
**S30 SERIES**

**BALL VALVE F/M STRAIGHT WITH HALF UNION**

gland, lever with a window

**T max 110°C**

**PN 30 bar**



size	code	dimensions			pcs / pack	pcs / box
		A (mm)	B (mm)	C (mm)		
1/2" x 3/4" x 1/2"	CA/ZK-WZPR15-OK*	78	118	62	20	40
3/4" x 1" x 3/4"	CA/ZK-WZPR20-OK*	87	122	69	14	28
1" x 1 1/4" x 1"	CA/ZK-WZPR25-OK*	99	146	81	8	16

\* version with blue handle code - N

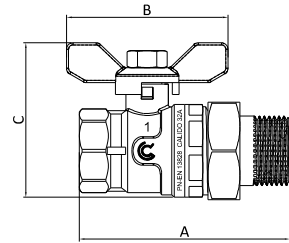
**S30 SERIES**

**BALL VALVE F/M STRAIGHT WITH HALF UNION**

gland, butterfly lever type

**T max 110°C**

**PN 30 bar**



size	code	dimensions			pcs / pack	pcs / box
		A (mm)	B (mm)	C (mm)		
1/2" x 3/4" x 1/2"	CA/ZK-WZPM15*	78	54	56	25	50
3/4" x 1" x 3/4"	CA/ZK-WZPM20*	87	54	64	20	40
1" x 1 1/4" x 1"	CA/ZK-WZPM25*	99	75	77	10	20

\* version with blue handle code - N

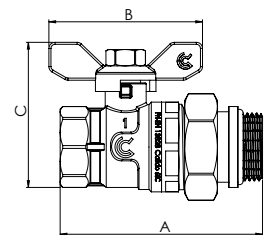
**S30 SERIES**

**BALL VALVE F/M STRAIGHT WITH HALF UNION AND O-RING**

gland, butterfly lever type

**T max 110°C**

**PN 30 bar**



size	code	dimensions			pcs / pack	pcs / box
		A (mm)	B (mm)	C (mm)		
1/2" x 3/4" x 1/2"	CA/ZK-WZPM15-O*	81	54	56	20	40
3/4" x 1" x 3/4"	CA/ZK-WZPM20-O*	86	54	61	12	24
1" x 1 1/4" x 1"	CA/ZK-WZPM25-O*	102	75	72	8	16
1 1/4" x 1 1/2" x 1 1/4"	CA/ZK-WZPM32-O*	114	75	82	6	12

\* version with blue handle code - N

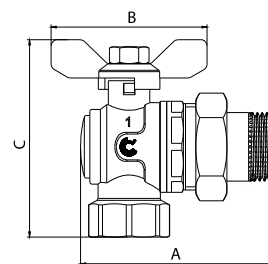
**S30 SERIES**

**ANGLE BALL VALVE F/M WITH HALF UNION**

gland, butterfly lever type

**T max 110°C**

**PN 16 bar**



size	code	dimensions			pcs / pack	pcs / box
		A (mm)	B (mm)	C (mm)		
1/2" x 3/4" x 1/2"	CA/ZK-KWZPM15*	76	54	75	20	40
3/4" x 1" x 3/4"	CA/ZK-KWZPM20*	86	54	84	10	20
1" x 1 1/4" x 1"	CA/ZK-KWZPM25*	91	75	95	6	12

\* version with blue handle code - N

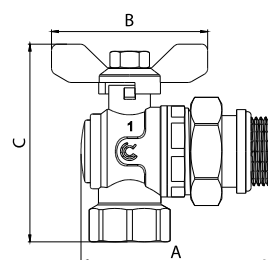
**S30 SERIES**

**ANGLE BALL VALVE F/M WITH HALF UNION AND O-RING**

gland, butterfly lever type

**T max 110°C**

**PN 16 bar**



size	code	dimensions			pcs / pack	pcs / box
		A (mm)	B (mm)	C (mm)		
1/2" x 3/4" x 1/2"	CA/ZK-KWZPM15-O*	75	54	71	16	32
3/4" x 1" x 3/4"	CA/ZK-KWZPM20-O*	81	54	80	9	18
1" x 1 1/4" x 1"	CA/ZK-KWZPM25-O*	93	75	95	6	12

\* version with blue handle code - N

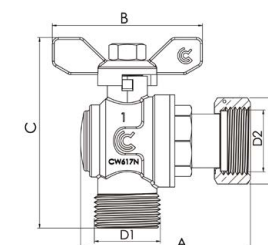
**S30 SERIES**

**ANGLE BALL VALVE M/F WITH MOVEABLE NUT**

gland, butterfly lever type

**T max 110°C**

**PN 30 bar**



size	code	dimensions				pcs / pack	pcs / box
		A (mm)	B (mm)	C (mm)	S1 (mm)		
1/2" x 1/2"	CA/ZK-KZWRNM1515*	66	53,5	71	25	20	40
3/4" x 3/4"	CA/ZK-KZWRNM2020*	75,5	53,5	80	32	10	20
1" x 1"	CA/ZK-KZWRNM2525*	85	75	95	38	6	12

\* version with blue handle code - N

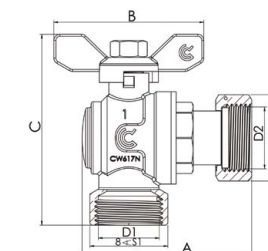
**S30 SERIES**

**ANGLE BALL VALVE F/F WITH MOVEABLE NUT**

gland, butterfly lever type

**T max 110°C**

**PN 30 bar**



size	code	dimensions					pcs / pack	pcs / box
		A (mm)	B (mm)	C (mm)	S1 (mm)	S2 (mm)		
1/2" x 1/2"	CA/ZK-KWWRNM1515*	66	53,5	71	24	25	20	40
3/4" x 3/4"	CA/ZK-KWWRNM2020*	75,5	53,5	80	30	32	10	20
1" x 1"	CA/ZK-KWWRNM2525*	85	75	95	37	38	6	12

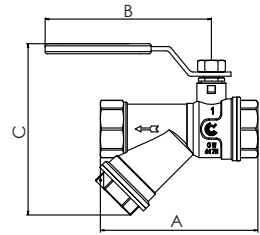
\* version with blue handle code - N

**S30 SERIES**

**BALL VALVE F/F WITH FILTER AND MAGNETIC INSERT**

gland, lever

**Working temp.** -20°C÷150°C  
**PN 30 bar**



size	code	dimensions			pcs / pack	pcs / box
		A (mm)	B (mm)	C (mm)		
1/2"	CA/ZK-WWFR15-OK*	78	91	94	12	24
3/4"	CA/ZK-WWFR20-OK*	96	102	94	9	18
1"	CA/ZK-WWFR25-OK*	108	120	119	5	10
1/2"	CA/ZK-WWFMR15-OK**	81	94	89	12	24
3/4"	CA/ZK-WWFMR20-OK**	98	94	100	9	18
1"	CA/ZK-WWFMR25-OK**	110	114	116	5	10

\* version with blue handle code - N

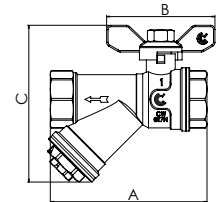
\*\* available in a version with a filter, magnetic insert and lever with a window (version with a blue lever code-N)

**S30 SERIES**

**BALL VALVE F/F WITH FILTER**

gland, butterfly lever type

**Working temp.** -20°C÷150°C  
**PN 30 bar**



size	code	dimensions			pcs / pack	pcs / box
		A (mm)	B (mm)	C (mm)		
1/2"	CA/ZK-WWFM15-OK*	78	54	81	12	24
3/4"	CA/ZK-WWFM20-OK*	96	54	93	9	18
1"	CA/ZK-WWFM25-OK*	108	75	110	6	12

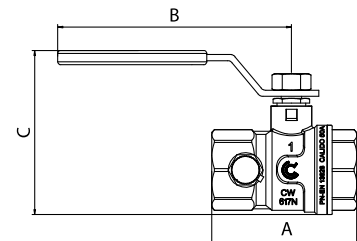
\* version with blue handle code - N

**S30 SERIES**

**BALL VALVE F/F WITH DRAIN AND VENT**

gland, lever

**Working temp.** -20°C÷150°C  
**PN 30 bar**



size	code	dimensions			pcs / pack	pcs / box
		A (mm)	B (mm)	C (mm)		
1/2"	CA/ZK-WWSOR15-OK**	56	94	63	15	30
3/4"	CA/ZK-WWSOR20-OK**	65	94	70	12	24
1"	CA/ZK-WWSOR25-OK*	71	114	81	8	16

\* version with blue handle code - N

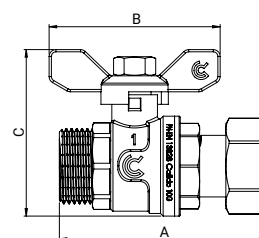
\*\*available in a version with a lever with a window (version with blue lever code -N)

**S30 SERIES**

**BALL VALVE M/F WITH MOVEABLE NUT**

gland, butterfly lever type

**Working temp.** -20°C÷150°C  
**PN** 30 bar



size	code	dimensions			pcs / pack	pcs / box
		A (mm)	B (mm)	C (mm)		
1/2"	CA/ZK-WZRN15*	72	54	54	30	60
1/2 x 3/4"	CA/ZK-WZRN1520*	74	54	54	25	50
3/4"	CA/ZK-WZRN20*	79	75	75	20	40
3/4" x 1"	CA/ZK-WZRN2025*	84	53	53	20	40
1"	CA/ZK-WZRN25*	73	53	53	12	24
1 1/4"	CA/ZK-WZRN32*	83	75	111	6	12

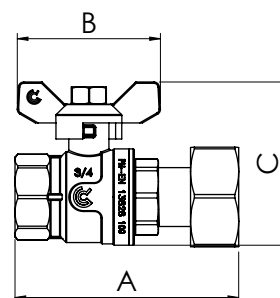
\* version with blue handle code - N

**S30 SERIES**

**BALL VALVE F/F WITH MOVEABLE NUT**

gland, butterfly lever type

**Working temp.** -20°C÷150°C  
**PN** 30 bar



size	code	dimensions			pcs / pack	pcs / box
		A (mm)	B (mm)	C (mm)		
1/2"	CA/ZK-WWRN15*	72	53	53	30	60
1/2 x 3/4"	CA/ZK-WWRN1520*	74	53	53	25	50
3/4"	CA/ZK-WWRN20*	79	53	61	20	40
3/4" x 1"	CA/ZK-WWRN2025*	84	53	61	20	40
1"	CA/ZK-WWRN25*	73	75	90	12	24
1 1/4"	CA/ZK-WWRN32*	83	75	109	6	12

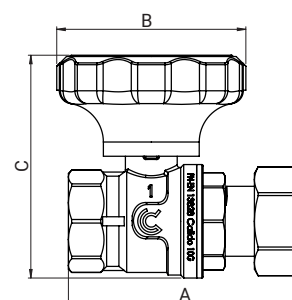
\* version with blue handle code - N

**S30 SERIES**

**BALL VALVE F/F WITH MOVEABLE NUT 1"**

with red or blue knob and thermometer, gland

**Working temp.** -20°C÷150°C  
**PN** 30 bar



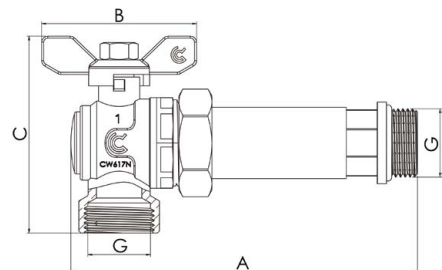
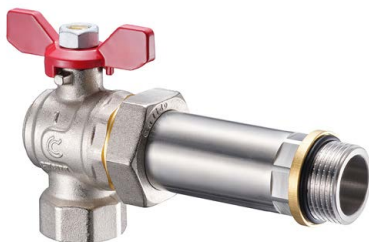
size	code	dimensions			pcs / pack	pcs / box
		A (mm)	B (mm)	C (mm)		
1"	CA/ZK-WWRNT25-CZ	90	73	88	8	16
1"	CA/ZK-WWRNT25-N	90	73	88	8	16

**S30 SERIES**

**ANGLE BALL VALVE F/M**

with half union, o-ring and red butterfly lever type to the upper manifold's beam

**Working temp.** 150°C  
**PN** 30 bar



size	code	dimensions				pcs / pack	pcs / box
		A (mm)	B (mm)	C (mm)	G		
1"	CA/ZK-KWZPMR-25-C	168	75	95	1"	3	6

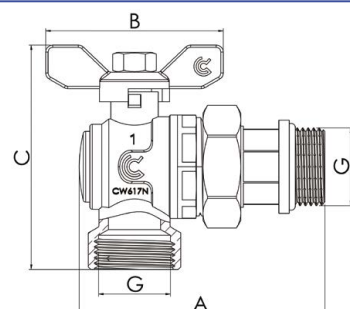
\* Possibility of purchase as a set with a valve for the lower manifold's beam

**S30 SERIES**

**ANGLE BALL VALVE F/M**

with half union, o-ring and blue butterfly lever type to the lower manifold's beam

**Working temp.** 150°C  
**PN** 30 bar



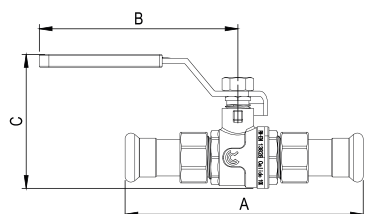
size	code	dimensions				pcs / pack	pcs / box
		A (mm)	B (mm)	C (mm)	G		
1"	CA/ZK-KWZPMR-25-N	104	75	95	1"	3	6

\* Possibility of purchase as a set with a valve for the upper manifold's beam

**S30 PRO SERIES**

**PRESS-FIT BALL VALVE M PROFILE**

lever with a window  
**Working temp.** -20°C÷150°C  
**PN** 16 bar

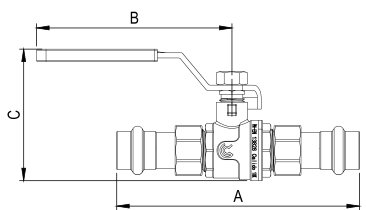


size	code	dimensions			pcs / pack	pcs / box
		A (mm)	B (mm)	C (mm)		
15	CA/ZK-ZZMR15	113	94	63	10	100
18	CA/ZK-ZZMR18	127	94	71	10	100
22	CA/ZK-ZZMR22	142	114	81	8	64
28	CA/ZK-ZZMR28	153	114	81	4	40
35	CA/ZK-ZZMR35	186	114	91	4	24

**S30 PRO SERIES**

**PRESS-FIT BALL VALVE V PROFILE**

lever with a window  
**Working temp.** -20°C÷150°C  
**PN** 16 bar



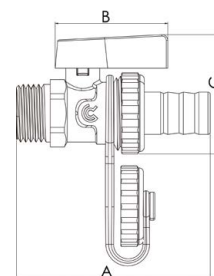
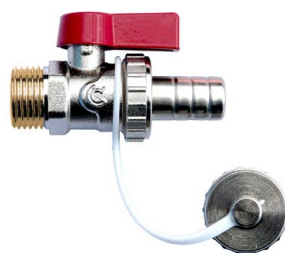
size	code	dimensions			pcs / pack	pcs / box
		A (mm)	B (mm)	C (mm)		
15	CA/ZK-ZZVR15	113	94	63	10	100
18	CA/ZK-ZZVR18	127	94	71	10	100
22	CA/ZK-ZZVR22	142	114	81	8	64
28	CA/ZK-ZZVR28	153	114	81	4	40
35	CA/ZK-ZZVR35	186	114	91	4	24

DRAIN BALL VALVES S30

DRAIN VALVE M

with cap and hose connector,  
stem sealing with 2 o-rings

**T max** 110°C  
**PN** 25 bar

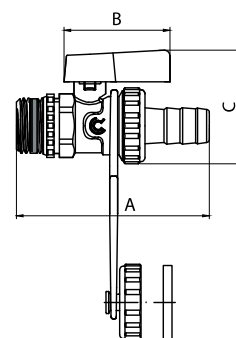


size	code	dimensions			pcs / pack	pcs / box
		A (mm)	B (mm)	C (mm)		
1/2"	CA/ZKS-1/2	68	40	43	35	70
3/4"	CA/ZKS-3/4	74	40	43	20	40

DRAIN VALVE M

with sealing ring, locking nut, cap  
and hose connector, stem sealing  
with 2 o-rings

**T max** 110°C  
**PN** 25 bar

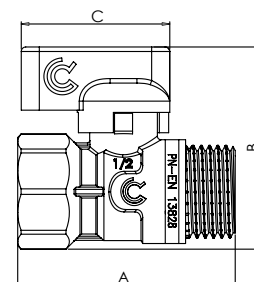
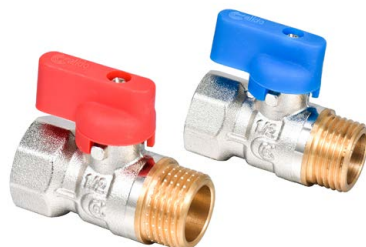


size	code	dimensions			pcs / pack	pcs / box
		A (mm)	B (mm)	C (mm)		
1/2"	CA/ZKS-PN1/2	72	40	43	30	60

BALL VALVES MINI S30

MINI VALVE F/M

gland  
**Working temp.** 110°C  
**PN** 30 bar



size	code	lever's color	dimensions			pcs / pack	pcs / box
			A (mm)	B (mm)	C (mm)		
1/2"	CA/ZK-MINI15-CZ	RED	48	45	33	70	140
1/2"	CA/ZK-MINI15-N	BLUE	48	45	33	70	140

BALL VALVES MINI FOR PEX 16 X 2.0 PIPES

MINI VALVE

gland, extra sealing o-ring

valve:

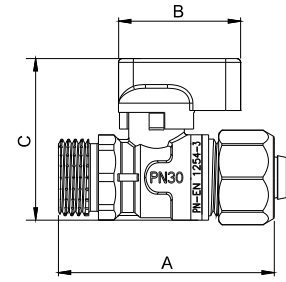
Working temp. 95°C

PN 30 bar

PEX connector:

Working temp. 95°C

PN 10 bar



size	code	lever's color	dimensions			pcs / pack	pcs / box
			A (mm)	B (mm)	C (mm)		
1/2" x 16 x 2,0	CA/ZK-MINI1/2X16CZ	RED	58	33	44	18	144
1/2" x 16 x 2,0	CA/ZK-MINI1/2X16N	BLUE	58	33	44	18	144

BALL VALVES S30 N

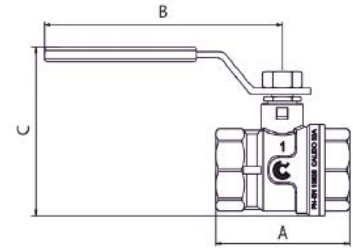
S30 N SERIES

BALL VALVE F/F

gland, lever with a window

Working temp. -20°C÷150°C

PN 30 bar



size	code	dimensions			pcs / pack	pcs / box
		A (mm)	B (mm)	C (mm)		
3/8"	CA/ZKN-WWR10*	41	70	49	60	120
1/2"	CA/ZKN-WWR15*	49	94	63	30	60
3/4"	CA/ZKN-WWR20*	56	94	70	20	40
1"	CA/ZKN-WWR25*	64	114	81	12	24
1 1/4"	CA/ZKN-WWR32*	76	114	91	10	20
1 1/2"	CA/ZKN-WWR40*	87	154	104	6	12
2"	CA/ZKN-WWR50*	102	154	118	4	8

\* available with a red or blue lever (-N)

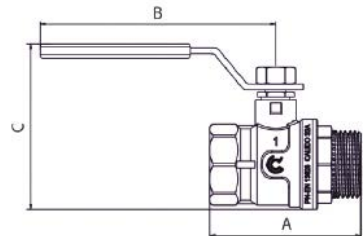
S30 N SERIES

BALL VALVE F/M

gland, lever with a window

Working temp. -20°C÷150°C

PN 30 bar



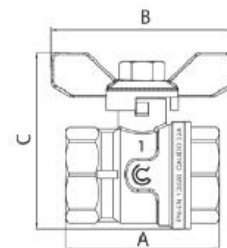
size	code	dimensions			pcs / pack	pcs / box
		A (mm)	B (mm)	C (mm)		
1/2"	CA/ZKN-WZR15*	56	94	63	30	60
3/4"	CA/ZKN-WZR20*	64	94	70	20	40
1"	CA/ZKN-WZR25*	73	114	81	12	24
1 1/4"	CA/ZKN-WZR32*	85	114	90	10	20
1 1/2"	CA/ZKN-WZR40*	98	154	104	6	12
2"	CA/ZKN-WZR50*	119	154	118	2	4

\* available with a red or blue lever (-N)

**S30 N SERIES**

**BALL VALVE F/F**

gland, butterfly lever type  
**Working temp.** -20°C÷150°C  
**PN 30 bar**



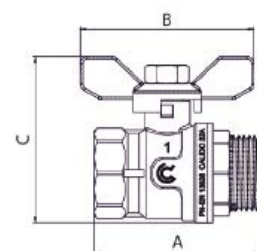
size	code	dimensions			pcs / pack	pcs / box
		A (mm)	B (mm)	C (mm)		
3/8"	CA/ZKN-WWM10*	41	54	46	60	120
1/2"	CA/ZKN-WWM15*	49	54	54	40	80
3/4"	CA/ZKN-WWM20*	56	54	61	25	50
1"	CA/ZKN-WWM25*	64	75	73	14	28

\* available with a red or blue butterfly lever type

**S30 N SERIES**

**BALL VALVE F/M**

gland, butterfly lever type  
**Working temp.** -20°C÷150°C  
**PN 30 bar**



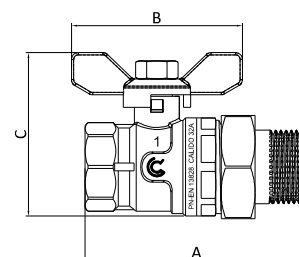
size	code	dimensions			pcs / pack	pcs / box
		A (mm)	B (mm)	C (mm)		
1/2"	CA/ZKN-WZM15*	56	54	54	40	80
3/4"	CA/ZKN-WZM20*	64	54	61	25	50
1"	CA/ZKN-WZM25*	73	75	73	14	28

\* available with a red or blue butterfly lever type

**S30 N SERIES**

**BALL VALVE F/M STRAIGHT WITH HALF UNION**

gland, butterfly lever type  
**T max 110°C**  
**PN 30 bar**



size	code	dimensions			pcs / pack	pcs / box
		A (mm)	B (mm)	C (mm)		
1/2" x 3/4" x 1/2"	CA/ZKN-WZPM15*	78	54	56	25	50
3/4" x 1" x 3/4"	CA/ZKN-WZPM20*	87	54	64	20	40
1" x 1 1/4" x 1"	CA/ZKN-WZPM25*	99	75	77	10	20

\* available with a red or blue butterfly-type lever

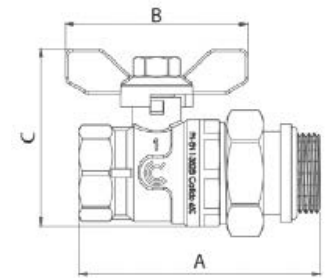
**S30 N SERIES**

**BALL VALVE F/M STRAIGHT WITH HALF UNION AND O-RING**

gland, butterfly lever type

**T max 110°C**

**PN 30 bar**



size	code	dimensions			pcs / pack	pcs / box
		A (mm)	B (mm)	C (mm)		
1/2" x 3/4" x 1/2"	CA/ZKN-WZPM15-O*	81	54	56	20	40
3/4" x 1" x 3/4"	CA/ZKN-WZPM20-O*	86	54	61	20	40
1" x 1 1/4" x 1"	CA/ZKN-WZPM25-O*	102	75	72	8	16
1 1/4" x 1 1/2" x 1 1/4"	CA/ZKN-WZPM32-O*	114	75	82	6	12

\* available with a red or blue butterfly lever type

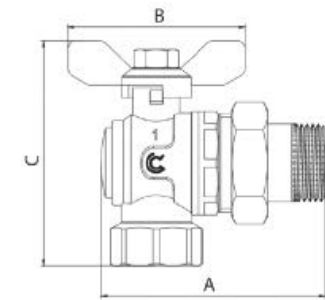
**S30 N SERIES**

**ANGLE BALL VALVE F/M WITH HALF UNION**

gland, butterfly lever type

**T max 110°C**

**PN 16 bar**



size	code	dimensions			pcs / pack	pcs / box
		A (mm)	B (mm)	C (mm)		
1/2" x 3/4" x 1/2"	CA/ZKN-KWZPM15*	76	54	75	20	40
3/4" x 1" x 3/4"	CA/ZKN-KWZPM20*	86	54	84	10	20
1" x 1 1/4" x 1"	CA/ZKN-KWZPM25*	91	75	95	6	12

\* available with a red or blue butterfly lever type

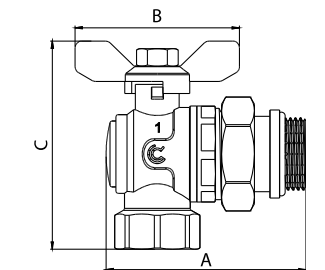
**S30 N SERIES**

**ANGLE BALL VALVE F/M WITH HALF UNION AND O-RING**

gland, butterfly lever type

**T max 110°C**

**PN 16 bar**



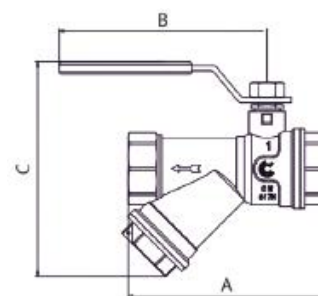
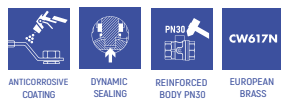
size	code	dimensions			pcs / pack	pcs / box
		A (mm)	B (mm)	C (mm)		
1/2" x 3/4" x 1/2"	CA/ZKN-KWZPM15-O*	75	54	71	16	32
3/4" x 1" x 3/4"	CA/ZKN-KWZPM20-O*	81	54	80	6	12
1" x 1 1/4" x 1"	CA/ZKN-KWZPM25-O*	93	75	95	6	12

\* available with a red or blue butterfly lever type

S30 N SERIES

**BALL VALVE F/F WITH FILTER**

gland, lever with a window  
**Working temp.** -20°C÷150°C  
**PN 30 bar**



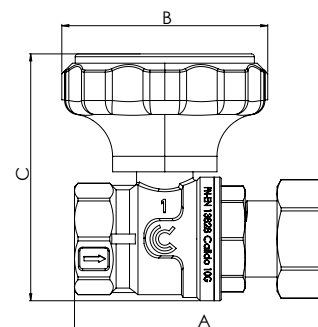
size	code	dimensions			pcs / pack	pcs / box
		A (mm)	B (mm)	C (mm)		
1/2"	CA/ZKN-WWFR15*	78	91	94	12	24
3/4"	CA/ZKN-WWFR20*	96	102	94	9	18
1"	CA/ZKN-WWFR25*	108	120	119	5	10

\* available with a red or blue lever (-N)

S30 N SERIES

**BALL VALVE F/F WITH MOVEABLE NUT 1"**

with red or blue knob and thermometer, gland  
**Working temp.** -20°C÷150°C  
**PN 30 bar**

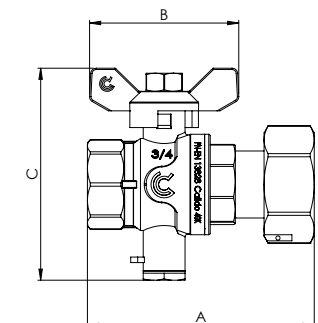


size	code	dimensions			pcs / pack	pcs / box
		A (mm)	B (mm)	C (mm)		
1"	CA/ZKN-WWRNT25-CZ	90	73	88	8	16
1"	CA/ZKN-WWRNT25-N	90	73	88	8	12

S30 N SERIES

**BALL VALVE F/F WITH TEMPERATURE SENSOR POCKET**

with red butterfly lever type  
**Working temp.** -20°C÷150°C  
**PN 30 bar**



size	code	dimensions			pcs / pack	pcs / box
		A (mm)	B (mm)	C (mm)		
1/2" x 3/4"	CA/ZKN-WWRNMC15X20	74,3	53,5	75	16	32
3/4" x 1"	CA/ZKN-WWRNMC20X25	81,5	53,5	76	14	28

\* Sensor connection thread M10x1. Standard sensor length 26 mm.

GARDEN BALL VALVES

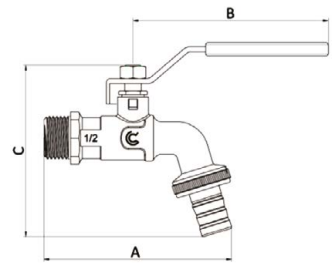
GARDEN SERIES

FROST-RESISTANT BALL VALVE

hose connector, gland

T max 90°C

PN 30 bar



size	code	dimensions			pcs / pack	pcs / box
		A (mm)	B (mm)	C (mm)		
1/2" x 3/4" x 15	CA/ZK-CZ1/2	92	94	95	16	32
3/4" x 3/4" x 20	CA/ZK-CZ3/4	100	94	99	10	20

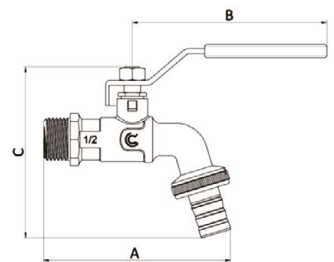
GARDEN SERIES

FROST-RESISTANT BALL VALVE

quick-coupling connector, gland

T max 90°C

PN 30 bar



size	code	dimensions			pcs / pack	pcs / box
		A (mm)	B (mm)	C (mm)		
1/2" x 3/4" - SZ	CA/ZK-CZ15S	94	94	95	16	32
3/4" x 3/4" - SZ	CA/ZK-CZ20S	102	94	99	10	20

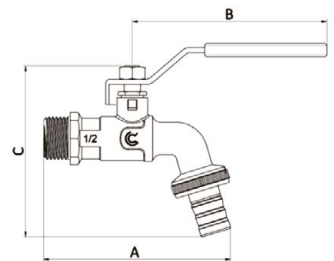
GARDEN SERIES

FROST-RESISTANT BALL VALVE

hose connector and quick-coupling connector, gland

T max 90°C

PN 30 bar



size	code	dimensions			pcs / pack	pcs / box
		A (mm)	B (mm)	C (mm)		
1/2" x 3/4" - 15/SZ	CA/ZK-CZZWS15	94	94	95	12	24
3/4" x 3/4" - 20/SZ	CA/ZK-CZZWS20	102	94	99	10	20

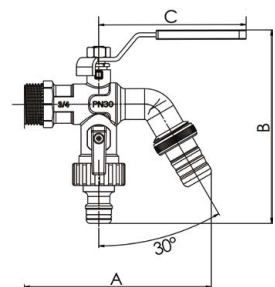
GARDEN SERIES BIS

FROST-RESISTANT BALL VALVE WITH TWO CONNECTORS

hose connector and quick-coupling connector, gland

T max 90°C

PN 30 bar



size	code	dimensions			pcs / pack	pcs / box
		A (mm)	B (mm)	C (mm)		
1/2" x 3/4"	CA/ZK-CZ1/2 BIS	94	94	95	-	32
3/4" x 3/4"	CA/ZK-CZ3/4BIS	102	94	99	-	28

FARMER BALL VALVES

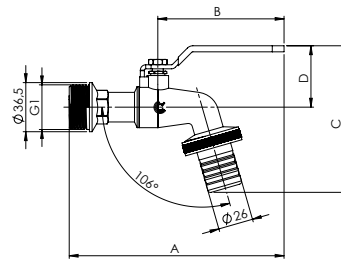
FARMER SERIES

BALL VALVE

gland, hose connector

T max 90°C

PN 25 bar



size	code	dimensions			pcs / pack	pcs / box
		A (mm)	B (mm)	C (mm)		
1" x 1 1/4" - 26	CA/ZK-CZF25	160	94	109	6	12

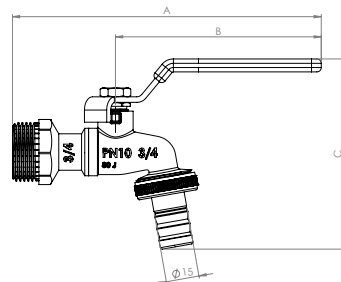
FARMER SERIES

BALL VALVE

gland, hose connector

T max 90°C

PN 10 bar



size	code	dimensions			pcs / pack	pcs / box
		A (mm)	B (mm)	C (mm)		
1/2" x 3/4" x 15	CA/ZK-CZF15	140	93	86	20	40
3/4" x 3/4" x 15	CA/ZK-CZF20	140	93	86	16	32

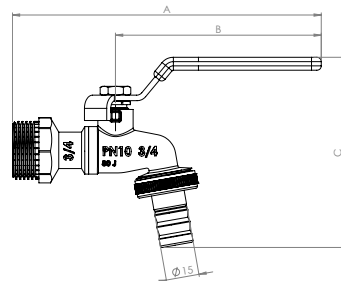
FARMER SERIES

BALL VALVE

quick-coupling connector, gland

T max 90°C

PN 10 bar



size	code	dimensions			pcs / pack	pcs / box
		A (mm)	B (mm)	C (mm)		
1/2" x 3/4" x SZ	CA/ZK-CZFS15	140	93	86	18	36
3/4" x 3/4" x SZ	CA/ZK-CZFS20	140	93	86	16	32

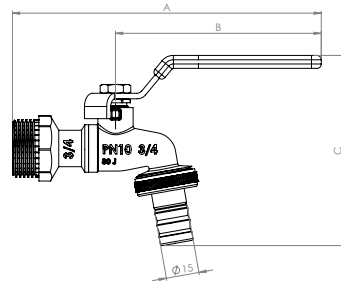
FARMER SERIES

BALL VALVE

hose connector and quick-coupling connector, gland

T max 90°C

PN 10 bar



size	code	dimensions			pcs / pack	pcs / box
		A (mm)	B (mm)	C (mm)		
1/2" x 3/4" x 15/SZ	CA/ZK-CZFW15	140	93	86	14	28
3/4" x 3/4" x 15/SZ	CA/ZK-CZFW20	140	93	86	14	28

PLUGS WITH BALL VALVES

55/60 CONTAINER PLUG

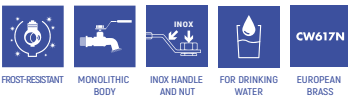
with CALIDO ball valve FARMER SERIES  
**T max 65°C**  
**PN 10 bar**



size	code	pcs / pack	pcs / box
3/4"	CA/ZK-KOREK CZF20	1	56

55/60 CONTAINER PLUG

with CALIDO ball valve GARDEN SERIES  
**T max 90°C**  
**PN 30 bar**



size	code	pcs / pack	pcs / box
3/4"	CA/ZK-KOREK CZ3/4	1	56

55/60 CONTAINER PLUG

with CALIDO ball valve S30 SERIES  
 and quick connector  
**T max 90°C**  
**PN 30 bar**



size	code	pcs / pack	pcs / box
3/4"	CA/ZK-KOREK WZR3/4	1	56

55/60 CONTAINER PLUG

with CALIDO ball valve FARMER SERIES  
**T max 90°C**  
**PN 25 bar**



size	code	pcs / pack	pcs / box
1"	CA/ZK-KOREK CZF25	1	56

55/60 CONTAINER PLUG

with Calido ball valve 1" F S30 SERIES



size	code	pcs / pack	pcs / box
1"	CA/ZK-KOREK WZR25	1	56

VALVES FOR HEATING

ERYK SERIES

set of angle ball valves for connection of hanging boiler

- 1 x CA/ZKKN-DPK 15
- 1 x CA/ZKKN-DPKF 15
- 1 x CA/ZKKN-DPK 20
- 1 x CA/ZKKN-DPKF 20

PN 10 bar  
**T nom** 110°C  
**T max temporary** 150°C (for valves without a check valve)  
**T max temporary** 120°C (for valves with a check valve)



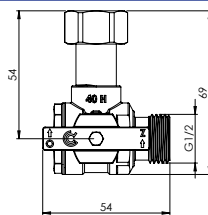
size	code	pcs / pack	pcs / box
1 x 1/2"	CA/ZKKN-DPKN KPL	1 set	12
1 x 1/2" *			
1 x 3/4"			
1 x 3/4" *			

\* with a check valve and anti-lime filter

ERYK SERIES

angle ball valve for connection of hanging boiler

PN 10 bar  
**T nom** 110°C  
**T max temporary** 150°C

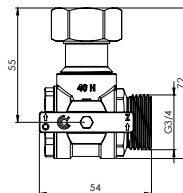


size	code	pcs / pack	pcs / box
1/2"	CA/ZKKN-DPK 15	-	48

ERYK SERIES

angle ball valve for connection of hanging boiler

PN 10 bar  
**T nom** 110°C  
**T max temporary** 150°C

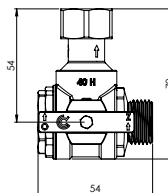


size	code	pcs / pack	pcs / box
3/4"	CA/ZKKN-DPK 20	-	45

ERYK SERIES

angle ball valve for connection of hanging boiler with anti-lime filter and a check valve

PN 10 bar  
**T nom** 110°C  
**T max temporary** 120°C

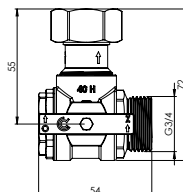


size	code	pcs / pack	pcs / box
1/2"	CA/ZKKN-DPKF 15	-	48

ERYK SERIES

angle ball valve for connection of hanging boiler with anti-lime filter and a check valve

PN 10 bar  
**T nom** 110°C  
**T max temporary** 120°C



size	code	pcs / pack	pcs / box
3/4"	CA/ZKKN-DPKF 20	-	45

**THREE-WAY VALVE**

thermostatic, mixing three-way valve for Central Heating system

PN 10 bar

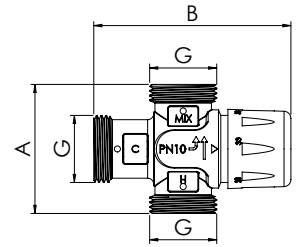
T nom 90°C

T max temporary 110°C

Temperature control range 23-43°C

Control accuracy 2°C

Max glycol concentration in the medium 50%



size	Flow rate Kv (m³/h)	code	dimensions			pcs / pack	pcs / box
			G	A (mm)	B (mm)		
1" x 1" x 1"	1,6	CA/ZTM-1,6	1"	70	95	1	30
1" x 1" x 1"	3,2	CA/ZTM-3,2	1"	70	95	1	20
1" x 1" x 1"	4,8	CA/ZTM-4,8	1"	84	122,5	1	20

**WATER PRESSURE REDUCER**

T max 80°C

Setting range 1,5-5,5 bar

Factory setting 3 bar

Brass CW617N



size	code	pcs / pack	pcs / box
1/2"	CA/RCW-15	1	12
3/4"	CA/RCW-20	1	12
1"	CA/RCW-25	1	12

**ANGLED WATER PRESSURE REDUCER**

PN 25 bar

T max 80°C

Setting range 1-6 bar

Maximum input pressure 16 bar

Manometer connection 1/4"



size	code	Kv for 3 bar setting	pcs / pack	pcs / box
1/2"	CA/RCWS-15	2,7 m³/h	1	12
3/4"	CA/RCWS-20	2,8 m³/h	1	12
1"	CA/RCWS-25	4,4 m³/h	1	8

**PUMP BYPASSES**

**VERTICAL**



type	description	code	pcs / box
with differential valve 1"	the set includes: two 1 1/2"x1" half unions and Calido S30 Series ball valves	CA/OB-1	1
with differential valve 1 1/4"		CA/OB-11/4	1
with differential valve 1 1/2"		CA/OB-11/2	1
with differential valve 2"		CA/OB-2	1

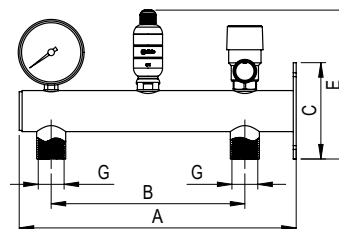
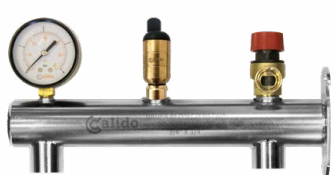
**HORIZONTAL**



type	description	code	pcs / box
with differential valve 1"	the set includes: two 1 1/2"x1" half unions and Calido S30 Series ball valves	CA/OB-1 POZ	1
with differential valve 1 1/4"		CA/OB-11/4 POZ	1
with differential valve 1 1/2"		CA/OB-11/2 POZ	1
with differential valve 2"		CA/OB-2 POZ	1

**SAFETY GROUPS**

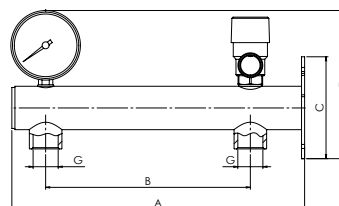
**FOR CENTRAL HEATING SYSTEM**



type	description	code	A (mm)	B (mm)	C (mm)	G	E (mm)	pcs / box
with 1,5 bar safety valve	length 286 mm, manometer 4 bar, T max 110 °C	CA/GB-CO-1,5	286	200	99,5	3/4"	155	1
with 2,5 bar safety valve		CA/GB-CO-2,5						1
with 3 bar safety valve		CA/GB-CO-3						1
with 1,5 bar safety valve		CA/GB-CO-1,5-SN*						1
with 2,5 bar safety valve		CA/GB-CO-2,5-SN*						1
with 3 bar safety valve		CA/GB-CO-3,0-SN*						1

\* stainless steel

**FOR DOMESTIC HOT WATER INSTALLATION**



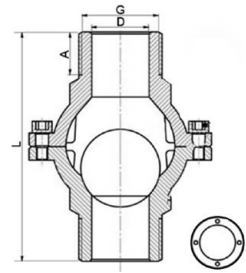
type	description	code	dimensions					pcs/box
			A (mm)	B (mm)	C (mm)	G	E (mm)	
with safety valve 6 bar	length 286 mm, manometer 10 bar, T max 110°C	CA/GB-CWU-6	286	200	99,5	3/4"	145	1
with safety valve 8 bar		CA/GB-CWU-8						1
with safety valve 6 bar		CA/GB-CWU-6-SN*						1
with safety valve 8 bar		CA/GB-CWU-8-SN*						1

\* stainless steel

DIFFERENTIAL VALVES

DIFFERENTIAL VALVE

**Operating temperature** 0-90°C  
**Temporary operating temperature** 110°C  
**PN** 6 bar  
 valve opening pressure  
 for gravity circulation systems  
 0,00-0,001 bar



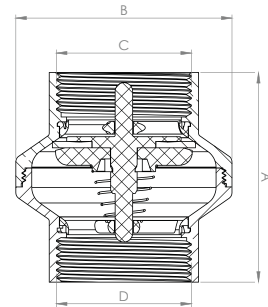
size	code	dimensions				pcs / pack	pcs / box
		D(Ø)	G	L (mm)	A (mm)		
1"	CA/ZR-ZR1	25	1"	110	19	1	24
1 1/4"	CA/ZR-ZR11/4	32	1 1/4"	118	22	1	18
1 1/2"	CA/ZR-ZR11/2	40	1 1/2"	138	24,5	1	16
2"	CA/ZR-ZR2	50	2"	144,5	25	1	12

CHECK VALVES

PIONIER SERIES

**ENERGY SAVING CHECK VALVE F/F, FULL FLOW**

Anti-lime, plastic head, valve spring made of stainless steel, tested for 1 000 000 open-close cycles  
**Working temp.** -20°C without freezing ÷ 90°C  
**PN** 25 bar

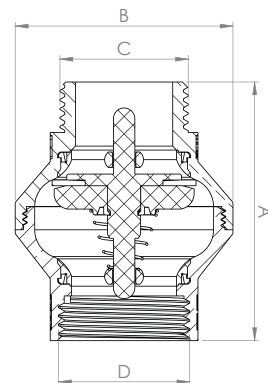


size	code	Kv(m³/h)	dimensions				pcs / pack	pcs / box
			A (mm)	B (mm)	C	D		
1/2"	CA/ZZPP-15	4,5	49	38	1/2" F/F	1/2" F/F	20	120
3/4"	CA/ZZPP-20	10	56	48	3/4" F/F	3/4" F/F	12	72
1"	CA/ZZPP-25	15,5	60	56	1" F/F	1" F/F	9	54
1 1/4"	CA/ZZPP-32	23,3	66	68	1 1/4" F/F	1 1/4" F/F	10	20
1 1/2"	CA/ZZPP-40	33,7	72,5	76	1 1/2" F/F	1 1/2" F/F	8	16
2"	CA/ZZPP-50	49,3	80	95	2" F/F	2" F/F	4	8

PIONIER SERIES

**ENERGY SAVING CHECK VALVE M/F, FULL FLOW**

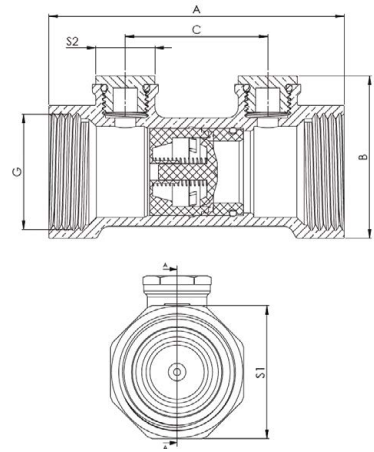
Anti-lime, plastic head, valve spring made of stainless steel, tested for 1 000 000 open-close cycles  
**Working temp.** -20°C without freezing ÷ 90°C  
**PN** 25 bar



size	code	Kv(m³/h)	dimensions				pcs / pack	pcs / box
			A (mm)	B (mm)	C	D		
1"	CA/ZZP-WZ-25	15,5	67	56	1" M	1" F	15	30

**ANTI-CONTAMINATION VALVE F/F**

T max 95°C  
PN max 10 bar



size	code	dimensions					pcs / pack	pcs / box
		A (mm)	B (mm)	C (mm)	S1 (mm)	S2 (mm)		
1/2"	CA/ZA-15	63	35,5	27	26	17	1	120
3/4"	CA/ZA-20	71	40	35	32	17	1	100
1"	CA/ZA-25	85	46,5	41	38	17	1	60
1 1/4"	CA/ZA-32	97	55	47	47	17	1	40
1 1/2"	CA/ZA-40	110	63	56	55	17	1	30
2"	CA/ZA-50	125	76,5	67	70	17	1	15

**THERMOSTATIC VALVE FOR DOMESTIC HOT WATER CIRCULATION**

**Product use:**

- commercial buildings
- multi-family buildings
- institutional buildings

**Medium:** water intended for human consumption

**Max working pressure** 1 MPa (10 bar)

**Temperature setting range** 35°C - 60°C

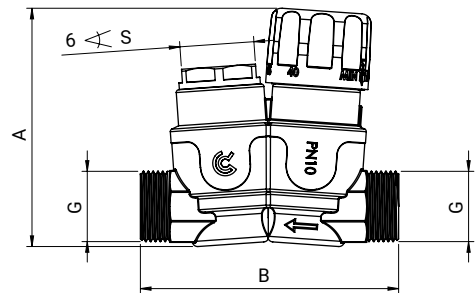
**Disinfection temperature** 68°C - 72°C

**Valve closing temperature** 75°C

**Max temperature** 90°C

**Kv** = 2,3 m<sup>3</sup>/h

**Connection** 3/4" M (for flat gasket)



size	code	dimensions			pcs / pack	pcs / box
		A (mm)	B (mm)	S (mm)		
3/4"	CA/ZTC-CWU-20	89,5	97	28	1	24

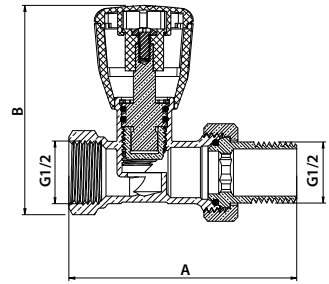
MANUAL RADIATOR VALVES

O-RINGS CAN BE CHANGED WITHOUT DRAINING THE WATER FROM THE INSTALLATION

ESKIMOS SERIES

STRAIGHT RADIATOR SUPPLY VALVE  
Nickel

T max 110°C  
PN 16 bar



size	code	A (mm)	B (mm)
1/2"	CA/ZG-ZP1/2	77	71
1/2"	CA/ZG-ZP1/2-O*	77	71

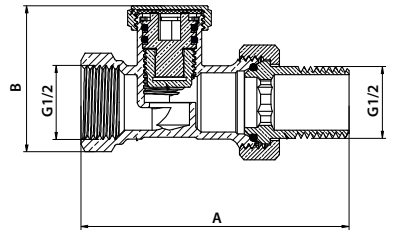
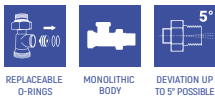
pcs / pack	pcs / box
10	40
9	36

\* version with o-ring

ESKIMOS SERIES

RETURN STRAIGHT VALVE  
Nickel

T max 110°C  
PN 16 bar



size	code	A (mm)	B (mm)
1/2"	CA/ZG-PP1/2	77	42
1/2"	CA/ZG-PP1/2-O*	77	42

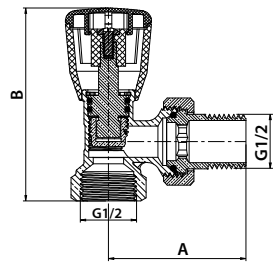
pcs / pack	pcs / box
10	60
9	54

\* version with o-ring

ESKIMOS SERIES

ANGLED RADIATOR SUPPLY VALVE  
Nickel

T max 110°C  
PN 16 bar



size	code	A (mm)	B (mm)
1/2"	CA/ZG-ZK1/2	52	73
1/2"	CA/ZG-ZK1/2-O*	52	73

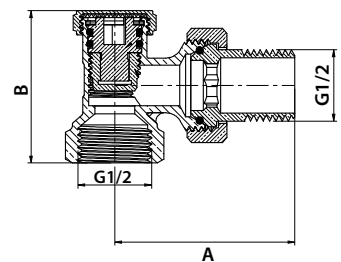
pcs / pack	pcs / box
10	40
8	32

\* version with o-ring

ESKIMOS SERIES

ANGLED RADIATOR RETURN VALVE  
Nickel

T max 110°C  
PN 16 bar



size	code	A (mm)	B (mm)
1/2"	CA/ZG-PK1/2	52	44
1/2"	CA/ZG-PK1/2-O*	52	44

pcs / pack	pcs / box
16	64
16	64

\* version with o-ring

RADIATOR VALVES WITH COMPRESSION FITTING FOR PE 16X2.0 AND CU 15 MM PIPES

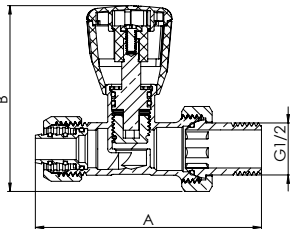
O-RINGS CAN BE CHANGED WITHOUT DRAINING THE WATER FROM THE INSTALLATION

ESKIMOS SERIES

STRAIGHT RADIATOR SUPPLY VALVE

Nickel

valve **T max 95°C, PN 16 bar**  
connector **T max 95°C, PN 10 bar**



size	code	A (mm)	B (mm)
1/2" x 16 x 2,0	CA/ZG-ZPPEX1/2X16	89	73
1/2" x 15	CA/ZG-ZPCU1/2X15*	86	73

pcs / pack	pcs / box
9	36
9	36

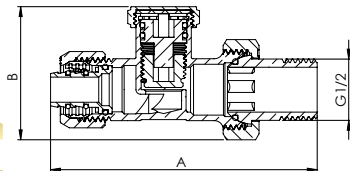
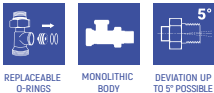
\* version with press-fit connection for Cu 15mm pipes

ESKIMOS SERIES

RETURN STRAIGHT VALVE

Nickel

valve **T max 95°C, PN 16 bar**  
connector **T max 95°C, PN 10 bar**



size	code	A (mm)	B (mm)
1/2" x 16 x 2,0	CA/ZG-PPPEX1/2X16	89	44
1/2" x 16 x 2,0	CA/ZG-PPPEX-O**	89	43
1/2" x 15	CA/ZG-PPCU1/2X15*	86	44

pcs / pack	pcs / box
9	54
9	54
9	54

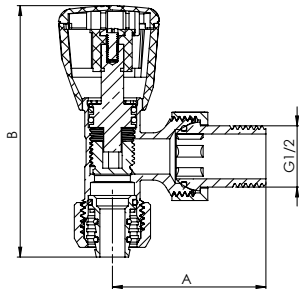
\* version with press-fit connection for Cu 15mm pipes \*\* version with o-ring

ESKIMOS SERIES

ANGLE RADIATOR SUPPLY VALVE

Nickel

valve **T max 95°C, PN 16 bar**  
connector **T max 95°C, PN 10 bar**



size	code	A (mm)	B (mm)
1/2" x 16 x 2,0	CA/ZG-ZKPEX1/2X16	52	84
1/2" x 15	CA/ZG-ZKCU1/2X15*	52	82

pcs / pack	pcs / box
8	32
8	32

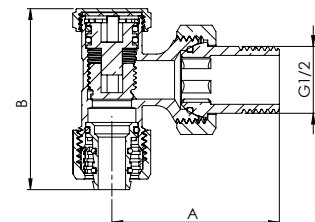
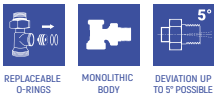
\* version with press-fit connection for Cu 15mm pipes

ESKIMOS SERIES

ANGLE RADIATOR RETURN VALVE

Nickel

valve **T max 95°C, PN 16 bar**  
connector **T max 95°C, PN 10 bar**



size	code	A (mm)	B (mm)
1/2" x 16 x 2,0	CA/ZG-PKPEX1/2X16	52	55
1/2" x 16 x 2,0	CA/ZG-PKPEX-O**	64	55
1/2" x 15	CA/ZG-PKCU1/2X15*	52	53

pcs / pack	pcs / box
14	56
14	56
14	56

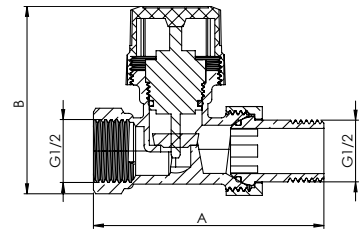
\* version with a press connection for Cu 15MM PIPES \*\* version with o-rings

TERMOSTATIC RADIATOR VALVES WITH PRE-SETTING

ESKIMOS SERIES

STRAIGHT THERMOSTATIC RADIATOR SUPPLY VALVE WITH PRE-SETTING

Nickel  
**T max** 120°C  
**PN** 10 bar  
**head thread** M30 x 1,5



size	code	A (mm)	B (mm)
1/2"	CA/ZGT-ZP-NW	77	62
1/2"	CA/ZGT-ZP-NW-O*	77	62

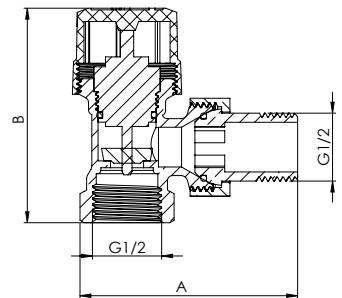
pcs / pack	pcs / box
8	80
8	80

\* version with o-ring

ESKIMOS SERIES

ANGLE THERMOSTATIC RADIATOR SUPPLY VALVE WITH PRE-SETTING

Nickel  
**T max** 120°C  
**PN** 10 bar  
**head thread** M30 x 1,5



size	code	A (mm)	B (mm)
1/2"	CA/ZGT-ZK-NW	66	65
1/2"	CA/ZGT-ZK-NW-O*	66	65

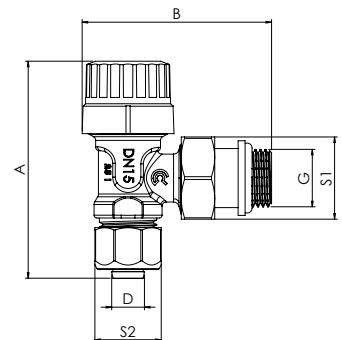
pcs / pack	pcs / box
8	80
8	80

\* version with o-ring

ESKIMOS SERIES

ANGLE THERMOSTATIC RADIATOR SUPPLY VALVE WITH PRE-SETTING, PEX ADAPTOR AND O-RING

Nickel  
**T max** 95°C  
**PN** 10 bar  
**head thread** M30 x 1,5



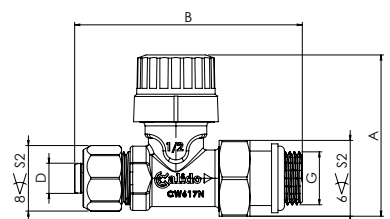
size	code	G	A (mm)	B (mm)	D (mm)	S1 (mm)	S2 (mm)
1/2" x 16 x 2,0	CA/ZGT-ZKPEX-O	1/2"	78	68	11,8	30	24

pcs / pack	pcs / box
10	40

ESKIMOS SERIES

STRAIGHT THERMOSTATIC RADIATOR SUPPLY VALVE WITH PRE-SETTING, PEX ADAPTOR AND O-RING

Nickel  
**T max** 95°C  
**PN** 10 bar  
**head thread** M30 x 1,5



size	code	G	A (mm)	B (mm)	D (mm)	S2 (mm)
1/2" x 16 x 2,0	CA/ZGT-ZPPEX-O	1/2"	63	88,5	11,8	26

pcs / pack	pcs / box
8	32

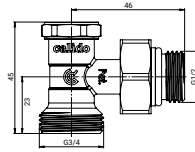
BOTTOM RADIATORS CONNECTORS

O-RINGS CAN BE CHANGED WITHOUT DRAINING THE WATER FROM THE INSTALLATION

ESKIMOS SERIES

ANGLE WITH NIPPLES, WITHOUT BRIDGE  
adjustment with 6 mm Allen key

T max 110°C  
PN 16 bar  
Kv 2,8 m<sup>3</sup>/h

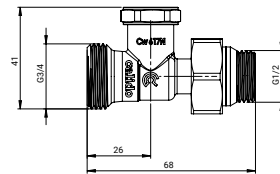


size	code	pcs / pack	pcs / box
3/4" x 1/2"	CA/ZG-PGK1/2	1 set	32

ESKIMOS SERIES

STRAIGHT WITH NIPPLES, WITHOUT BRIDGE  
adjustment with 6 mm Allen key

T max 110°C  
PN 16 bar  
Kv 2,4 m<sup>3</sup>/h

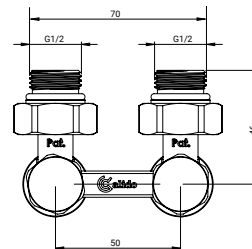


size	code	pcs / pack	pcs / box
3/4" x 1/2"	CA/ZG-PGP1/2	1 set	32

ESKIMOS SERIES

ANGLE WITH NIPPLES AND BRIDGE  
adjustment with 6 mm Allen key

T max 110°C  
PN 10 bar  
Kv 2,11 m<sup>3</sup>/h

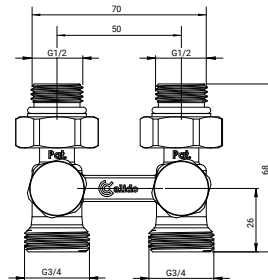


size	code	pcs / pack	pcs / box
3/4" x 1/2"	CA/ZG-PGMK1/2	1	50

ESKIMOS SERIES

STRAIGHT WITH NIPPLES AND BRIDGE  
adjustment with 6 mm Allen key

T max 110°C  
PN 10 bar  
Kv 1,58 m<sup>3</sup>/h



size	code	pcs / pack	pcs / box
3/4" x 1/2"	CA/ZG-PGMP1/2	1	50

CONNECTORS FOR CU PIPES

CONNECTORS FOR COPPER PIPES

T max 95°C  
PN 10 bar



size	code	pcs/pack	pcs/box
15 x 1/2"	CA/ZG-A-PCU15X1/2	1	250

THERMOSTATIC RADIATOR HEADS

BIANCA

THERMOSTATIC HEAD

temperature control range 6-28°C  
working medium: liquid



size	code	pcs / pack	pcs / box
M30 x 1,5	CA/ZG-GT-BIANCA	1	50

THERMOSTATIC SETS

ANGLE SET BIANCA

- BIANCA M30x1,5 thermostatic head (temperature control range 6-28°C)
- thermostatic valve, supply, angled 1/2" with pre-setting
- return valve 1/2"

T max 110°C  
PN 10 bar



code	set	pcs / box
CA/ZGT-ZTK-BIANCA	1	40

**STRAIGHT SET BIANCA**

- BIANCA M30x1,5 thermostatic head (temperature control range 6-28°C)
- thermostatic valve, supply, straight 1/2" with pre-setting
- return valve 1/2"

**T max** 110°C  
**PN** 10 bar



code	set	pcs / box
CA/ZGT-ZTP-BIANCA	1	36

**ANGLE SET WITH PEX ADAPTOR BIANCA**

- BIANCA thermostatic head M30x1,5 (temperature control range 6 - 28°C)
- thermostatic supply angled valve 1/2"
- angled return valve 1/2"
- half-union with o-ring
- connection for PEX pipe 16x2.0 mm

**T max** 95°C  
**PN** 10 bar



code	set	pcs / box
CA/ZGT-ZTKPEX-BIANCA	1	40

**STRAIGHT SET WITH PEX ADAPTOR BIANCA**

- BIANCA thermostatic head M30x1,5 (temperature control range 6 - 28°C)
- thermostatic supply valve 1/2 straight with pre-setting
- return straight valve 1/2"
- half-union with o-ring
- connection for PEX pipe 16x2.0 mm

**T max** 95°C  
**PN** 10 bar



code	set	pcs / box
CA/ZGT-ZTPPEX-BIANCA	1	40

**CORNER THERMOSTATIC SETS BELLA**

- BELLA thermostatic head M30x1,5 thermostatic head (temperature control range 6-28°C)
- corner thermostatic supply valve 1/2" with pre-setting
- corner return valve 1/2"
- connection set for 15 mm copper pipes
- connection set for 16x2 mm PEX pipes

**T max** 95°C  
**PN** 10 bar



Available colors:

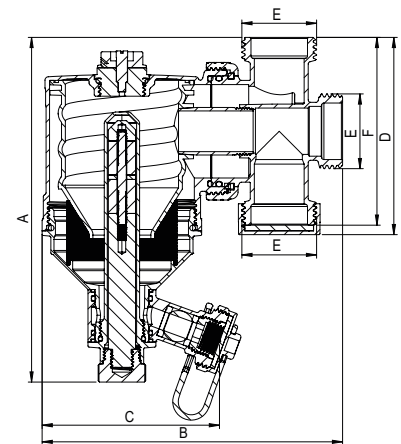


code	set	pcs / box
CA/ZGTN-BELLA-B	1	20
CA/ZGTN-BELLA-CZ	1	20
CA/ZGTN-BELLA-ANTR	1	20
CA/ZGTN-BELLA-CH	1	20

**FILTERS AND SEPARATORS**

**MAGNETIC SEPARATOR WITH FILTER AND SEDIMENTATION VESSEL**

**P max** 10 bar  
**T max** 110°C  
**Magnetic power** 11 000 Gaus  
**Strainer mesh size** 500 µm  
**Magnet type:** neodymium  
**Acceptable liquids:** water and water solution with glycol at the maximum concentration of 40%  
**Maximum heating output of heating system:** 24 kW



size	Flow rate Kv (m³/h)	code	A	B	C	D	E	pcs / pack	pcs / box
3/4"	3,65	CA/FOMN-20	150	131	71	80	3/4"	1	16
1"	5,8	CA/FOMN-25	150	131	71	80	1"	1	16
1 1/4"	16,9	CA/FOMN-32	192	171	87	118	1 1/4"	1	16

**MAGNETIC SEPARATOR FOR HORIZONTAL MOUNTING WITH SPIRAL MESH AND MAGNETIC INSERT**

**P max** 10 bar

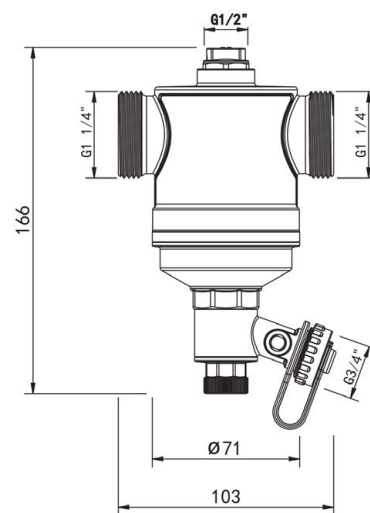
**T max** 110°C

**Magnetic power** 11 000 Gauss

**Magnet type:** neodymium

**Body material:** Brass

**Acceptable liquids:** water and water solution with glycol at the maximum concentration of 40%



size	Flow rate Kv (m³/h)	code	pcs / pack	pcs / box
1 1/4"	25,8	CA/FOMT-32	1	16

**SET: MAGNETIC SEPARATOR FOR HORIZONTAL MOUNTING + S30 VALVES**

The set includes:

- magnetic separator 1 1/4" for horizontal installation with spiral mesh and magnetic insert
- 2 x 1 1/4" Calido S30 ball valve with moveable nut F/M with butterfly lever type
- 2 pcs of seals



code	set
CA-PAKIET-SEPARAT.32	1

**SET: MAGNETIC SEPARATOR WITH FILTER, SEDIMENTATION TANK AND NUT + S30 VALVES**

The set includes:

- magnetic separator 1 1/4 " with sedimentation tank and magnetic insert
- 2 x 1 1/4 " Calido S30 F/M valves with moveable nut and butterfly lever type
- 2 pcs of seals



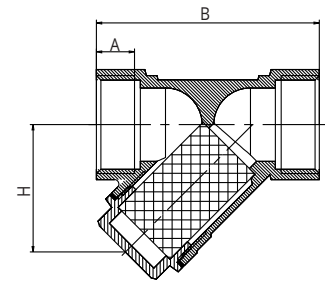
code	set
CA-PAKIET-FOMN32	1

**ANGLE FILTER**

**Filter mesh:** 40 holes /cm<sup>2</sup>

**T max** 130°C

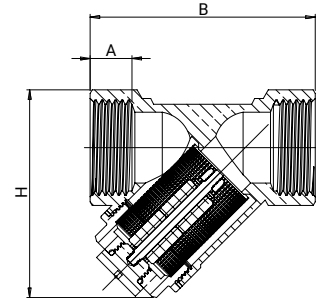
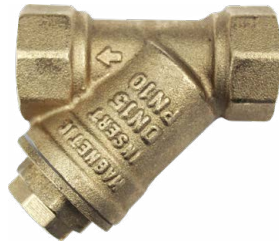
**PN** 16 bar



size	code	dimensions			pcs / pack	pcs / box
		A (mm)	B (mm)	H (mm)		
1/2"	CA/FSW-1/2	12	57	30	16	160
3/4"	CA/FSW-3/4	13	67	38	10	80
1"	CA/FSW-1	14	76	46	8	64
1 1/4"	CA/FSW-11/4	16	98	52	4	32
1 1/2"	CA/FSW-11/2	18	104	58	4	24
2"	CA/FSW-2	19	127	73	2	24

**ANGLE FILTER WITH MAGNETIC INSERT**

**Filter mesh:** 40 holes /cm<sup>2</sup>  
 magnetic cartridge  
**Magnetic power** 1500 Gauss  
**T max** 120°C  
**PN** 10 bar



size	code	dimensions			pcs / pack	pcs / box
		A (mm)	B (mm)	H (mm)		
1/2"	CA/FMS-15	12	57	53	12	120
3/4"	CA/FMS-20	13	67	64	9	72
1"	CA/FMS-25	14	76	72	5	50

# 2

## Connection hoses





KARBO CONNECTION HOSES F X M10  
**Duro**

- Plastic braid
- Stainless steel connections
- Inner corrugated PE-RT pipe  
Use: Domestic Drinking water installations  
and heating installations
- 10-year warranty
- Protection Certificate **244808**

Type	Operating temperature	Nominal pressure	Flow (at 3 bar)
KARBO	70°C	10 bar	28 l/min

**KARBO HOSES IN NYLON BRAID, INTERNAL PE-RT CORRUGATED PIPE, Q=28 l/min**

**KARBO 3/8" x 3/8" F/F 8 mm int. diam.**



length (mm)	code	pcs/pack	pcs/box
200	DFK-300702	10	100
300	DFK-300704	10	100
400	DFK-300706	10	100
500	DFK-300656	10	100
600	DFK-300657	10	100
800	DFK-301248	10	100
1000	DFK-300758	10	100

**KARBO 3/8" x 3/8" F/M 8 mm int. diam.**



length (mm)	code	pcs/pack	pcs/box
200	DFK-300720	10	100
300	DFK-300722	10	100
400	DFK-300724	10	100
500	DFK-300662	10	100

**KARBO 3/8" x 1/2" F/F 8 mm int. diam.**



length (mm)	code	pcs/pack	pcs/box
200	DFK-300714	10	100
300	DFK-300716	10	100
400	DFK-300718	10	100
500	DFK-300660	10	100
600	DFK-300661	10	100
800	DFK-301421	10	100

**KARBO 1/2" x 1/2" F/F 8 mm int. diam.**



length (mm)	code	pcs/pack	pcs/box
200	DFK-300708	10	100
250	DFK-300709	10	100
300	DFK-300710	10	100
350	DFK-300711	10	100
400	DFK-300712	10	100
500	DFK-300658	10	100
600	DFK-300659	10	100
700	DFK-300748	10	100
800	DFK-301131	10	100
1000	DFK-300759	10	100
1200	DFK-303511	10	50
1500	DFK-300760	10	50

**KARBO 3/8" F x M10 8 mm int. diam.**



length (mm)	code	pcs/pack	pcs/box
300	DFK-302180	10	100
400	DFK-302181	10	100
500	DFK-302182	10	100
600	DFK-304753	10	100
800	DFK-304754	10	100
1000	DFK-304755	10	100

**KARBO 1/2" F x M10 8 mm int. diam.**



length (mm)	code	pcs/pack	pcs/box
400	DFK-304919	10	100
500	DFK-304804	10	100
600	DFK-304805	10	100
800	DFK-304882	10	100

# 3

## Brass fittings

---



Union F/M  
**Calido**

- Construction allowing for 5° aberration from the axis of fitting
- Durable spline (6 splines)
- The ball-shaped nipple head provides sealing on the conical seat of the fitting

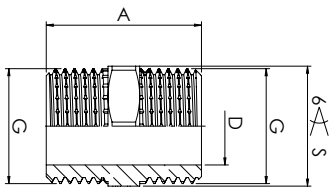
**BRASS FITTINGS**

 CA: brand code **CALIDO**
**FEATURES**

OF THREADED CONNECTORS / FOR SOLDERING

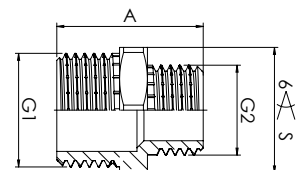
**PARAMETERS FOR WATER, GLYCOL, COMPRESSED AIR**
**WORKING TEMPERATURE** T min=10°C  
T max=110°C

**NOMINAL PRESSURE** 16 bar

**THREADED BRASS FITTINGS**
**HEXAGONAL NIPPLE M/M**


size	code	dimensions				pcs / pack	pcs / box
		G	A (mm)	S (mm)	D (mm)		
1/4"	CA/KM-280-8	1/4"	19	14	8,5	5	1700
3/8"	CA/KM-280-10	3/8"	22	17	11	5	700
1/2"	CA/KM-280-15	1/2"	26	22	15	5	450
1/2"	CA/KM-280-15-PU**	1/2"	36	22	13	5	350
1/2"	CA/KM-280-15-D*	1/2"	36	22	16	5	400
3/4"	CA/KM-280-20	3/4"	28	27	20,5	5	240
3/4"	CA/KM-280-20-PU**	3/4"	38	27	17	5	240
3/4"	CA/KM-280-20-D*	3/4"	38	27	20,5	5	250
1"	CA/KM-280-25	1"	30	34	26	5	170
1"	CA/KM-280-25-PU**	1"	43	34	23	5	100
1"	CA/KM-280-25-D*	1"	43	34	26	5	150
1 1/4"	CA/KM-280-32	1 1/4"	35	43	35	5	100

\* long version \*\* flat gasket version

**REDUCING HEXAGONAL NIPPLE M/M**


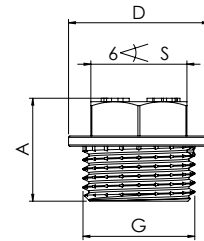
size	code	dimensions				pcs / pack	pcs / box
		G1	G2	A (mm)	S (mm)		
1/4" x 3/8"	CA/KM-245-108	3/8"	1/4"	21	18	5	700
1/4" x 1/2"	CA/KM-245-158	1/2"	1/4"	23	22	5	550
3/8" x 1/2"	CA/KM-245-1510	1/2"	3/8"	24,5	22	5	500
3/4" x 1/2"	CA/KM-245-2015	3/4"	1/2"	29	27	5	300
1/2" x 1"	CA/KM-245-2515	1"	1/2"	29	33	5	160
3/4" x 1"	CA/KM-245-2520	1"	3/4"	31	33	5	200
1 1/4" x 1"	CA/KM-245-3225	1 1/4"	1"	37	43	5	170

REDUCING NIPPLE WITH O-RING FOR MANIFOLDS M/M



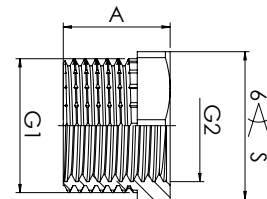
size	code	pcs / pack	pcs / box
3/4" x 1/2"	CA/KG-00420x15-O	5	400

PLUG M



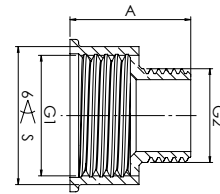
size	code	dimensions			pcs / pack	pcs / box
		A (mm)	S	D		
3/8"	CA/KM-290-10	15	14	20,5	5	700
1/2"	CA/KM-290-15	17,5	17	25	5	600
3/4"	CA/KM-290-20	19	19	30	5	400
1"	CA/KM-290-25	21,5	22	37	5	250

REDUCTION M/F



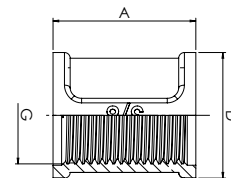
size	code	dimensions				pcs / pack	pcs / box
		G1	G2	A (mm)	S (mm)		
1/2"M x 1/4"F	CA/KM-241-158	1/2"	1/4"	16	22	5	600
1/2"M x 3/8"F	CA/KM-241-1510	1/2"	3/8"	16	22	5	400
3/4"M x 1/2"F	CA/KM-241-2015	3/4"	1/2"	16	27	5	600
1"M x 1/2"F	CA/KM-241-2515	1"	1/2"	18	34	5	200
1"M x 3/4"F	CA/KM-241-2520	1"	3/4"	18	34	5	400

REDUCING HEX UNION M/F



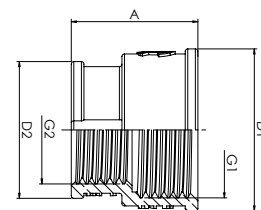
size	code	dimensions				pcs / pack	pcs / box
		G1	G2	A (mm)	S (mm)		
1/2"F x 3/8"M	CA/KM-246-1510	1/2"	3/8"	21	24	5	800
3/4"F x 1/2"M	CA/KM-246-2015	3/4"	1/2"	25	29,6	5	450
1/2"M x 1"F	CA/KM-246-2515	1"	1/2"	26,5	37	5	200
1"F x 3/4"M	CA/KM-246-2520	1"	3/4"	26	37	5	280
1 1/4"F x 1"M	CA/KM-246-3225	1"	1 1/4"	32	46	5	170

SOCKET F/F



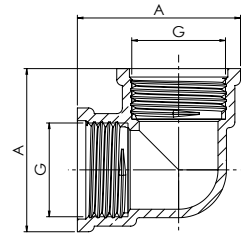
size	code	dimensions			pcs / pack	pcs / box
		G	A (mm)	D (mm)		
3/8"	CA/KM-270-10	3/8"	25	22	5	400
1/2"	CA/KM-270-15	1/2"	28	26	5	330
3/4"	CA/KM-270-20	3/4"	34	32	5	150
1"	CA/KM-270-25	1"	39	39	5	100

REDUCING SOCKET F/F



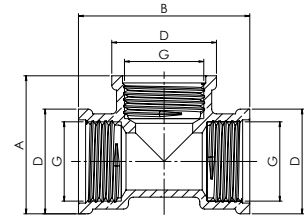
size	code	dimensions					pcs / pack	pcs / box
		G1	G2	A	D1	D2		
1/2" x 3/8"	CA/KM-240-1510	1/2"	3/8"	24	28	23	5	450
3/4" x 1/2"	CA/KM-240-2015	3/4"	1/2"	25	32	27	5	250
1" x 1/2"	CA/KM-240-2515	1"	1/2"	32	39	27	5	250
1" x 3/4"	CA/KM-240-2520	1"	3/4"	28	39	32	5	150

ELBOW F/F



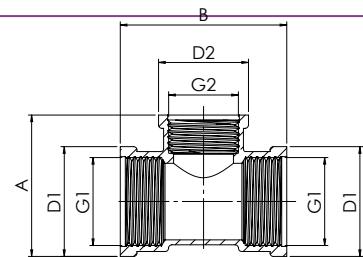
size	code	dimensions		pcs / pack	pcs / box
		G	A (mm)		
3/8"	CA/KM-90-10	3/8"	29	5	300
1/2"	CA/KM-90-15	1/2"	35	5	200
3/4"	CA/KM-90-20	3/4"	43	5	110
1"	CA/KM-90-25	1"	50	5	80

TEE F/F/F



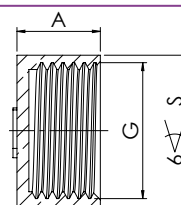
size	code	dimensions				pcs / pack	pcs / box
		G	A (mm)	B (mm)	D (mm)		
3/8"	CA/KM-130-10	3/8"	29	36	22	5	250
1/2"	CA/KM-130-15	1/2"	33,5	40	27	5	150
3/4"	CA/KM-130-20	3/4"	41,5	50	33	5	100
1"	CA/KM-130-25	1"	50	60	40	5	50

REDUCTION TEE F/F/F



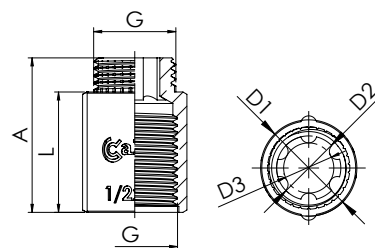
size	code	dimensions						pcs / pack	pcs / box
		G1	G2	A (mm)	B (mm)	D1 (mm)	D2 (mm)		
3/4" x 1/2" x 3/4"	CA/KM-130R-201520	3/4"	1/2"	42,5	50	33	27	5	100
1" x 1/2" x 1"	CA/KM-130R-251525	1"	1/2"	47	52	40	27	5	70
1" x 3/4" x 1"	CA/KM-130R-252025	1"	3/4"	47	57	40	33	5	65

CAP F



size	code	dimensions			pcs / pack	pcs / box
		G	A	S		
3/8"	CA/KM-300-10	3/8"	10,5	19	5	1000
1/2"	CA/KM-300-15	1/2"	13	24	5	780
3/4"	CA/KM-300-20	3/4"	14	30	5	450
1"	CA/KM-300-25	1"	16	37	5	320

CYLINDRICAL EXTENSION HEAVY DUTY M/F

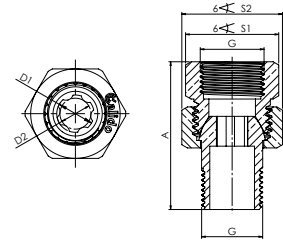


size	code	dimensions						pcs / pack	pcs / box
		G	L	A	D1	D2	D3		
1/2" x 10 mm	CA/KM-760-15-L10	1/2"	10	18,5	24	16	12,5	5	700
1/2" x 15 mm	CA/KM-760-15-L15	1/2"	15	23,5	24	16	12,5	5	600
1/2" x 20 mm	CA/KM-760-15-L20	1/2"	20	28,5	24	16	12,5	5	500
1/2" x 25 mm	CA/KM-760-15-L25	1/2"	25	33,5	24	16	12,5	5	400
1/2" x 30 mm	CA/KM-760-15-L30	1/2"	30	38,5	24	16	12,5	5	400
1/2" x 40 mm	CA/KM-760-15-L40	1/2"	40	48,5	24	16	12,5	5	300
1/2" x 50 mm	CA/KM-760-15-L50	1/2"	50	58,5	24	16	12,5	5	250
1/2" x 60 mm	CA/KM-760-15-L60	1/2"	60	68,5	24	16	12,5	5	120
1/2" x 80 mm	CA/KM-760-15-L80	1/2"	80	88,5	24	16	12,5	5	100
1/2" x 100 mm	CA/KM-760-15-L100	1/2"	100	108,5	24	16	12,5	5	80
1/2" x 10 mm	CA/KM-760S-15-L10*	1/2"	10	18,5	24	16	12,5	5	400
1/2" x 15 mm	CA/KM-760S-15-L15*	1/2"	15	23,5	24	16	12,5	5	350
1/2" x 20 mm	CA/KM-760S-15-L20*	1/2"	20	28,5	24	16	12,5	5	300
1/2" x 25 mm	CA/KM-760S-15-L25*	1/2"	25	33,5	24	16	12,5	5	300
1/2" x 30 mm	CA/KM-760S-15-L30*	1/2"	30	38,5	24	16	12,5	5	250
1/2" x 40 mm	CA/KM-760S-15-L40*	1/2"	40	48,5	24	16	12,5	5	200
1/2" x 50 mm	CA/KM-760S-15-L50*	1/2"	50	58,5	24	16	12,5	5	150
1/2" x 60 mm	CA/KM-760S-15-L60*	1/2"	60	68,5	24	16	12,5	5	100
1/2" x 80 mm	CA/KM-760S-15-L80*	1/2"	80	88,5	24	16	12,5	5	80
1/2" x 100 mm	CA/KM-760S-15-L100*	1/2"	100	108,5	24	16	12,5	5	60
3/4" x 10 mm	CA/KM-760-20-L10	3/4"	10	20	31	20	17,2	5	500
3/4" x 15 mm	CA/KM-760-20-L15	3/4"	15	25	31	20	17,2	5	400
3/4" x 20 mm	CA/KM-760-20-L20	3/4"	20	30	31	20	17,2	5	300
3/4" x 25 mm	CA/KM-760-20-L25	3/4"	25	35	31	20	17,2	5	250
3/4" x 30 mm	CA/KM-760-20-L30	3/4"	30	40	31	20	17,2	5	200
3/4" x 40 mm	CA/KM-760-20-L40	3/4"	40	50	31	20	17,2	5	180
3/4" x 50 mm	CA/KM-760-20-L50	3/4"	50	60	31	20	17,2	5	150
1" x 10 mm	CA/KM-760-25-L10	1"	10	20	38	25,5	22,2	5	300
1" x 15 mm	CA/KM-760-25-L15	1"	15	26	38	25,5	22,2	5	250
1" x 20 mm	CA/KM-760-25-L20	1"	20	31	38	25,5	22,2	5	200
1" x 25 mm	CA/KM-760-25-L25	1"	25	36	38	25,5	22,2	5	180
1" x 30 mm	CA/KM-760-25-L30	1"	30	41	38	25,5	22,2	5	150
1" x 40 mm	CA/KM-760-25-L40	1"	40	51	38	25,5	22,2	5	120
1" x 50 mm	CA/KM-760-25-L50	1"	50	61	38	25,5	22,2	5	100

\* Reinforced version

**UNION F/M**

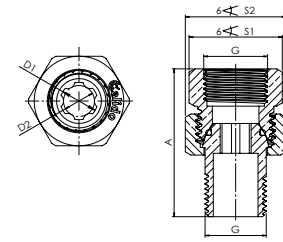
ability to deviate from the axis by 5°



size	code	dimensions						pcs / pack	pcs / box
		G	A (mm)	D1 (mm)	D2 (mm)	S1 (mm)	S2 (mm)		
3/8"	CA/KG-1010-S	3/8"	34,5	11,5	8,3	22	24,5	1	250
1/2"	CA/KG-9311-15*	1/2"	45,3	15	12,2	27	29,7	20	180
3/4"	CA/KG-9311-20*	3/4"	48	20	17,4	32	37	12	120
1"	CA/KG-9311-25*	1"	54	26	22,2	38	45,7	10	60
1 1/4"	CA/KG-9311-32*	1 1/4"	65	30	24,3	47	52	6	48
1 1/2"	CA/KG-9311-40*	1 1/2"	65	39,6	30,6	55	64	4	32
2"	CA/KG-9311-50*	2"	84	50	-	67	80	2	18

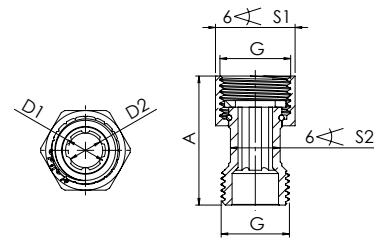
**UNION WITH O-RING F/M**

ability to deviate from the axis by 5°



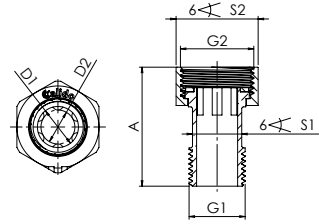
size	code	dimensions						pcs / pack	pcs / box
		G	A (mm)	D1 (mm)	D2 (mm)	S1 (mm)	S2 (mm)		
1/2"	CA/KG-9311-15-O	1/2"	45,3	15	12,2	27	29,7	20	180
3/4"	CA/KG-9311-20-O	3/4"	48	20	17,4	32	37	12	120
1"	CA/KG-9311-25-O	1"	54	26	22,2	38	45,7	10	80
1 1/4"	CA/KG-9311-32-O	1 1/4"	65	30	24,3	47	52	6	48
1 1/2"	CA/KG-9311-40-O	1 1/2"	65	39,6	30,6	55	64	4	32
2"	CA/KG-9311-50-O	2"	84	50	-	67	80	2	18

**HALF STRAIGHT UNION CONNECTOR F/M**



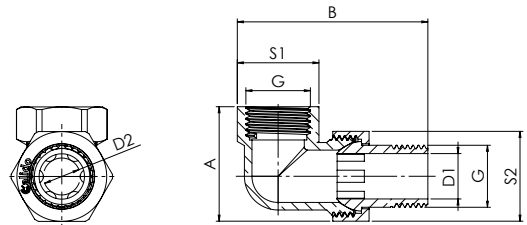
size	code	dimensions						pcs / pack	pcs / box	
		G	A (mm)	C (mm)	D1 (mm)	D2 (mm)	S1 (mm)			S2 (mm)
1/2"	CA/KG-1215-RP	1/2"	39	7,4	12	10,4	24	15	50	300
3/4"	CA/KG-1220-RP	3/4"	42	6,7	15	12,5	30	19	30	180
1"	CA/KG-1225-RP	1"	46	8,3	20	17,5	37	25	20	120

WATER METER HALF UNION F/M SET OF 2 PCS



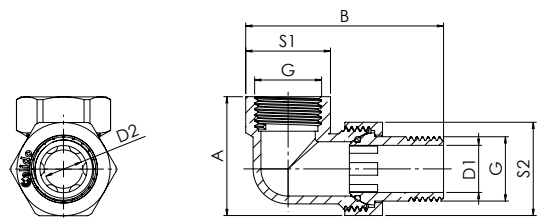
size	code	dimensions							pcs / pack	pcs / box
		G1	G2	A	D1	D2	S1	S2		
1/2"	CA/KG-703-15-KPL	1/2"	3/4"	43,5	15	12,4	18	30	15	135
3/4"	CA/KG-703-20-KPL	3/4"	1"	50,5	20	17,2	23	37	10	80
1"	CA/KG-703-25-KPL	1"	1 1/4"	56	26	22,4	30	46	5	50
1 1/4"	CA/KG-1232	1 1/4"	1 1/2"	66,5	31	24,6	-	53	1 set	25
1 1/2"	CA/KG-1240	1 1/2"	2"	74,5	36,5	29,3	-	63,5	1 set	10

ANGLED UNION F/M



size	code	dimensions							S2 (mm)	pcs / pack	pcs / box
		G	A (mm)	B (mm)	D1 (mm)	D2 (mm)	S1 (mm)				
1/2"	CA/KG-9310-15	1/2"	38	63	15	12,2	27	29,7	15	120	
3/4"	CA/KG-9310-20	3/4"	44,5	70	20	17,4	32	37	10	90	
1"	CA/KG-9310-25	1"	56	81	26	22,2	38	45,7	6	54	

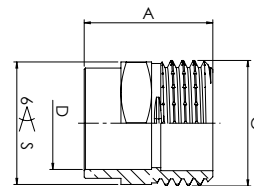
ANGLED UNION F/M WITH O-RING



size	code	dimensions							pcs / pack	pcs / box
		G	A (mm)	B (mm)	D1 (mm)	D2 (mm)	S1 (mm)	S2 (mm)		
1/2"	CA/KG-9310-15-O	1/2"	38	63	15	12,2	27	29,7	15	120
3/4"	CA/KG-9310-20-O	3/4"	44,5	70	20	17,4	32	37	10	90
1"	CA/KG-9310-25-O	1"	56	81	26	22,2	38	45,7	6	54
1 1/4"	CA/KG-9310-32-O	1 1/4"	65	104	34	24,3	47	52	4	32
1 1/2"	CA/KG-9310-40-O	1 1/2"	72	115	39,6	30,7	55	64	3	24
2"	CA/KG-9310-50-O	2"	90	149	50	-	67	80	2	12

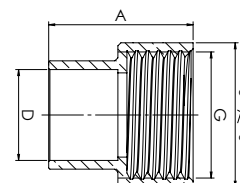
SOLDERED BRASS FITTINGS

STRAIGHT ADAPTOR Cu/M



size	code	dimensions				pcs / pack	pcs / box
		G	A (mm)	S (mm)	D (mm)		
15 x 1/2"	CA/KM-243GCU-1515	1/2"	21	20	15,1	5	450
18 x 1/2"	CA/KM-243GCU-1815	1/2"	25	21	18,1	5	400
22 x 1/2"	CA/KM-243GCU-2215	1/2"	27	25	22,1	5	350
18 x 3/4"	CA/KM-243GCU-1820	3/4"	25	26	18,1	5	300
22 x 3/4"	CA/KM-243GCU-2220	3/4"	27	26	22,1	5	300
28 x 3/4"	CA/KM-243GCU-2820	3/4"	31	36	28,2	5	250
22 x 1"	CA/KM-243GCU-2225	1"	27	34	22,1	5	200
28 x 1"	CA/KM-243GCU-2825	1"	28	34	28,1	5	170

STRAIGHT ADAPTOR Cu/F



size	code	dimensions				pcs / pack	pcs / box
		A (mm)	S (mm)	D (mm)	G		
15 x 1/2"	CA/KM-270GCU-1515	24	24	15,1	1/2"	5	450
18 x 1/2"	CA/KM-270GCU-1815	26	24	18,1	1/2"	5	400
22 x 1/2"	CA/KM-270GCU-2215	27	25	22,1	1/2"	5	250
28 x 1"	CA/KM-270GCU-2825	28	37	28,1	1"	5	170

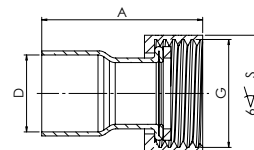
WALL PLATE WITH ELBOWS Cu/F



size	code	pcs / pack	pcs / box
15 x 1/2" x 100MM	CA/KL-LISTWA BAT.100	-	50
15 x 1/2" x 150MM	CA/KL-LISTWA BAT.150	-	50

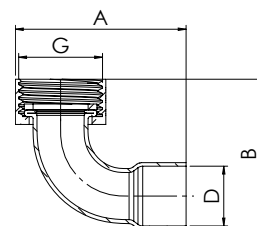
CONNECTORS WITH MOVEABLE NUT

STRAIGHT TAP CONNECTOR F/Cu



size	code	dimensions				pcs / pack	pcs / box
		G	A	D	S		
15 x 1/2"	CA/KM-ZB-15x1/2	1/2"	32	15,2	23	5	450
18 x 1/2"	CA/KM-ZB-18X1/2	1/2"	36	18,2	23	5	360
22 x 1/2"	CA/KM-ZB-22X1/2	1/2"	40	22,2	23	5	150
15 x 3/4"	CA/KM-ZB-15x3/4	3/4"	34	15,2	29	5	400
18 x 3/4"	CA/KM-ZB-18X3/4	3/4"	39	18,2	29	5	200
22 x 3/4"	CA/KM-ZB-22x3/4	3/4"	43	22,2	29	5	150
22 x 1"	CA/KM-ZB-22x1	1"	46	22,2	36	5	100
28 x 1"	CA/KM-ZB-28x1	1"	51	28,2	36	5	90

BENT TAP CONNECTOR F/Cu



size	code	dimensions				pcs / pack	pcs / box
		G	A (mm)	B (mm)	D (mm)		
15 x 1/2"	CA/KM-LB-15X1/2	1/2"	42	47	15,2	5	250
18 x 1/2"	CA/KM-LB-18X1/2	1/2"	46	48	18,2	5	200
22 x 1/2"	CA/KM-LB-22X1/2	1/2"	52	50	22,2	5	120
15 x 3/4"	CA/KM-LB-15X3/4	3/4"	50	46	15,2	5	200
18 x 3/4"	CA/KM-LB-18X3/4	3/4"	50	58	18,2	5	150
22 x 3/4"	CA/KM-LB-22X3/4	3/4"	52	60	22,2	5	120
22 x 1"	CA/KM-LB-22X1	1"	64	60	22,2	5	70
28 x 1"	CA/KM-LB-28X1	1"	70	68	28,2	5	250

QUICK-CONNECT 3/4" FOR THE EXPANSION TANK



size	code	pcs / pack	pcs / box
3/4"	CA/KG-2020-SZZS	5	80

**BRASS CONNECTORS, POLISHED, CHROME-PLATED**

**CA:** brand code **CALIDO**

**FEATURES**  
THREADED CONNECTORS

**PARAMETERS** FOR WATER, GLYCOL, COMPRESSED AIR

**WORKING TEMPERATURE** T min=10°C  
T max=110°C

**NOMINAL PRESSURE** 16 bar

**SOCKET F/F**



size	code	pcs / pack	pcs / box
3/8"	CA/KC-27010	5	600
1/2"	CA/KC-27015	5	350
3/4"	CA/KC-27020	5	200

**HEXAGONAL NIPPLE M/M**



size	code	pcs / pack	pcs / box
3/8"	CA/KC-28010	5	1000
1/2"	CA/KC-28015	5	500
3/4"	CA/KC-28020	5	350

**REDUCING HEXAGONAL NIPPLE M/M**



size	code	pcs / pack	pcs / box
1/2" x 3/8"	CA/KC-2451510	5	650
3/4" x 1/2"	CA/KC-2452015	5	400

**ELBOW F/F**



size	code	pcs / pack	pcs / box
3/8"	CA/KC-9010	5	400
1/2"	CA/KC-9015	5	250
3/4"	CA/KC-9020	5	150

ELBOW F/M



size	code	pcs / pack	pcs / box
3/8"	CA/KC-9210	5	350
1/2"	CA/KC-9215	5	250
3/4"	CA/KC-9220	5	190

TEE F/F/F



size	code	pcs / pack	pcs / box
3/8"	CA/KC-13010	5	300
1/2"	CA/KC-13015	5	250
3/4"	CA/KC-13020	5	130

REDUCTION TEE F/F/F



size	code	pcs / pack	pcs / box
3/4"x1/2"x3/4"	CA/KC-130R201520	5	130

REDUCTION F/M



size	code	pcs / pack	pcs / box
1/2" x 3/8"	CA/KC-2411510	5	700
3/4" x 1/2"	CA/KC-2412015	5	500

FLANGED PLUG HEX. HEAD M



size	code	pcs / pack	pcs / box
3/8"	CA/KC-29010	5	900
1/2"	CA/KC-29015	5	600
3/4"	CA/KC-29020	5	400

**BLANKING CAP F**



size	code	pcs / pack	pcs / box
3/8"	CA/KC-30010	5	1000
1/2"	CA/KC-30015	5	780
3/4"	CA/KC-30020	5	450

**CYLINDRICAL EXTENSION HEAVY DUTY M/F**



size	code	pcs / pack	pcs / box
1/2"M x 1/2"F x 10	CA/KC-76015-10	5	550
1/2"M x 1/2"F x 15	CA/KC-76015-15	5	450
1/2"M x 1/2"F x 20	CA/KC-76015-20	5	360
1/2"M x 1/2"F x 25	CA/KC-76015-25	5	320
1/2"M x 1/2"F x 30	CA/KC-76015-30	5	250
1/2"M x 1/2"F x 40	CA/KC-76015-40	5	220
1/2"M x 1/2"F x 50	CA/KC-76015-50	5	180
3/4"M x 3/4"F x 10	CA/KC-76020-10	5	400
3/4"M x 3/4"F x 15	CA/KC-76020-15	5	350
3/4"M x 3/4"F x 20	CA/KC-76020-20	5	300
3/4"M x 3/4"F x 25	CA/KC-76020-25	5	250
3/4"M x 3/4"F x 30	CA/KC-76020-30	5	220
3/4"M x 3/4"F x 40	CA/KC-76020-40	5	170
3/4"M x 3/4"F x 50	CA/KC-76020-50	5	140

**REDUCING HEX UNION F/M**

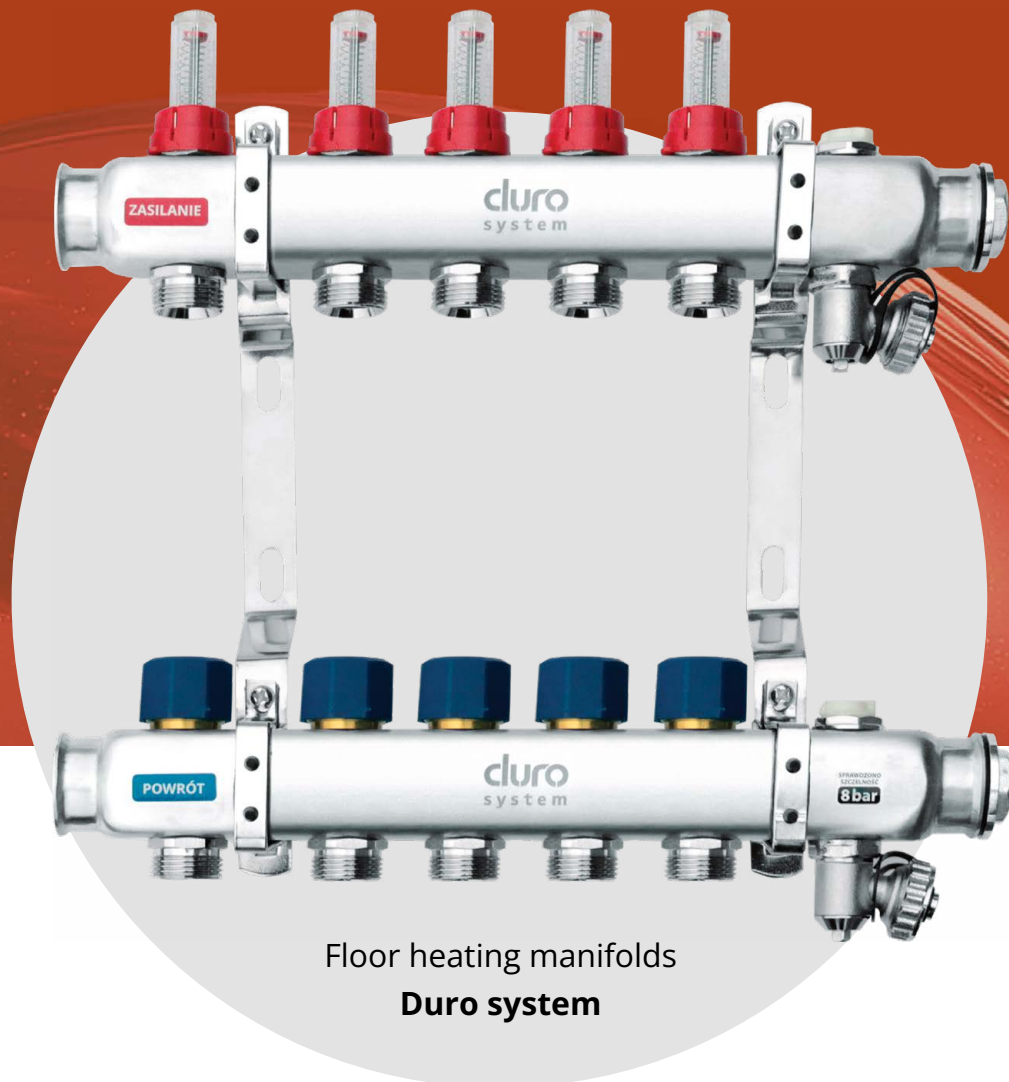


size	code	pcs / pack	pcs / box
1/2"F x 3/8"M	CA/KC-246R1510	5	500
3/4"F x 3/8"M	CA/KC-246R2010	5	450
3/4"F x 1/2"M	CA/KC-246R2015	5	400
1"F x 3/4"M	CA/KC-30625X20	10	150

# 4

## Underfloor heating

---



Floor heating manifolds  
**Duro system**

- Made of brushed stainless steel
- 100 % tightness tested
- Rotating drain valves at each manifold

PEX PIPE CONNECTORS

PEX PIPE FITTING

T max 95°C  
PN 10 bar



dimensions	code	pcs / pack	pcs / box
16 x 2,0 x 1/2"	CA/ZG-A-PPEX1/2	1	250

PEX PIPE FITTING

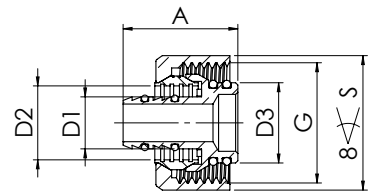
T max 95°C  
PN 10 bar



dimensions	code	pcs / pack	pcs / box
16 x 2,0 x 3/4"	D/S-Z-PPEX16X3/4	1	250

PEX PIPE FITTING

Four O-rings  
T max 95°C  
PN 10 bar

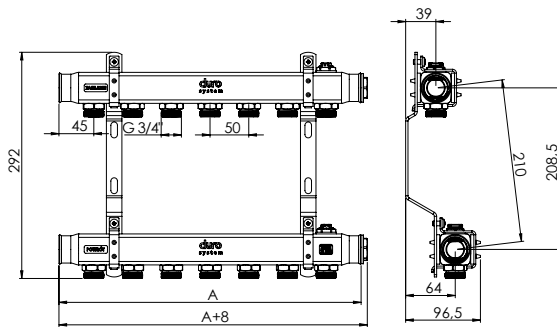


dimensions	code	G	A (mm)	D1 (mm)	D2 (mm)	D3 (mm)	S (mm)	pcs / pack	pcs / box
16 x 2,0 x 3/4"	D/S-Z-PPEX-40-16X3/4	3/4"	25,6	11,6	16,5	17,9	30	1	250

STAINLESS STEEL MANIFOLDS

HEATING SYSTEM MANIFOLD

T max 90°C  
PN 10 bar

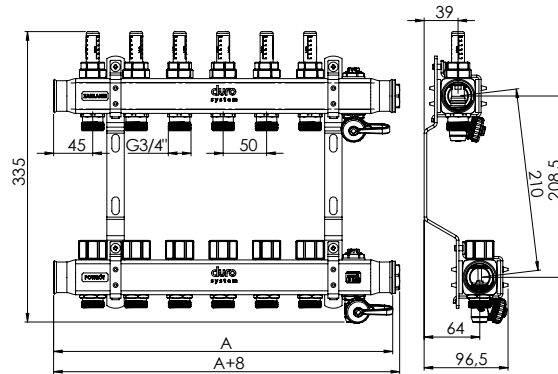


- Profiled sections (40 x 41 mm) made of brushed stainless steel, grade 1.4301 (AISI 304), wall thickness 1.6 mm,
- stubs 3/4" M for connecting to heating systems with the eurocone socket,
- 2 x 1" M screw-in plug, nickel-plated with a gasket (manifolds plugged on one side),
- 2 brackets with damping inserts liners,
- 2 manual vents 1/2",
- beams marked with stickers: return (blue) and supply (red).

dimensions	code	number of sections	A width (mm)	height (mm)	depth (mm)	spacing (mm)
R-2	D/S-RN-CO-2	2	154	290	100	210
R-3	D/S-RN-CO-3	3	204	290	100	210
R-4	D/S-RN-CO-4	4	254	290	100	210
R-5	D/S-RN-CO-5	5	304	290	100	210
R-6	D/S-RN-CO-6	6	354	290	100	210
R-7	D/S-RN-CO-7	7	404	290	100	210
R-8	D/S-RN-CO-8	8	454	290	100	210
R-9	D/S-RN-CO-9	9	504	290	100	210
R-10	D/S-RN-CO-10	10	554	290	100	210
R-11	D/S-RN-CO-11	11	604	290	100	210
R-12	D/S-RN-CO-12	12	654	290	100	210

**UNDERFLOOR HEATING MANIFOLD**

**T max 70°C**  
**PN 6 bar**

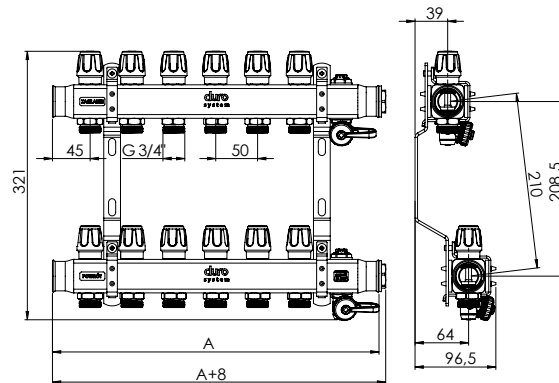


- Profiled sections (40 x 41 mm) made of brushed stainless steel, grade 1.4301 (AISI 304) wall thickness 1.6 mm,
- stubs 3/4" M for connecting to heating systems with the euroconus socket,
- 2 x 1" M screw-in plug, nickel-plated with a gasket (manifolds plugged on one side)
- flowmeters 0-3 l/min (supply),
- 2 brackets with damping inserts liners,
- 2 manual vents 1/2",
- beams marked with stickers: return (blue) and supply (red),
- control valves with 30 x 1,5 M connection with plastic control pins (return),
- drain valves 3/4" M fitted with a plug with a gasket which is also used for opening and closing valves.

dimensions	code	number of sections	A width (mm)	height (mm)	depth (mm)	spacing (mm)
R-2	D/S-RN-OP-2	2	204	350	100	210
R-3	D/S-RN-OP-3	3	254	350	100	210
R-4	D/S-RN-OP-4	4	304	350	100	210
R-5	D/S-RN-OP-5	5	354	350	100	210
R-6	D/S-RN-OP-6	6	404	350	100	210
R-7	D/S-RN-OP-7	7	454	350	100	210
R-8	D/S-RN-OP-8	8	504	350	100	210
R-9	D/S-RN-OP-9	9	554	350	100	210
R-10	D/S-RN-OP-10	10	604	350	100	210
R-11	D/S-RN-OP-11	11	654	350	100	210
R-12	D/S-RN-OP-12	12	704	350	100	210
R-13	D/S-RN-OP-13	13	754	350	100	210
R-14	D/S-RN-OP-14	14	804	350	100	210
R-15	D/S-RN-OP-15	15	854	350	100	210
R-16	D/S-RN-OP-16	16	904	350	100	210

**MANIFOLD WITH CONTROL VALVES**

**Working temp. 90°C**  
**PN 10 bar**

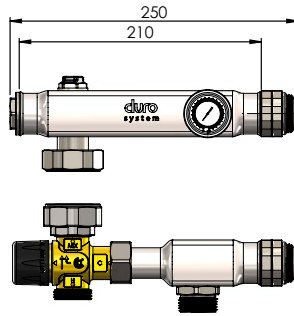


- Profiled sections (40 x 41 mm) made of brushed stainless steel, grade 1.4301 (AISI 304), wall thickness 1.6 mm,
- stubs 3/4" M for connecting to heating systems with the euroconus socket,
- 2 manual vents 1/2",
- 2 x 1" M screw-in plug, nickel-plated with a gasket (manifolds plugged on one side),
- beams marked with return (blue) and supply (red) stickers,
- drain valves 3/4" M fitted with a plug with a gasket which is also used for opening and closing valves,
- control valves with knobs: red on the supply manifold, blue on the return manifold,
- manifold brackets with vibration damping pads.

dimensions	code	number of sections	A width (mm)	height (mm)	depth (mm)	spacing (mm)
R-2	D/S-RN-ZR-2	2	204	321	100	210
R-3	D/S-RN-ZR-3	3	254	321	100	210
R-4	D/S-RN-ZR-4	4	304	321	100	210
R-5	D/S-RN-ZR-5	5	354	321	100	210
R-6	D/S-RN-ZR-6	6	404	321	100	210
R-7	D/S-RN-ZR-7	7	454	321	100	210
R-8	D/S-RN-ZR-8	8	504	321	100	210
R-9	D/S-RN-ZR-9	9	554	321	100	210
R-10	D/S-RN-ZR-10	10	604	321	100	210
R-11	D/S-RN-ZR-11	11	654	321	100	210
R-12	D/S-RN-ZR-12	12	704	321	100	210

STAINLESS STEEL MIXING GROUPS

MIXING GROUP WITHOUT PUMP

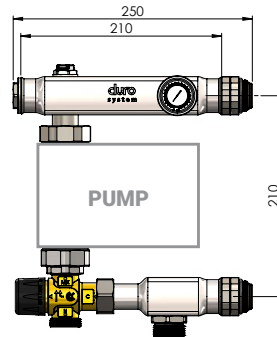


Mixing group without pump, with a Calido thermostatic three-way mixing valve.

**Working temp.** 90°C  
**PN** 10 bar

type	Kv	code
MIXING GROUP WITHOUT PUMP-A	1,6 m <sup>3</sup> /h	D/S-UMN-A-B/POMPY
MIXING GROUP WITHOUT PUMP-B	3,2 m <sup>3</sup> /h	D/S-UMN-B-B/POMPY

MIXING GROUP WITH PUMP

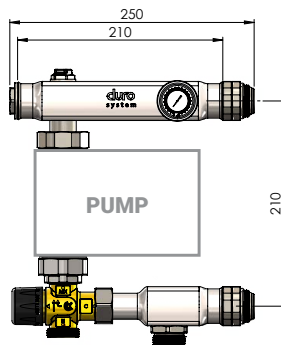


Mixing group with a Circula Helio 25/60-130 mm electronic pump with plug, with a Calido thermostatic three-way mixing valve.

**Working temp.** 90°C  
**PN** 10 bar

type	Kv	code
MIXING GROUP WITH PUMP-A	1,6 m <sup>3</sup> /h	D/S-UMN-A-HELIO25/60
MIXING GROUP WITH PUMP-B	3,2 m <sup>3</sup> /h	D/S-UMN-B-HELIO25/60

MIXING GROUP WITH PUMP

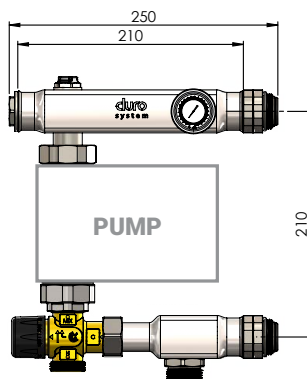


Mixing group with a Circula Mercurio 25/60-130 mm electronic pump with plug and power cable, with a Calido thermostatic three-way mixing valve.

**Working temp.** 90°C  
**PN** 10 bar

type	Kv	code
MIXING GROUP WITH PUMP-A	1,6 m <sup>3</sup> /h	D/S-UMN-A-MERC 25/60
MIXING GROUP WITH PUMP-B	3,2 m <sup>3</sup> /h	D/S-UMN-B-MERC 25/60

MIXING GROUP WITH PUMP



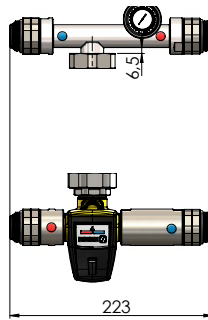
Mixing group with a Circula Titanio 25/60-130 mm electronic pump with a power cable, with a Calido thermostatic three-way mixing valve

**Working temp.** 90°C  
**PN** 10 bar

type	Kv	code
MIXING GROUP WITH PUMP-A	1,6 m <sup>3</sup> /h	D/S-UMN-A-TITAN 25/60
MIXING GROUP WITH PUMP-B	3,2 m <sup>3</sup> /h	D/S-UMN-B-TITAN 25/60

STAINLESS STEEL DUAL-FUNCTION MIXING SYSTEMS

MIXING GROUP WITHOUT PUMP

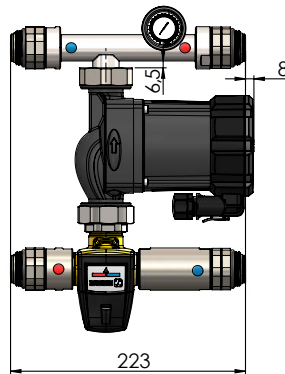


Mixing group without pump, with an ESBE VTA 552 thermostatic three-way mixing valve.

**Working temp.** 90°C  
**PN** 10 bar

type	Kv	code
MIXING GROUP WITHOUT PUMP	3,2 m³/h	D/S-UMND-B/POMPY

MIXING GROUP WITH PUMP



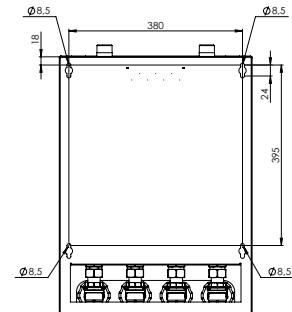
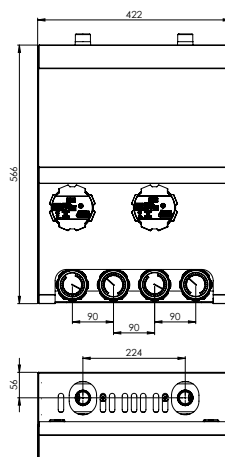
Dual-function mixing group with Circula Mercurio 25/60-130 mm electronic pump, with ESBE VTA 552 three-way thermostatic mixing valve.

**Working temp.** 90°C  
**PN** 10 bar

type	Kv	code
MIXING GROUP WITH PUMP	3,2 m³/h	D/S-UMND-MERC

PUMP GROUPS

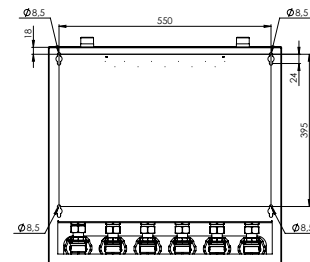
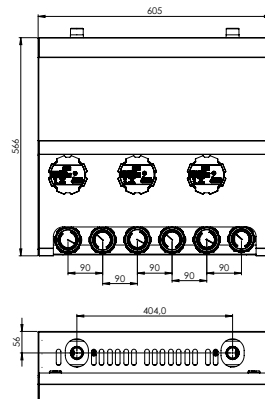
2-SECTION



Available colours of cabinets

- WHITE
- BLACK
- ANTHRACITE

3-SECTION



Available colours of cabinets

- WHITE
- BLACK
- ANTHRACITE

AVAILABLE CONFIGURATIONS

IV. UNDERFLOOR HEATING

WITH A THREE-WAY MIXING VALVE AND ELECTRIC ACTUATOR



APPLICATION:  
UNDERFLOOR HEATING,  
ZONE HEATING



Circula Pump  
Titano  
25/60-130

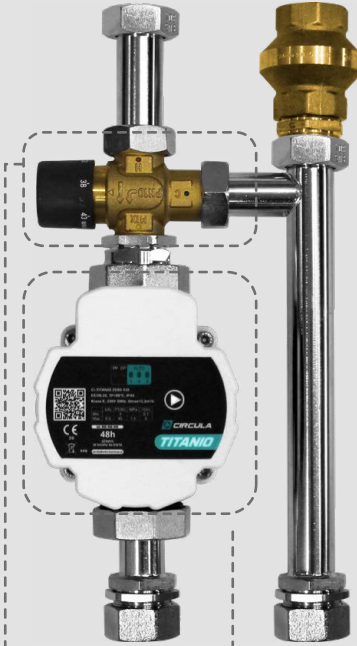
or

Circula Pump  
Titano  
25/80-130

WITH A THREE-WAY THERMOSTATIC VALVE



APPLICATION:  
UNDERFLOOR HEATING



Three-way thermostatic  
mixing valve  
Kv 1,6 m<sup>3</sup>/h

or

Three-way thermostatic  
mixing valve  
Kv 3,2 m<sup>3</sup>/h

Circula Pump  
Titano  
25/60-130

or

Circula Pump  
Titano  
25/80-130

DIRECT  
(WITHOUT MIXING)



APPLICATION:  
CENTRAL HEATING



DOMESTIC HOT WATER  
PREPARATION



Circula Pump  
Titano  
25/60-130

or

Circula Pump  
Titano  
25/80-130

CONFIGURE YOUR PUMP GROUP



ONLINE CONFIGURATOR



<https://arka-instalacje.pl/kalkulator>

## INSTALLATION CABINETS FOR MANIFOLDS

### CONCEALED CABINET



- adjustable height range 530 – 630 mm
- adjustable depth range 125 – 170 mm
- galvanized body made of a single sheet
- frame and cover powder-coated white RAL9003
- coin operated lock
- galvanized strips for manifold installation
- break-out side openings
- wing nuts – adjustment and installation without any additional tools

code	number of sections + shut-off fittings	number of sections + mixing system	width (mm)	height (mm)	depth (mm)
D/S-SIP-01	4	2	490	530-630	125-170
D/S-SIP-02	6	4	590	530-630	125-170
D/S-SIP-03	8	6	690	530-630	125-170
D/S-SIP-04	10	8	790	530-630	125-170
D/S-SIP-05	14	12	990	530-630	125-170
D/S-SIP-06	16	14	1110	530-630	125-170

### CONCEALED CABINET WITH BLEND



- adjustable height range 530 – 630 mm
- adjustable depth range 125 – 170 mm
- tendable trim (cover strip) allowing the cabinet to be flush with the wall surface
- galvanized body made from a single sheet
- frame, cover and trim powder-coated in white RAL 9003
- coin-operated lock
- galvanized mounting rails for manifold installation
- knock-out openings
- wing nuts – adjustment and installation without the use of additional tools

code	number of sections + shut-off fittings	number of sections + mixing system	width (mm)	height (mm)	depth (mm)
D/S-SIP-01B	4	2	490	530-630	125-170
D/S-SIP-02B	6	4	590	530-630	125-170
D/S-SIP-03B	8	6	690	530-630	125-170
D/S-SIP-04B	10	8	790	530-630	125-170
D/S-SIP-05B	14	12	990	530-630	125-170
D/S-SIP-06B	16	14	1110	530-630	125-170

CONCEALED CABINET WITH SPACE FOR A CONTROL PANEL



- adjustable height range: 755-855 mm
- adjustable depth range 125-170 mm
- galvanized body made from a single sheet
- frame, cover and trim powder-coated in white RAL 9003
- coin-operated lock
- knock-out openings
- galvanized mounting rails for manifold installation
- adapted for installation of a control strip
- wing nuts – adjustment and installation without the use of additional tools

code	number of sections + shut-off fittings	number of sections + mixing system	width (mm)	height (mm)	depth (mm)
D/S-SIP-01L	4	2	490	755-855	125-170
D/S-SIP-02L	6	4	590	755-855	125-170
D/S-SIP-03L	8	6	690	755-855	125-170
D/S-SIP-04L	10	8	790	755-855	125-170
D/S-SIP-05L	14	12	990	755-855	125-170
D/S-SIP-06L	16	14	1110	755-855	125-170

CONCEALED CABINET WITH SPACE FOR A CONTROL PANEL WITH BLEND



- adjustable height 755-855 mm
- adjustable depth 125-170 mm
- extendable cover panel for flush mounting with the wall surface
- galvanized steel body
- frame, cover and front panel powder-coated (white, ral 9003)
- coin-operated lock
- galvanized mounting rails for manifold installation
- compatible with a control rail
- break-out side openings
- wing nuts – adjustment and installation without the use of additional tools

code	number of sections + shut-off fittings	number of sections + mixing system	width (mm)	height (mm)	depth (mm)
D/S-SIP-01LB	4	2	490	755-855	125-170
D/S-SIP-02LB	6	4	590	755-855	125-170
D/S-SIP-03LB	8	6	690	755-855	125-170
D/S-SIP-04LB	10	8	790	755-855	125-170
D/S-SIP-05LB	14	12	990	755-855	125-170
D/S-SIP-06LB	16	14	1110	755-855	125-170

**SURFACE-MOUNTED CABINET**



- height 580 mm
- depth 135 mm
- removable rear panel facilitating wall mounting of the cabinet
- body and cover powder-coated (white, RAL 9003)
- galvanized guide rails for manifold installation
- coin-operated lock
- break-out side openings
- wing nuts – adjustment and installation without the use of additional tools

code	number of sections + shut-off fittings	number of sections + mixing system	width (mm)	height (mm)	depth (mm)
D/S-SIN-01	4	2	490	580	135
D/S-SIN-02	6	4	590	580	135
D/S-SIN-03	8	6	690	580	135
D/S-SIN-04	10	8	790	580	135
D/S-SIN-05	14	12	990	580	135
D/S-SIN-06	16	14	1160	580	135

**SURFACE-MOUNTED CABINET WITH REMOVABLE COVER AND SPACE FOR CONTROL PANEL**



- height: 750 mm
- depth: 135 mm
- removable rear panel facilitating wall mounting of the cabinet
- frame, cover and front panel powder-coated (white, RAL 9003)
- coin-operated lock
- break-out side openings
- removable front panel
- space for a control rail
- wing nuts – adjustment and installation without the use of additional tools

code	number of sections + shut-off fittings	number of sections + mixing system	width (mm)	height (mm)	depth (mm)
D/S-SIN-01LB	4	2	490	750	135
D/S-SIN-02LB	6	4	590	750	135
D/S-SIN-03LB	8	6	690	750	135
D/S-SIN-04LB	10	8	790	750	135
D/S-SIN-05LB	14	12	990	750	135
D/S-SIN-06LB	16	14	1160	750	135

# 5

## Pumps

---



**Mercurio Pump**  
Circula

- Protective Certificate **232337**
- Inspection sleeve positioned along the shaft axis
- Self-venting design

DOMESTIC HOT WATER CIRCULATION PUMPS

V. PUMPS

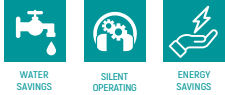
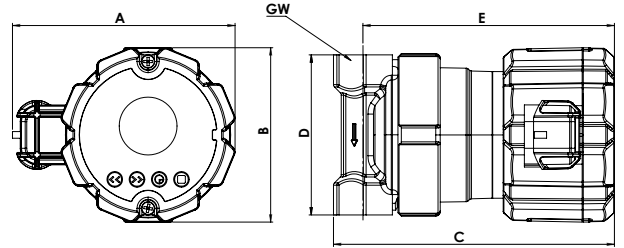
PLATINO PUMP

with a programmer and built-in temperature sensor

230V-50Hz, IP44, TF 95°C

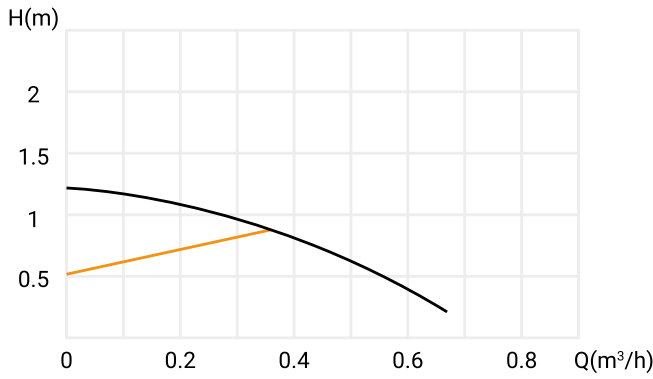
class F, PN10

- included:
  - power cable with plug



type	code	pcs / box
15/10	CI-PLATINO 15	8

A	B	C	D	E	GW
100	78	126	72	113	1/2"

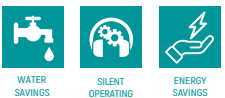
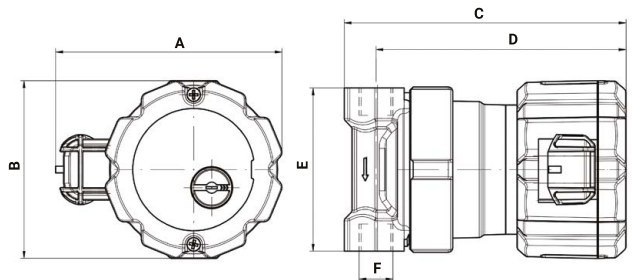


TORIO PUMP

230V-50Hz, IP44, Tmax 95°C

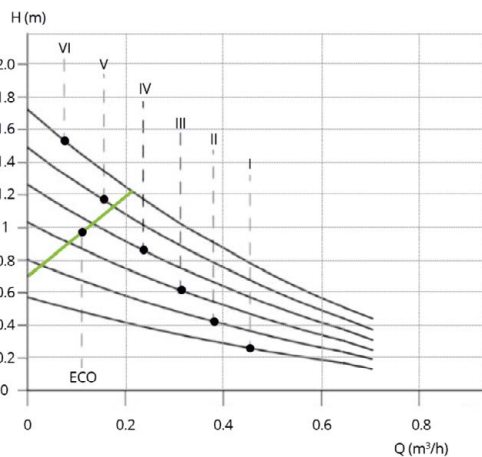
class F, PN10

- included:
  - power cable with plug



type	code	pcs / box
15/12	CI-TORIO 15/12	8

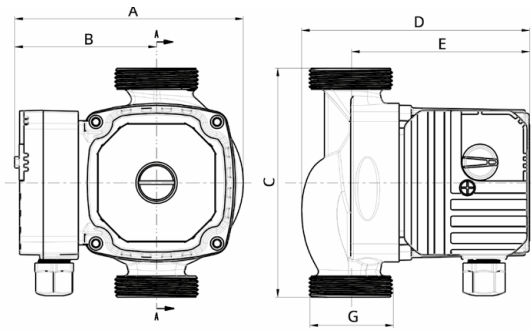
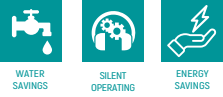
A	B	C	D	E	F
100	79	125	111	72	1/2"



**PC 3-SPEED PUMP**

potable water, GLAZE 221  
230V~50Hz, IP44, TF 110°C  
class F, PN10

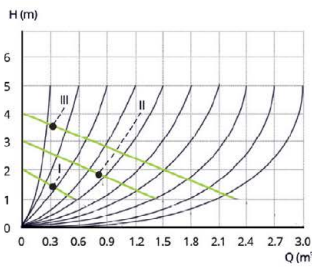
- included:
- half-unions
  - power cable with plug



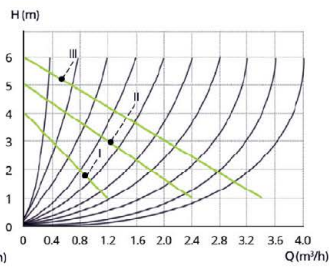
type	code	maximum flow (m³/h)	max. lifting height [m]	mounting length (mm)	connected diameter of the body [inch]	pcs / box	A	B	C	D	E	G
25/40 180	CI-PC25/40-180	2,9	4	180	1 1/2"	8	130	81	180	131	101	1 1/2"
25/60 180	CI-PC25/60-180	3,3	6	180	1 1/2"	8	130	81	180	131	101	1 1/2"
15/60 130	CI-PC15/60-130 BS **	2,9	6	130	1"	8	130	81	130	131	101	1"
25/60 130	CI-PC25/60-130	3,3	6	130	1 1/2"	8	130	81	130	131	101	1 1/2"
25/60 130	CI-PC25/60-130 BPS*	3,3	6	130	1 1/2"	8	130	81	130	131	101	1 1/2"
25/80 180	CI-PC25/80-180	6,9	8	180	1 1/2"	4	130	81	180	131	101	1 1/2"
32/80 180	CI-PC32/80-180	9,6	8	180	2"	4	130	81	180	131	101	2"

\* without electric cable and without half-unions \*\* without half-unions

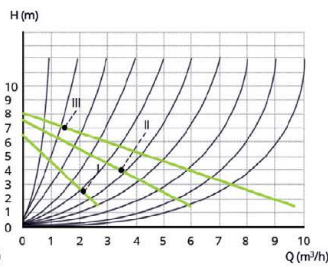
CI-PC 25/40-180



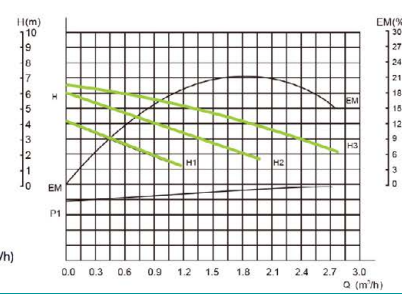
CI-PC 25/60-130, CI-PC 25/60-180



CI-PC 25/80-180, CI-PC 32/80-180



CI-PC 15/60-130



**ELECTRONIC CIRCULATION PUMPS**

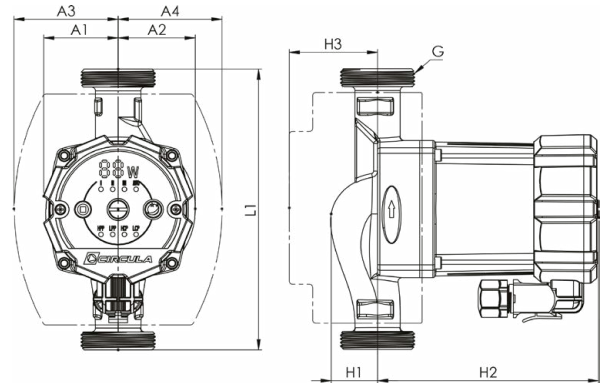
**MERCURIO PUMP**

An innovative inspection sleeve positioned along the shaft axis enables additional venting and provides an emergency rotor start-up function

230V~50Hz, IP44, TF 110°C  
class F, PN10

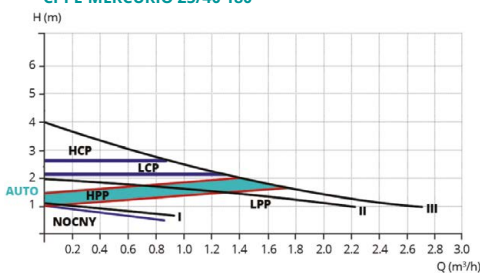
Energy Efficiency Index: EEI ≤0,20

- Included:
- half-unions
  - biodegradable foam
  - power cable with plug

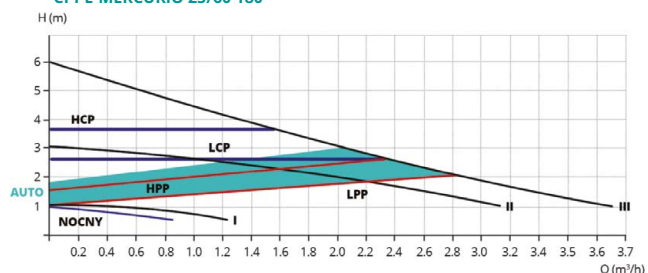


type	code	power (W)	maximum flow (m³/h)	max. lifting height [m]	mounting length (mm)	connected diameter of the body [inch]	pcs / box	L1	A1	A2	A3	A4	H1	H2	H3	G
25/40 180	CI-PE-MERCURIO 25/40	5-22	2,6	4	180	1 1/2"	8	180	47	49	67	67	30	140	57	1 1/2"
25/60 180	CI-PE-MERCURIO 25/60	5-45	3,6	6	180	1 1/2"	8	180	47	49	67	67	30	140	57	1 1/2"

CI-PE-MERCURIO 25/40 180



CI-PE-MERCURIO 25/60 180



**HELIO PUMP**

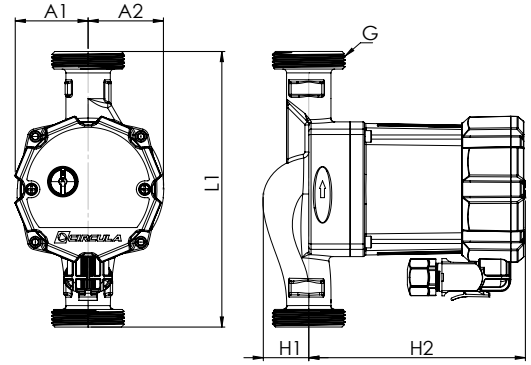
230V~50Hz, IP44, Tmax 95°C

class F, PN10

Energy Efficiency Index:  
EEI ≤ 0.20

included:

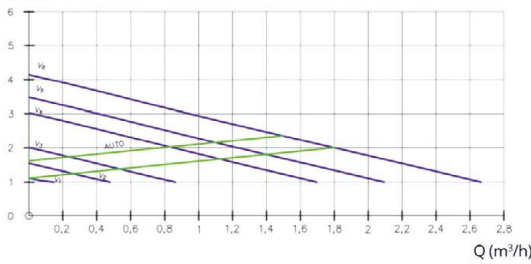
- power cable with plug
- gaskets
- half-unions



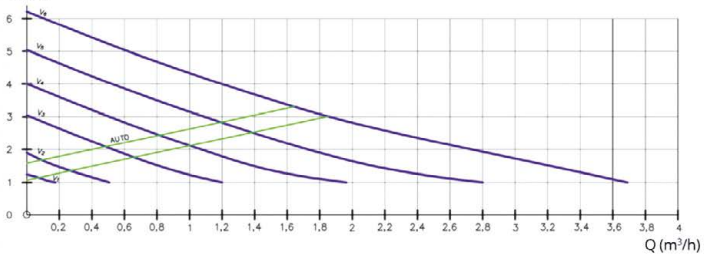
type	code	pcs / box
25/60 130	CI-HELIO 25/60-130	8
25/40 180	CI-HELIO 25/40-180	8
25/60 180	CI-HELIO 25/60-180	8

L1	A1	A2	H1	H2	G
130	47	49	30	140	1 1/2
180	47	49	30	140	1 1/2
180	47	49	30	140	1 1/2

H (m) CI-HELIO 25/40-180



H (m) CI-HELIO 25/60-130, CI-HELIO 25/60-180



**TITANIO PUMP**

Auto-venting function and motor start-up support

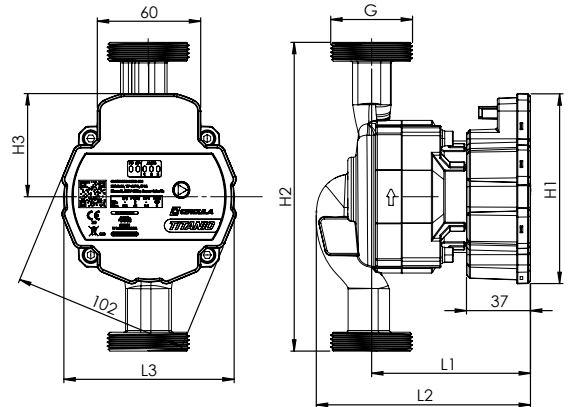
featuring a PWM control input

230V~50Hz, IP44, TF 95°C  
class E, PN10

Energy Efficiency Index:  
EEI ≤ 0.20

included:

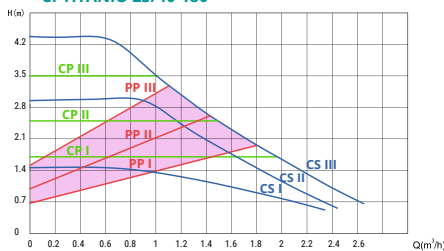
- electric cable without plug
- gaskets
- half-unions



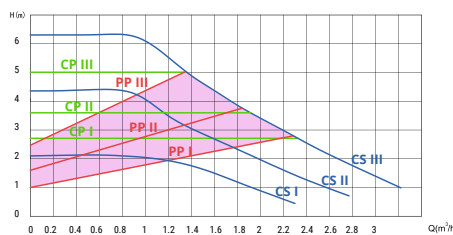
type	code	pcs / box
25/40 180	CI-TITANIO 25/40-180	8
25/60 130	CI-TITANIO 25/60-130	8
25/60 180	CI-TITANIO 25/60-180	8
25/80 130	CI-TITANIO 25/80-130	8
25/80 180	CI-TITANIO 25/80-180	8
15/60 130	CI-TITANIO 15/60-130	8
32/80 180	CI-TITANIO 32/80-180	8

L1	L2	L3	H1	H2	H3	G
93	126	99	110	180	60	1 1/2"
93	126	99	110	130	60	1 1/2"
93	126	99	110	180	60	1 1/2"
93	126	99	110	130	60	1 1/2"
93	126	99	110	180	60	1 1/2"
93	126	99	110	130	60	1"
93	126	99	110	180	60	2"

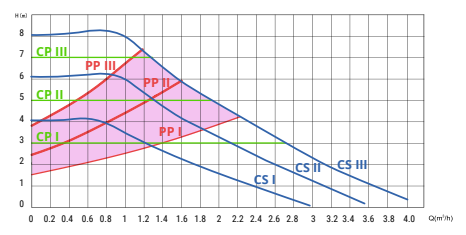
CI-TITANIO 25/40-180



CI-TITANIO 25/60, CI-TITANIO 15/60



CI-TITANIO 25/80, CI-TITANIO 32/80



- **PP** (proportional pressure curve)
- **CP** (constant pressure curve)
- **CS** (constant curve)
- **AUTO**

## TITANIO PRO PUMP

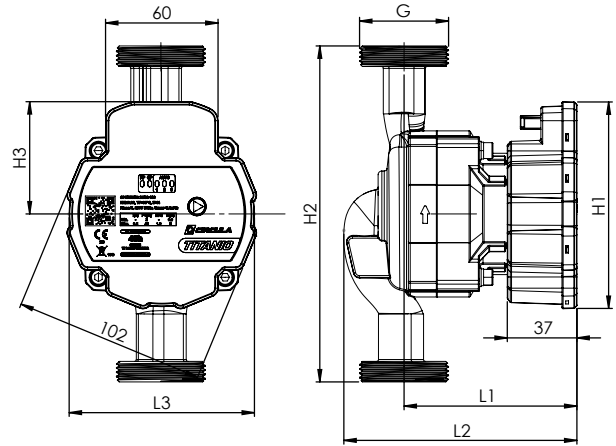
Auto-venting function  
and motor start-up support  
featuring a PWM control input

230V~50Hz, IP 44, TF 110°C  
class F, PN10

Energy Efficiency Index: EEI  $\leq 0,21$

included:

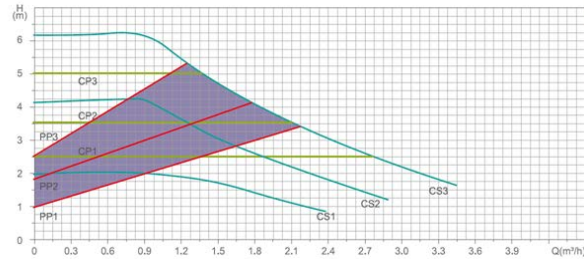
- electric cable without plug
- gaskets
- half-unions



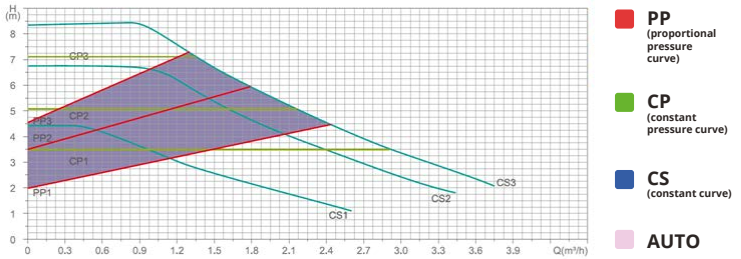
type	code	pcs / box
25/60-130	CI-TIT-PRO 25/60-130	8
25/60-180	CI-TIT-PRO 25/60-180	8
25/80-180	CI-TIT-PRO 25/80-180	8

L1	L2	L3	H1	H2	H3	G
94	127	103	112	130	60	1 1/2"
94	127	103	112	180	60	1 1/2"
94	127	103	112	180	60	1 1/2"

### CI-TIT-PRO 25/60-180, CI-TIT-PRO 25/60-130



### CI-TIT-PRO 25/80-180



## GALIO PUMP

Auto-venting function  
and motor start-up support

LED display

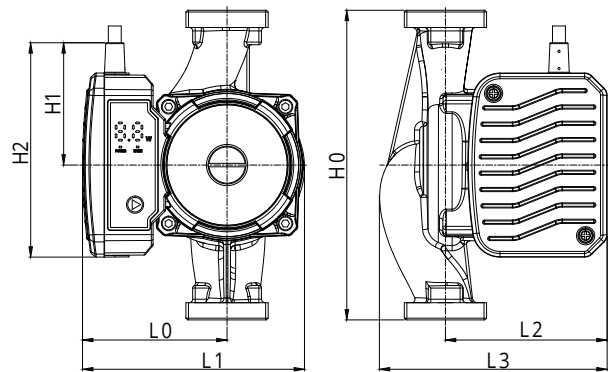
230V~50Hz, IP44, TF 110°C

class E, PN10

Energy Efficiency Index: EEI  $\leq 0,21$

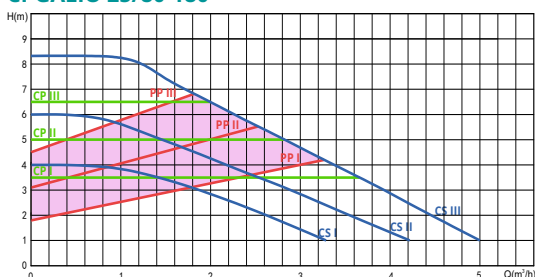
included:

- half-unions
- power cable with plug

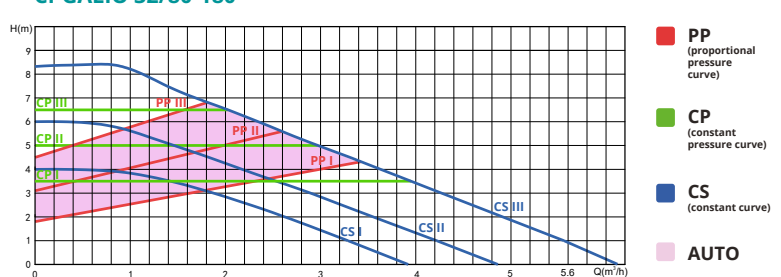


type	code	power (W)	maximum flow (m <sup>3</sup> /h)	max. lifting height [m]	connected diameter of the body [inch]	pcs / box	L0	L1	L2	L3	H0	H1	H2
25/80-180	CI-GALIO 25/80-180	80	5	0,3-8	1 1/2"	8	84	130	94	132	180	71	125
32/80-180	CI-GALIO 32/80-180	80	6	0,3-8	2"	8	84	130	94	132	180	71	125

### CI-GALIO 25/80-180



### CI-GALIO 32/80-180

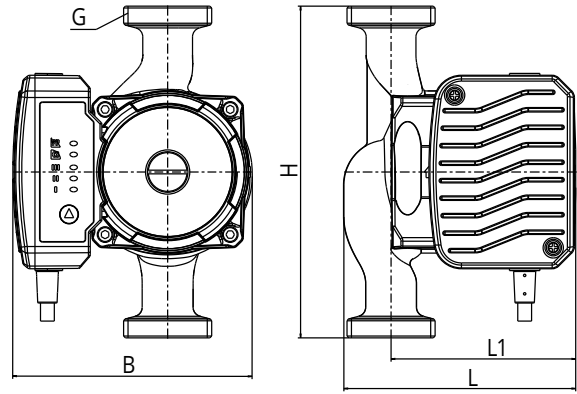


**SELENIO PUMP**

Auto-venting function and motor start-up support  
 230V~50Hz, IP44, TF 110°C  
 class F, PN10

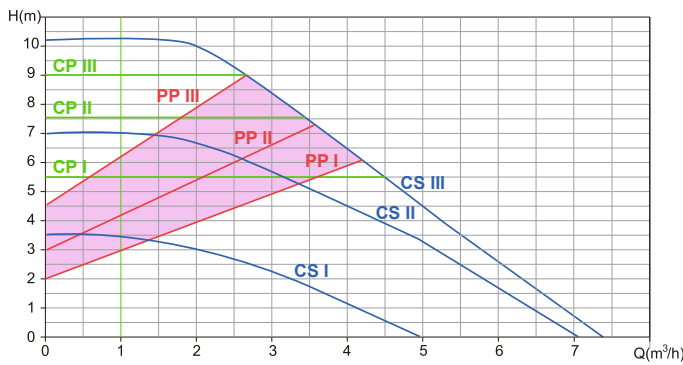
Energy Efficiency Index:  $EEL \leq 0.23$

- included:
- half-unions
  - power cable with plug

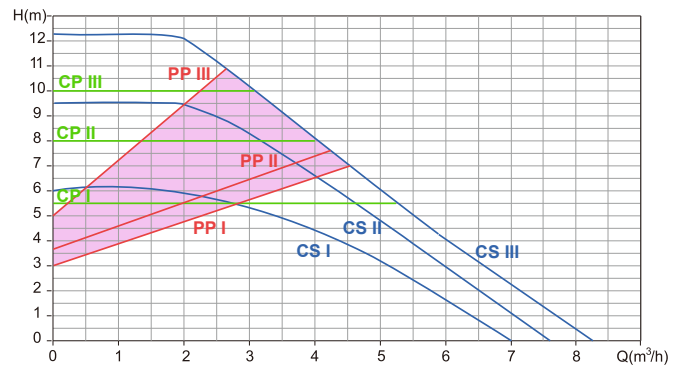


type	code	power (W)	maximum flow (m³/h)	max. lifting height [m]	connected diameter of the body [inch]	pcs / box	L	L1	H	B	G
25/100 180	CI-SELEN 25/100-180	140	7,5	0 - 10	1 1/2"	8	130	95	180	143	1 1/2"
32/100 180	CI-SELEN 32/100-180	140	8	0 - 10	2"	8	130	95	180	143	2"
25/120 180	CI-SELEN 25/120-180	180	8,5	0 - 12	1 1/2"	8	130	95	180	143	1 1/2"
32/120 180	CI-SELEN 32/120-180	180	9	0 - 12	2"	8	130	95	180	143	2"

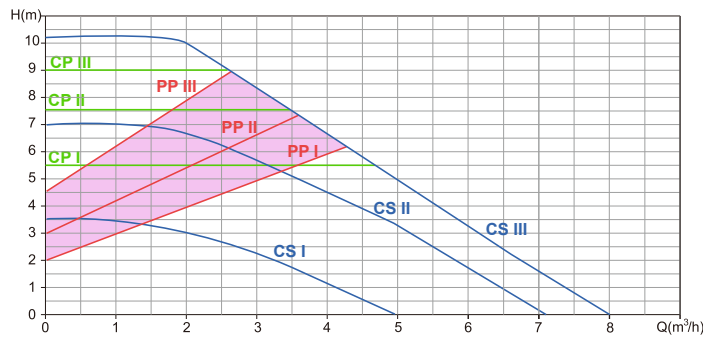
**CI-SELEN 25/100-180**



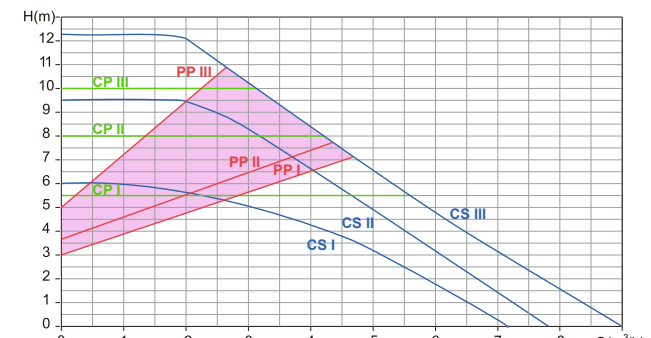
**CI-SELEN 25/120-180**



**CI-SELEN 32/100-180**



**CI-SELEN 32/120-180**



- **PP**  
(proportional pressure curve)
- **CP**  
(constant pressure curve)
- **CS**  
(constant curve)
- **AUTO**

**PALADIO PUMP**

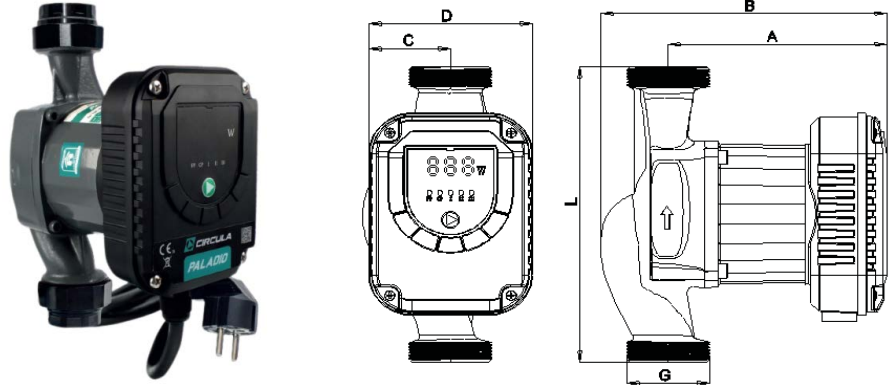
auto-venting function

230V~50Hz, IP 44, TF 95°C  
class F, PN10

Energy efficiency index: EEI ≤0.21

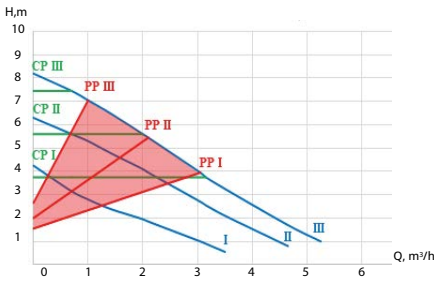
Included:

- half-unions
- power cable with plug

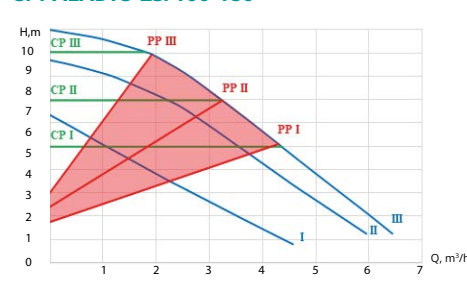


type	code	power	maximum flow	maximum lifting height (m)	body connection diameter (inch)	pieces in box	A	B	C	D	L
25/80 180	CI-PALADIO25/80-180	63	5,2	0 - 8	1 1/2"	8	124.5	163	46.5	93	180
25/100 180	CI-PALADIO25/100-180	120	6,1	0 - 10	1 1/2"	8	124.5	163	46.5	93	180
25/120 180	CI-PALADIO25/120-180	150	7,5	0 - 12	1 1/2"	8	124.5	163	46.5	93	180
32/80 180	CI-PALADIO32/80-180	63	5,2	0 - 8	2"	8	124.5	163	46.5	93	180
32/100 180	CI-PALADIO32/100-180	120	6,1	0 - 10	2"	8	124.5	163	46.5	93	180
32/120 180	CI-PALADIO32/120-180	150	7,8	0 - 12	2"	8	124.5	163	46.5	93	180

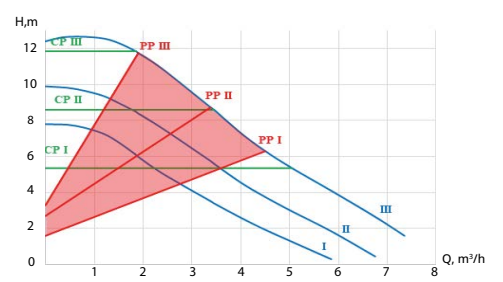
**CI-PALADIO 25/80-180**



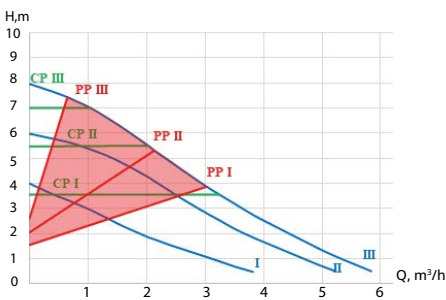
**CI-PALADIO 25/100-180**



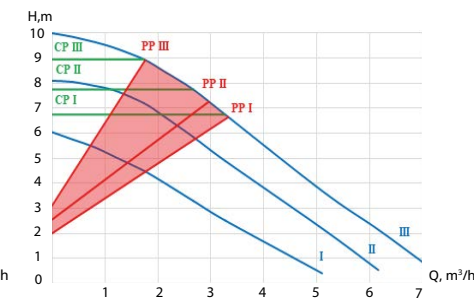
**CI-PALADIO 25/120-180**



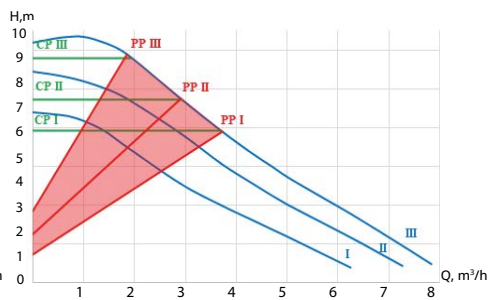
**CI-PALADIO 32/80-180**



**CI-PALADIO 32/100-180**



**CI-PALADIO 32/120-180**



- **PP**  
(proportional pressure curve)
- **CP**  
(constant pressure curve)
- **CS**  
(constant curve)
- **AUTO**

# 6

## Measuring instruments

---



Radial thermomanometer  
**Calido**

- Clear measurement dial
- Accurate readings
- Stainless steel housing

WATER METER

POWOGAZ



code	parameters
PO-WNS1,6CW DN15	1,6 CW, DN15
PO-WNS1,6ZW DN15	1,6 ZW, DN15
PO-WNS2,5CW DN15	2,5 CW, DN15
PO-WNS2,5ZW DN15	2,5 ZW, DN15
PO-WNS4,0CW DN20	4,0 CW, DN20
PO-WNS4,0ZW DN20	4,0 ZW, DN20

WATER METER INSTALLATION CONSOLES

WATER METER CONSOLE

stainless steel, 1.4301 (AISI 304)



dimension	code	parameters
3/4"	CA/KW-DN15-SN	10 bar, 110°C
1"	CA/KW-DN20-SN	10 bar, 110°C

WATER METER CONSOLE

DC01 steel, coated with a paint layer



dimension	code	parameters
3/4"	CA/KW-DN15	10 bar, 110°C
1"	CA/KW-DN20	10 bar, 110°C

MANOMETERS

RADIAL



dimension	code	parameters
Ø63 mm, G 1/4"	CA-PP-MR1	1 bar
	CA-PP-MR1,6	1,6 bar
	CA-PP-MR2,5	2,5 bar
	CA-PP-MR4	4 bar
	CA-PP-MR6	6 bar
	CA-PP-MR10	10 bar

REAR



dimension	code	parameters
Ø63 mm, G 1/4"	CA-PP-MT2,5	2,5 bar
	CA-PP-MT4	4 bar
	CA-PP-MT6	6 bar
	CA-PP-MT10	10 bar

REAR



dimension	code	parameters
Ø40 mm, G 1/8"	CA-PP-MT6-40MM	6 bar

**THERMOMANOMETERS**

**REAR**



dimension	code	parameters
Ø80 mm, G 1/2"	CA-PP-TMT4	4 bar, 120°C

**RADIAL**



dimension	code	parameters
Ø80 mm, G 1/2"	CA-PP-TMR4	4 bar, 120°C

**THERMOMETERS**

**BIMETALLIC REAR**



dimension	code	parameters
Ø63 mm, G 1/2", L 45 mm	CA-PP-TBT	120°C

**BIMETALLIC RADIAL**



dimension	code	parameters
Ø63 mm, L 50	CA-PP-TBR	120°C

**BIMETALLIC SURFACE-MOUNT**



dimension	code	parameters
Ø63 mm, G 1/2"	CA-PP-TBP	120°C

**CAPILLARY**



dimension	code	parameters
Ø52 mm, DN 6 mm	PR-T52P	L1000

**STRAIGHT**



dimension	code	parameters
1/2"	PR-TP15/110	110°C
3/4"	PR-TP20/110	110°C

**TEMPERATURE SENSOR POCKET**



dimension	code	parameters
1/2" x L100 mm	PR-KIESZ.CZUJNIKA	-



7

SPARE PARTS





Valve handles  
**Calido**

- Plastic cover
- Anti-corrosion layer - INOX
- Handle with window and label

## SPARE PARTS FOR S30 SERIES VALVES

## LEVER FOR S30 VALVE



size	code	pcs / pack	pcs / box
1/4", 3/8"	CA/ZK-A-R08-10	1	-
1/2", 3/4"	CA/ZK-A-R15-20	1	-
1", 1 1/4"	CA/ZK-A-R25-32	1	-
1 1/2", 2"	CA/ZK-A-R40-50	1	-
2 1/2"	CA/ZK-A-R65	1	-
3", 4"	CA/ZK-A-R80-100	1	-

## LEVER FOR S30 VALVE



size	code	pcs / pack	pcs / box
1" - 1 1/4"	CA/ZK-A-RN25-32	1	-
1/2" - 3/4"	CA/ZK-A-RN15-20	1	-

## LEVER FOR S30 VALVE

butterfly type



size	code	pcs / pack	pcs / box
1/4", 3/8", 1/2", 3/4"	CA/ZK-A-M08-20	1	-
1"	CA/ZK-A-M25	1	-

## LEVER FOR S30 VALVE

butterfly type



size	code	pcs / pack	pcs / box
1/4", 3/8", 1/2", 3/4"	CA/ZK-A-MN15-20	1	-
1"	CA/ZK-A-MN25	1	-

SPARE PARTS FOR S30 N SERIES VALVES

LEVER FOR S30N VALVE



size	code	pcs / pack	pcs / box
1/4"-3/8"	CA/ZKN-A-RCZ08-10	1	-
1/2"-3/4"	CA/ZKN-A-RCZ15-20	1	-
1"-1 1/4"	CA/ZKN-A-RCZ25-32	1	-
1 1/2"-2"	CA/ZKN-A-RCZ40-50	1	-

LEVER FOR S30N VALVE



size	code	pcs / pack	pcs / box
1/4"-3/8"	CA/ZKN-A-RN08-10	1	-
1/2"-3/4"	CA/ZKN-A-RN15-20	1	-
1"-1 1/4"	CA/ZKN-A-RN25-32	1	-
1 1/2"-2"	CA/ZKN-A-RN40-50	1	-

LEVER FOR S30N VALVE

butterfly type



size	code	pcs / pack	pcs / box
1/2"-3/4"	CA/ZKN-A-MCZ15-20	1	-
1"	CA/ZKN-A-MCZ25	1	-

LEVER FOR S30N VALVE

butterfly type



size	code	pcs / pack	pcs / box
1/2"-3/4"	CA/ZKN-A-MN15-20	1	-
1"	CA/ZKN-A-MN25	1	-

## SPARE PARTS

## BASKET FOR FILTER VALVE



size	code	pcs / pack	pcs / box
1/2"	CA/ZK-A-F1/2	1	-
3/4"	CA/ZK-A-F3/4	1	-
1"	CA/ZK-A-F1	1	-

## GASKET FOR FILTER



size	code	pcs / pack	pcs / box
1/2"	CA/ZK-A-UF1/2	10	-
3/4"	CA/ZK-A-UF3/4	10	-
1"	CA/ZK-A-UF1	10	-

## O-RING FOR HALF-UNION



size	code	pcs / pack	pcs / box
1/2" (Ø20x2)	CA/ZK-A-UP1/2	10	-
3/4" (Ø24x2.4)	CA/ZK-A-UP3/4	10	-
1" (Ø33x2.5)	CA/ZK-A-UP1	10	-

## GASKET FOR VALVE



size	code	pcs / pack	pcs / box
18,5 x 12,5 - 2,0 mm	CA/ZK-A-UZ15	10	-
24 x 16 - 2,0 mm	CA/ZK-A-UZ20	10	-
30 x 22 - 2,0 mm	CA/ZK-A-UZ25	10	-
39 x 30 - 2,0 mm	CA/ZK-A-UZ32	10	-

## GAS HOSE GASKET



size	code	pcs / pack	pcs / box
1/2"	CA-A-UWG15	10	-
3/4"	CA-A-UWG20	10	-

## O-RING FOR COPPER FITTINGS

press-fit for water



size	code	pcs / pack	pcs / box
15,1 x 2,7 mm	CA/OZM-15-OPAK	10	-
18,2 x 2,6 mm	CA/OZM-18-OPAK	10	-
22 x 3,2 mm	CA/OZM-22-OPAK	10	-
28 x 3,0 mm	CA/OZM-28-OPAK	10	-
35 x 3,1 mm	CA/OZM-35-OPAK	10	-

## SPARE PARTS FOR STRAIGHT GAS FILTERS

## FILTER CARTRIDGE



size	code	pcs / pack	pcs / box
1/2"	CG/FGK-15	1	20
3/4"	CG/FGK-20	1	50
1"	CG/FGK-25	1	10
1 1/4"	CG/FGK-32	1	2

## SPARE PARTS FOR GARDEN SERIES VALVES

## VALVE LEVER

stainless steel



size	code	pcs / pack
1/2", 3/4"	CA/ZK-A-RCZ1/2-3/4	1

## QUICK-COUPLING CONNECTOR



size	code	pcs / pack	pcs / box
3/4" x 15	CA/ZK-A-S	1	200

## HOSE CONNECTOR



size	code	pcs / pack	pcs / box
3/4" x 15	CA/ZK-A-ZW3/4X15	1	100
3/4" x 20	CA/ZK-A-ZW3/4X20	1	200

## HOSE CONNECTOR

brass



size	code	pcs / pack	pcs / box
3/4" x 15	CA/ZK-A-MS3/4	1	48

## SPARE PARTS FOR DRAIN VALVES

## CAP

for drain valves



size	code	pcs / pack	pcs / box
1/2	CA/ZK-A-ZS15	1	-
3/4	CA/ZK-A-ZS20	1	-

## SPARE PARTS FOR RADIATOR VALVES

## KNOB WITH SCREW

for supply valve



size	code	pcs / pack	pcs / box
-	CA/ZG-A-P	1	-

## STEM REPAIR KIT

for supply valve



size	code	pcs / pack	pcs / box
-	CA/ZG-A-ZNZ	1	-

## STEM REPAIR KIT

for return valve



size	code	pcs / pack	pcs / box
-	CA/ZG-A-ZNP	1	-

## HALF-UNION FOR ESKIMOS VALVES



size	code	pcs / pack	pcs / box
1/2"	CA/ZK-A-P15	1	240

## STEM O-RING

for supply valve and return valve



size	code	pcs / pack	pcs / box
12 x 1,8	CA/ZG-A-OT	10	-

## PLUG WITH A SEAL

for return valve



size	code	pcs / pack	pcs / box
1/2"	CA/ZG-A-ZZP	1	-

## PLUG SEAL

for return valve



size	code	pcs / pack	pcs / box
-	CA/ZG-A-UZP	10	-

**BRIDGE**

for bottom radiator connections  
(multiple use)



size	code	pcs / pack	pcs / box
-	CA/ZG-A-MPDG	1	-

**RADIATOR HANGER SET**

made of painted steel



size	code	pcs / pack	pcs / box
-	CA/ZG-ZWG	2	100

**RADIATOR HANGER**

for bottom radiator connections  
(multiple use)



size	code	pcs / pack	pcs / box
-	CA/ZG-A-WG1	1	100

**RADIATOR HANGER**

for bottom radiator connections  
(multiple use)



size	code	pcs / pack	pcs / box
-	CA/ZG-A-WG2	2	100

**REDUCTION IN RADIATOR PLUG**

made of painted steel



size	description	code	PN	T max:	pcs / pack	pcs / box
1" x 1/2"	left	CA/ZG-RKG2515L	10 bar	90°C	1	200
1" x 1/2"	right	CA/ZG-RKG2515P	10 bar	90°C	1	200

**RADIATOR PLUG**

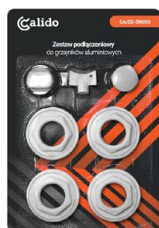
made of painted steel



size	description	code	PN	T max:	pcs / pack	pcs / box
1"	left	CA/ZG-KG25L	10 bar	90°C	1	200
1"	right	CA/ZG-KG25P	10 bar	90°C	1	200

**CONNECTION SET FOR ALUMINUM RADIATORS**

reduction made of painted steel,  
plug made of CW617N brass, nickel-  
plated, radiator air vent made of CW617N  
brass, nickel-plated, and a plastic key



code	PN	T max	pcs / pack	pcs / box
CA/ZG-ZRKO	10 bar	90°C	1	40

**RADIATOR AIR VENT**

made of CW617N brass, nickel-plated, key-operated



code	size	PN	T max	pcs / pack	pcs / box
CA/ZG-ODPGK15-OPAK	1/2"	10 bar	90°C	10	100

**RADIATOR AIR VENT**

made of CW617N brass, nickel-plated, knob-operated



code	size	PN	T max	pcs / pack	pcs / box
CA/ZG-ODPGP15-OPAK	1/2"	10 bar	90°C	10	80

**RADIATOR CAPS AND NIPPLES****RADIATOR PLUG**

made of CW617N brass, nickel-plated, with O-ring, white



code	size	PN	T max	pcs / pack	pcs / box
CA/ZG-KG15B-O-OPAK	1/2"	10 bar	90°C	10	100

**RADIATOR PLUG**

made of CW617N brass, nickel-plated, with O-ring, chrome



code	size	PN	T max	pcs / pack	pcs / box
CA/ZG-KG15CH-O-OPAK	1/2"	10 bar	90°C	10	80

**ALUMINIUM RADIATOR NIPPLE**

made of galvanized steel



code	size	PN	T max	pcs / pack	pcs / box
CA/ZG-NGA25-OPAK	1"	10 bar	90°C	10	40

**KEYS FOR THE AIR VENT****AIR VENT KEY**

metal made of zamak – zinc alloy with aluminum



description	code	pcs / pack	pcs / box
-	CA/ZG-KOM-OPAK	10	250

**AIR VENT KEY**

made of plastic



description	code	pcs / pack	pcs / box
-	CA/ZG-KOP-OPAK	10	500

**VENT KEY**

keychain



description	code	pcs / pack
-	CA/ZG-A-KO	-

## SPARE PARTS FOR ANGLE VALVES

## CAP PLUG WITH GASKET



size	code	pcs / pack	pcs / box
3/4"	D/ZK-A-Z	1	-

## ADAPTER WITH GASKET



size	code	pcs / pack	pcs / box
3/4" x 3/8"	D/ZK-A-A	1	-

## ANTI-SCALE FILTER



size	code	pcs / pack	pcs / box
-	D/ZK-A-F	1	-

## SPARE PARTS FOR SMART ANGLE VALVES WITH FILTER

## FILTER



size	code	pcs / pack	pcs / box
-	D/ZK-A-SMART-F	1	-

## PLUG

with gasket



size	code	pcs / pack	pcs / box
-	D/ZK-A-SMART-Z	1	-

## SPARE PARTS FOR CAST-IRON STRAIGHT VALVES

## VALVE HEAD

brass body, steel knob



size	code	pcs / pack	pcs / box
1/2"	D/Z-GZ15	40	160
3/4"	D/Z-GZ20	20	80
1"	D/Z-GZ25	15	60
1 1/4"	D/Z-GZ32	8	32
1 1/2"	D/Z-GZ40	8	32
2"	D/Z-GZ50	4	16

## ACCESSORIES FOR CONNECTORS

## UNION SEAL



size	code	pcs / pack	pcs / box
1/2"	GU-USZ.SR.1/2	-	100
3/4"	GU-USZ.SR.3/4	-	100
1"	GU-USZ.SR.1	-	100
1 1/4"	GU-USZ.SR.1.1/4	-	100
1 1/2"	GU-USZ.SR.1.1/2	-	100
2"	GU-USZ.SR.2	-	100
2 1/2"	GU-USZ.SR.2.1/2"	-	100
3"	GU-USZ.SR.3	-	50
4"	GU-USZ.SR.4	-	35

## AIR VENTS

## AUTOMATIC AIR VENT

with stop valve,  
double protection

size	code	Maximum temperature	Nominal temperature	Maximum pressure	pcs / box
1/2"	CA/A-ODP-15	120°C	90°C	10 bar	100

## AUTOMATIC AIR VENT

with stop valve,  
double protection

size	code	Maximum temperature	Nominal temperature	Maximum pressure	pcs / box
1/2"	CA/A-ODP-15-CZ	120°C	90°C	10 bar	100

## AUTOMATIC AIR VENT

with stop valve,  
double protection

size	code	Maximum temperature	Nominal temperature	Maximum pressure	pcs / box
1/2"	CA/A-ODP-15-B	120°C	90°C	10 bar	100

## SPARE PARTS FOR ANGLED WATER FILTER

## MESH BASKET FOR FILTER

stainless steel



size	code	pcs / pack	pcs / box
1/2"	CA/KFSW-15	1	-
3/4"	CA/KFSW-20	1	-
1"	CA/KFSW-25	1	-
1 1/4"	CA/KFSW-32	1	-
1 1/2"	CA/KFSW-40	1	-
2"	CA/KFSW-50	1	-

## MAGNETIC CARTRIDGE FOR FILTER



size	code	pcs / pack	pcs / box
1/2"	CA/WMF-15	1	20
3/4"	CA/WMF-20	1	15
1"	CA/WMF-25	1	12

## GASKET FOR FILTER



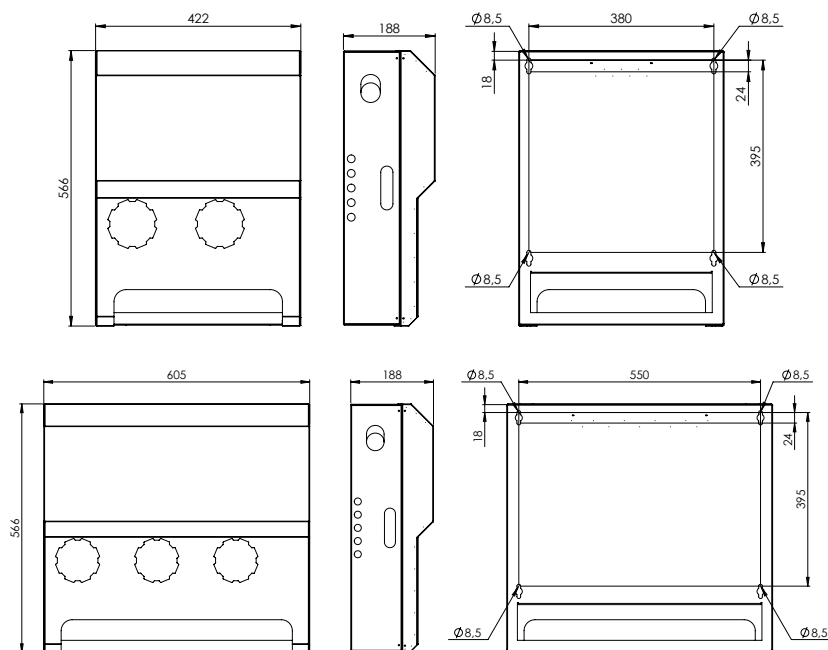
size	code	pcs / pack	pcs / box
1/2"	CA/UFSW-15-OPAK	10	-
3/4"	CA/UFSW-20-OPAK	10	-
1"	CA/UFSW-25-OPAK	10	-
1 1/4"	CA/UFSW-32-OPAK	10	-
1 1/2"	CA/UFSW-40-OPAK	10	-
2"	CA/UFSW-50-OPAK	10	-

## SPARE PARTS FOR PUMP GROUPS

### CABINET FOR PUMP GROUP

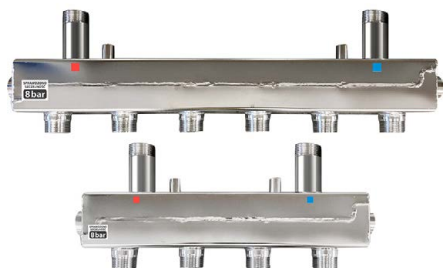


Available cabinet colors:



type	code	pcs / pack	pcs / box
2-SECTION	D/S-GP-A-SZAFKA 2S	-	1
3-SECTION	D/S-GP-A-SZAFKA 3S	-	1

### MANIFOLD FOR PUMP GROUP



type	code	pcs / pack	pcs / box
2-SECTION	D/S-GPRT-A-R 2S	-	1
3-SECTION	D/S-GPRT-A-R 3S	-	1

### HYDRAULIC SEPARATOR - MANIFOLD FOR PUMP GROUP



type	code	pcs / pack	pcs / box
2-SECTION	D/S-GPT-A-SR 2S	-	1
3-SECTION	D/S-GPT-A-SR 3S	-	1

### WALL MOUNT FOR MANIFOLD / HYDRAULIC SEPARATOR-MANIFOLD



type	description	code	pcs / box
2-SECTION	for mounting the manifold / hydraulic separator-manifold Set includes: 3 wall plugs, 2 screws, 2 washers	D/S-A-URSR-2S	1

## WALL MOUNT FOR MANIFOLD / HYDRAULIC SEPARATOR-MANIFOLD



type	description	code	pcs / box
3-SECTION	for mounting the manifold / hydraulic separator-manifold Set includes: 3 wall plugs, 2 screws, 2 washers	D/S-A-URSR-3S	1

## ACCESSORIES FOR CABINETS

## GUIDE RAIL FOR CONCEALED CABINET



description	code	pcs / box
the set includes 1 guide rail, 4 nuts, 4 washers, 4 screws	D/S-P-SIP	1

## GUIDE RAIL FOR SURFACE-MOUNTED CABINET



description	code	pcs / box
the set includes 1 guide rail, 4 nuts, 4 washers, 4 screws	D/S-P-SIN	1

## ACCESSORIES FOR MIXING SYSTEMS

## TWO-SIDED SWIVEL UNION

nickel-plated brass M/M

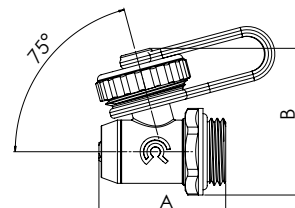


size	code	pcs / box
1"	CA/KG-DLO-ZZ25	120

## ACCESSORIES FOR MANIFOLD

## DRAIN VALVE M

for manifolds

**T max instantaneous 130°C****PN 16 bar**

size	code	A (mm)	B (mm)	pcs / pack	pcs / box
1/2"	CA/ZS-RN15	39	45	20	120

**MANIFOLD BAR**regulating valves  
blue knobs

number of sections	code
R-3	D/S-RN-ZR-B3-N
R-4	D/S-RN-ZR-B4-N
R-5	D/S-RN-ZR-B5-N
R-6	D/S-RN-ZR-B6-N
R-7	D/S-RN-ZR-B7-N
R-8	D/S-RN-ZR-B8-N
R-9	D/S-RN-ZR-B9-N
R-10	D/S-RN-ZR-B10-N
R-11	D/S-RN-ZR-B11-N
R-12	D/S-RN-ZR-B12-N
R-13	D/S-RN-ZR-B13-N

**MANIFOLD BAR**regulating valves  
red knobs

number of sections	code
R-3	D/S-RN-ZR-B3-CZ
R-4	D/S-RN-ZR-B4-CZ
R-5	D/S-RN-ZR-B5-CZ
R-6	D/S-RN-ZR-B6-CZ
R-7	D/S-RN-ZR-B7-CZ
R-8	D/S-RN-ZR-B8-CZ
R-9	D/S-RN-ZR-B9-CZ
R-10	D/S-RN-ZR-B10-CZ
R-11	D/S-RN-ZR-B11-CZ
R-12	D/S-RN-ZR-B12-CZ
R-13	D/S-RN-ZR-B13-CZ

**MANIFOLD BRACKETS**

description	code	pcs / box
brackets - for manifold, adjustable (2 pieces)	D/S-A-UR	40

**PLUG**

description	size	code	pcs / box
brass	1"	D/S-A-KR25	336

**NIPPLE**for thermostatic insert  
in OP manifolds (bottom bar)

description	size	code	pcs / box
short, with O-ring	1/2" x 3/4"	D/S-A-NKR1520	288

**NIPPLE**

for use with regulating valves



description	size	code	pcs / box
short, PTFE sealing	1/2" x 3/4"	D/S-A-NKRB1520	288

**NIPPLE**

for flow meter



description	size	code	pcs / box
long, with O-ring	1/2" x 3/4"	D/S-A-NDR1520	288

**REDUCING NIPPLE**

description	code	pcs / box
1/2" x 3/4" for radiator connection and manifold (for eurocone)	IC-87217LC06	200

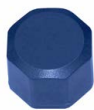
**FLOW METER**

description	size	code	pcs / box
flow and adjustment range 0-3 l/min.	1/2"	D/S-A-PR15	200

**FLOW METER SIGHT GLASS**

scale range	code	pcs / box
0-3 l/min.	D/S-A-WP	500

## KNOB FOR THERMOSTATIC INSERT



description	size	code	pcs / box
blue	M30 x 1,5	D/S-A-PNR	600

## KNOB FOR REGULATING VALVE



description	size	code	pcs / box
red, with screw	-	D/S-A-PRCS	600
blue, with screw	-	D/S-A-PRNS	600

## INSERT



description	size	code	pcs / box
thermostatic, with O-ring	1/2"	D/S-A-WTR15	200

## INSERT



description	size	code	pcs / box
adjusting	1/2"	D/S-A-WRR15	300

## ACCESSORIES FOR PRESS FITTINGS

## SLEEVE FOR PRESS FITTING



size	code	pcs / box
16 x 2	IC-C10400GH01	150
20 x 2	IC-C10400BQ01	150
25 x 2,5	IC-C10400GO01	100
26 x 3	IC-C10400GP01	50
32 x 3	IC-C10400GQ01	50

## RING FOR PRESS FITTING



size	code	pcs / box
16 x 2	IC-C22400GH250	150
20 x 2	IC-C22400BQ250	150
25 x 2,5-26 x3	IC-C22400GP250	150
32 x 3	IC-C22400GQ250	50

## ACCESSORIES FOR PUMPS

## PUMP UNION SET



description	code	pcs / bag
1 1/2" x 1"	CI-PPS-25x40	1 kpl.
1 1/4" x 2"	CI-PPS-50x32	1 kpl.

## GASKET FOR UNION PUMP



description	code	pcs / bag
1 1/2"	CI-UPS-1	10

## PLUG FOR ELECTRONIC PUMP PE



code	pcs / bag
CI-WPE	1

## PLUG FOR TORIO PUMP



code	pcs / bag
CI-WPT	1

### PLUG FOR MERCURIO TORIO AND PLATINO PUMP



code	pcs / bag
CI-WPM	1

### CABLE FOR TITANIO PUMP PWM

PWM cable 1 m (pulse-width modulation)



code	pcs / bag
CI-A-PWM	1

### CABLE FOR TITANIO PUMP PWP

1.5 m cable with plug for pump



code	pcs / bag
CI-A-PWP	1

# 8

## ISO Certificates and Patents





URZĄD PATENTOWY  
RZECZYPOSPOLITEJ POLSKIEJ

## DOKUMENT PATENTOWY

Na podstawie przepisów ustawy z dnia 30 czerwca 2000 r. Prawo własności przemysłowej (tekst jedn.: Dz.U. z 2017 r., poz. 776) został udzielony na rzecz:

ARKA SPÓŁKA Z OGRANICZONĄ ODPOWIEDZIALNOŚCIĄ  
SPÓŁKA KOMANDYTOWA, Sianów, Polska

## PATENT

NR **231282**

NA WYNALAZEK PT.

Zawór zwrotny

*przedstawiony w opisie patentowym  
włączonym do niniejszego dokumentu*

Patent trwa od dnia: **2016-12-01**

Warszawa, dnia 2019-02-20

Z upoważnienia Prezesa  
Urzędu Patentowego

*LC*  
Łukasz Kwaśniewski  
DYREKTOR DEPARTAMENTU

➤ ISO CERTIFICATE



Certificate No.  
NC-1814

# CERTIFICATE

Issued for:

 **ARKA**

**ARKA SPÓŁKA Z OGRANICZONĄ ODPOWIEDZIALNOŚCIĄ**

**ul. Ogrodowa 5  
76-004 Sianów**

Management Systems Certification Bureau of Polski Rejestr Statków S.A., al. gen. Józefa Hallera 126, 80-416 Gdańsk, certifies that the Quality Management System of the above organization has been assessed and found to be in accordance with the requirements of:

**ISO 9001:2015**

Scope of certification:

**DESIGN AND MANUFACTURE OF INSTALLATION CABINETS, PUMP  
GROUPS AND MANIFOLDS**

**DESIGNING AND SUPERVISING THE PRODUCTION OF OWN  
PRODUCTS OF SANITARY AND HEATING FITTINGS**

**WHOLESALE AND THE SERVICE OF THE FITTINGS AND HEATING**

Certificate first issue: **20.03.2009**

The Certificate is valid until: **18.03.2027**

Gdańsk, 19.03.2024



Certification Division Director  
Dariusz Denis

[www.prs.pl](http://www.prs.pl)

➤ PROTECTION CERTIFICATE NO. 228217



➤ PROTECTION CERTIFICATE NO. 228235



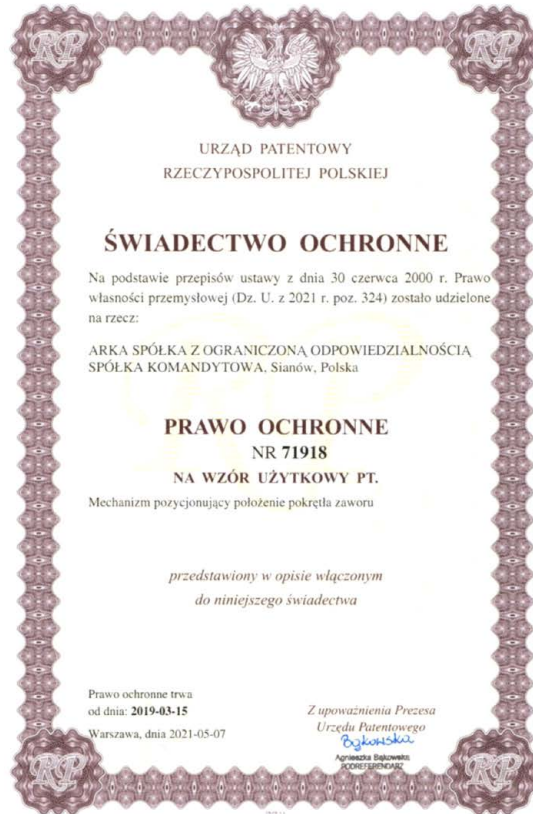
➤ PROTECTION CERTIFICATE NO. 228882



➤ PROTECTION CERTIFICATE NO. 228216



➤ PROTECTION CERTIFICATE NO. 71918



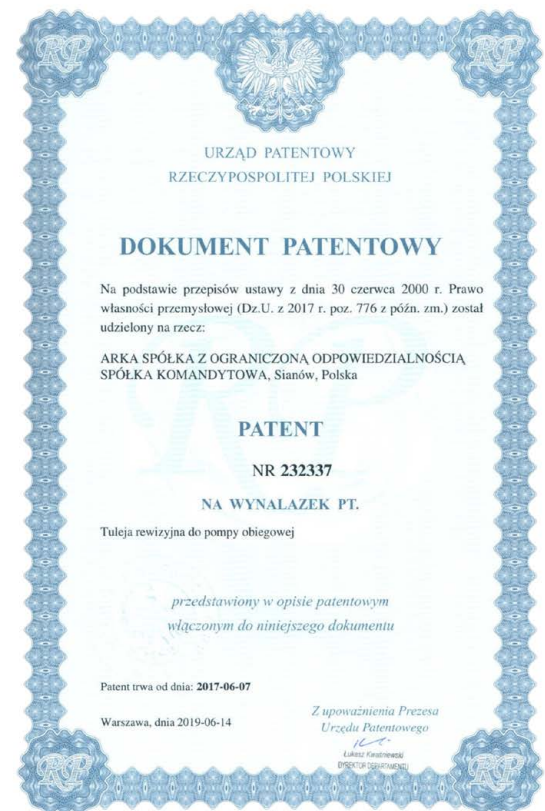
➤ PROTECTION CERTIFICATE NO. 230959



➤ PROTECTION CERTIFICATE NO. 231282



➤ PROTECTION CERTIFICATE NO. 232337



➤ PROTECTION CERTIFICATE NO. 73476



➤ PROTECTION CERTIFICATE NO. 244808







A large white rectangular area containing 25 horizontal grey lines, serving as a writing space.



Dystrybutor:

**Arka Sp. z o.o.**

Ogrodowa 5,

76-004 Sianów, Poland

**arka-instalacje.pl**

