

ZŁĄCZKI

Zaprasowywane do gazu Calido z miedzi i stopów miedzi PROFIL V



Przeznaczenie

Złączki zaprasowywane Calido do połączeń rur miedzianych przeznaczone są do budowy instalacji gazowych zgodnie z rozporządzeniem Ministra Infrastruktury z dnia 12 kwietnia 2002 r. w sprawie warunków technicznych, jakim powinny odpowiadać budynki i ich usytuowanie (Dz. U. 2022 poz. 1225 t.j.), zasilanych paliwami gazowymi wg PN-EN 437:2021-09.

Zalecenia montażowe i eksploatacyjne

Złączki posiadają co najmniej jedno połączenie zaprasowywane do łączenia z rurami miedzianymi R250 lub R290 wg PN-EN 1057+A1:2010. Końcówki zaprasowywane złączek przeznaczone są do stosowania szczęk zaciskowych o profilu V. Należy ściśle przestrzegać wytycznych zawartych w „Instrukcji montażu złączek o średnicach od 15 mm do 28 mm” Calido.

Dane techniczne

| | |
|------------------------------|------------------------------------|
| Medium | paliwa gazowe wg PN-EN 437:2021-09 |
| Maksymalne ciśnienie robocze | 5 bar |
| Temperatura pracy min. | -20°C |
| Temperatura pracy max. | 70°C |
| Materiał złączki | CW024A/CC499K |
| Uszczelnienie o-ring | HNBR TEC H16 GI-70 |

Znakowanie i certyfikacja

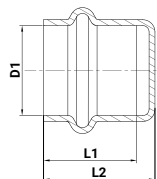


MOP 5 – maksymalne ciśnienie robocze,
GT/1 – odporność na wysoką temperaturę przy ciśnieniu 1 bar

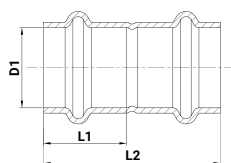


V – profil,
18 – rozmiar,
K20 – data produkcji

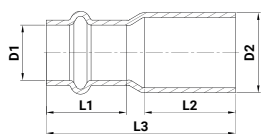
| | |
|--|---|
| Znakowanie |  |
| Krajowy certyfikat stałości właściwości użytkowych | wydane przez Instytut Nafty i Gazu – Państwowy Instytut Badawczy. |
| Krajowa Ocena Techniczna nr INiG-PIB-KOT-2025/0057 wydanie 2 | wydane przez Instytut Nafty i Gazu – Państwowy Instytut Badawczy. |

Zaślepki zaprasowywane do gazu


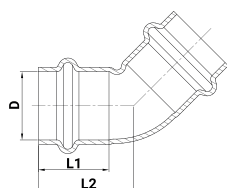
| Indeks | Rozmiar | øD1 [mm] | L1 [mm] | L2 [mm] |
|----------------|---------|----------|---------|---------|
| CA/ZMGV-300-15 | 15 | 15,2 | 22 | 25 |
| CA/ZMGV-300-18 | 18 | 18,2 | 22 | 25,5 |
| CA/ZMGV-300-22 | 22 | 22,2 | 23 | 27,5 |
| CA/ZMGV-300-28 | 28 | 28,2 | 24 | 28 |

Mufy zaprasowywane do gazu


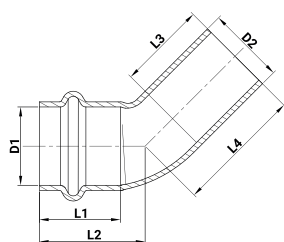
| Indeks | Rozmiar | øD1 [mm] | L1 [mm] | L2 [mm] |
|----------------|---------|----------|---------|---------|
| CA/ZMGV-270-15 | 15 | 15,2 | 22 | 46 |
| CA/ZMGV-270-18 | 18 | 18,2 | 22 | 47 |
| CA/ZMGV-270-22 | 22 | 22,2 | 23 | 49 |
| CA/ZMGV-270-28 | 28 | 28,2 | 24 | 50 |

Nypły redukcyjne zaprasowywane do gazu


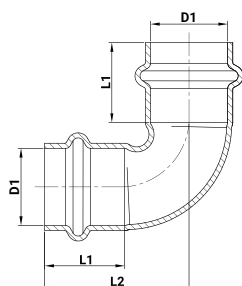
| Indeks | Rozmiar | øD1 [mm] | øD2 [mm] | L1 [mm] | L2 [mm] | L3 [mm] |
|------------------|---------|----------|----------|---------|---------|---------|
| CA/ZMGV-245-2215 | 22x15 | 15,2 | 22 | 22 | 25 | 52 |
| CA/ZMGV-245-2218 | 22x18 | 18,2 | 22 | 22 | 25 | 51 |
| CA/ZMGV-245-2815 | 28x15 | 15,2 | 28 | 22 | 25 | 57 |
| CA/ZMGV-245-2818 | 28x18 | 18,2 | 28 | 22 | 25 | 55 |
| CA/ZMGV-245-2822 | 28x22 | 22,2 | 28 | 23 | 25 | 53,5 |

Łuki 45° zaprasowywane do gazu


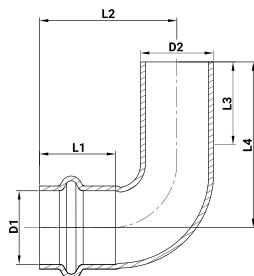
| Indeks | Rozmiar | øD [mm] | L1 [mm] | L2 [mm] |
|---------------|---------|---------|---------|---------|
| CA/ZMGV-41-15 | 15 | 15,2 | 22 | 27,5 |
| CA/ZMGV-41-18 | 18 | 18,2 | 22 | 29 |
| CA/ZMGV-41-22 | 22 | 22,2 | 23 | 31 |
| CA/ZMGV-41-28 | 28 | 28,2 | 24 | 34 |

Łuki nypłowe 45° zaprasowywane do gazu


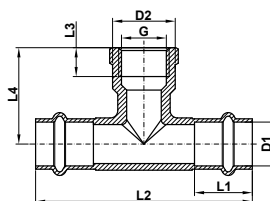
| Indeks | Rozmiar | øD1 [mm] | øD2 [mm] | L1 [mm] | L2 [mm] | L3 [mm] | L4 [mm] |
|---------------|---------|----------|----------|---------|---------|---------|---------|
| CA/ZMGV-40-15 | 15 | 15,2 | 15 | 22 | 27,5 | 24 | 33 |
| CA/ZMGV-40-18 | 18 | 18,2 | 18 | 22 | 28 | 24 | 35 |
| CA/ZMGV-40-22 | 22 | 22,2 | 22 | 23 | 30 | 25 | 36 |
| CA/ZMGV-40-28 | 28 | 28,2 | 28 | 24 | 33 | 25 | 39 |

Łuki 90° zaprasowywane do gazu


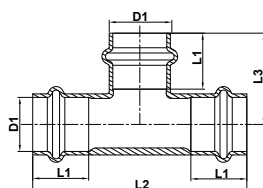
| Indeks | Rozmiar | øD1 [mm] | L1 [mm] | L2 [mm] |
|--------------|---------|----------|---------|---------|
| CA/ZMGV-2-15 | 15 | 15,2 | 22 | 36,5 |
| CA/ZMGV-2-18 | 18 | 18,2 | 22 | 39 |
| CA/ZMGV-2-22 | 22 | 22,2 | 23 | 41,5 |
| CA/ZMGV-2-28 | 28 | 28,2 | 24 | 55 |

Łuki nypłowe 90° zaprasowywane do gazu


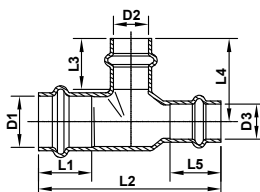
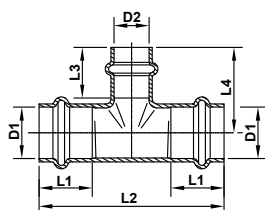
| Indeks | Rozmiar | øD1 [mm] | øD2 [mm] | L1 [mm] | L2 [mm] | L3 [mm] | L4 [mm] |
|--------------|---------|----------|----------|---------|---------|---------|---------|
| CA/ZMGV-1-15 | 15 | 15,2 | 15 | 22 | 36,5 | 24 | 40 |
| CA/ZMGV-1-18 | 18 | 18,2 | 18 | 22 | 39,0 | 24 | 44 |
| CA/ZMGV-1-22 | 22 | 22,2 | 22 | 23 | 41,5 | 25 | 50 |
| CA/ZMGV-1-28 | 28 | 28,2 | 28 | 24 | 55,0 | 25 | 61 |

Trójniki GW zaprasowywane do gazu


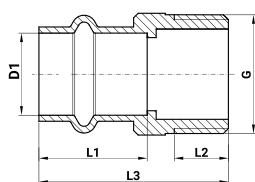
| Indeks | Rozmiar | øD1 [mm] | G | øD2 [mm] | L1 [mm] | L2 [mm] | L3 [mm] | L4 [mm] |
|-----------------------|-----------|----------|------|----------|---------|---------|---------|---------|
| CA/ZMGV130G-15X1/2X15 | 15x1/2x15 | 15,2 | 1/2" | 26,5 | 22 | 80 | 12 | 21 |
| CA/ZMGV130G-18X1/2X18 | 18x1/2x18 | 18,2 | 1/2" | 26,5 | 24 | 90 | 12 | 40 |
| CA/ZMGV130G-22X3/4X22 | 22x3/4x22 | 22,2 | 3/4" | 26,5 | 28 | 100 | 13 | 29 |
| CA/ZMGV130G-28X1/2X28 | 28x1/2x28 | 28,2 | 1/2" | 26,5 | 30 | 89 | 12 | 32 |

Trójniki zaprasowywane do gazu


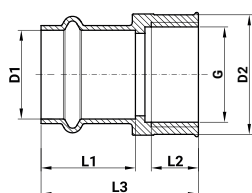
| Indeks | Rozmiar | øD1 [mm] | L1 [mm] | L2 [mm] | L3 [mm] |
|----------------|---------|----------|---------|---------|---------|
| CA/ZMGV-130-15 | 15 | 15,2 | 22 | 80 | 33,5 |
| CA/ZMGV-130-18 | 18 | 18,2 | 22 | 82 | 34 |
| CA/ZMGV-130-22 | 22 | 22,2 | 23 | 88 | 37,5 |
| CA/ZMGV-130-28 | 28 | 28,2 | 24 | 95 | 43 |

Trójniki redukcyjne zaprasowywane do gazu


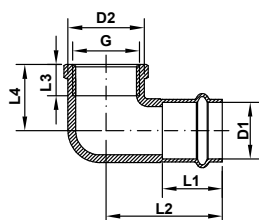
| Indeks | Rozmiar | øD1 [mm] | øD2 [mm] | øD3 [mm] | L1 [mm] | L2 [mm] | L3 [mm] | L4 [mm] | L5 [mm] |
|---------------------|----------|----------|----------|----------|---------|---------|---------|---------|---------|
| CA/ZMGV-130R-221515 | 22x15x15 | 22,2 | 15,2 | 15,2 | 23 | 79 | 22 | 36 | 22 |
| CA/ZMGV-130R-221522 | 22x15x22 | 22,2 | 15,2 | - | 23 | 80 | 22 | 37 | - |
| CA/ZMGV-130R-222215 | 22x22x15 | 22,2 | 22,2 | 15,2 | 23 | 82 | 23 | 37 | 22 |
| CA/ZMGV-130R-281528 | 28x15x28 | 28,2 | 15,2 | - | 24 | 80 | 22 | 39,5 | - |
| CA/ZMGV-130R-282228 | 28x22x28 | 28,2 | 22,2 | - | 24 | 90 | 23 | 42 | - |

Nyple przejściowe zaprasowywane do gazu


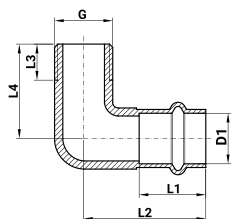
| Indeks | Rozmiar | øD1 [mm] | G | L1 [mm] | L2 [mm] | L3 [mm] |
|---------------------|---------|----------|------|---------|---------|---------|
| CA/ZMGV-243G-15X1/2 | 15x1/2" | 15,2 | 1/2" | 22 | 12 | 41 |
| CA/ZMGV-243G-15X3/4 | 15x3/4" | 15,2 | 3/4" | 22 | 13 | 45 |
| CA/ZMGV-243G-18X1/2 | 18x1/2" | 18,2 | 1/2" | 24 | 12 | 41 |
| CA/ZMGV-243G-18X3/4 | 18x3/4" | 18,2 | 3/4" | 24 | 12 | 42 |
| CA/ZMGV-243G-22X1/2 | 22x1/2" | 22,2 | 1/2" | 28 | 12 | 47 |
| CA/ZMGV-243G-22X3/4 | 22x3/4" | 22,2 | 3/4" | 28 | 13 | 47 |
| CA/ZMGV-243G-22X1 | 22x1" | 22,2 | 1" | 28 | 15 | 53,5 |
| CA/ZMGV-243G-28X1 | 28x1" | 28,2 | 1" | 30 | 15 | 56 |

Mufy przejściowe zaprasowywane do gazu


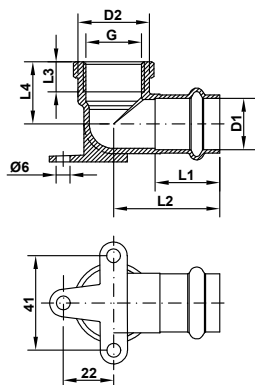
| Indeks | Rozmiar | øD1 [mm] | G | D2 [mm] | L1 [mm] | L2 [mm] | L3 [mm] |
|---------------------|---------|----------|------|---------|---------|---------|---------|
| CA/ZMGV-270G-15X1/2 | 15x1/2" | 15,2 | 1/2" | 26,5 | 22 | 11 | 40 |
| CA/ZMGV-270G-15X3/4 | 15x3/4" | 15,2 | 3/4" | 32,5 | 22 | 13 | 42,5 |
| CA/ZMGV-270G-18X1/2 | 18x1/2" | 18,2 | 1/2" | 26,5 | 24 | 11 | 41 |
| CA/ZMGV-270G-18X3/4 | 18x3/4" | 18,2 | 3/4" | 32,5 | 24 | 13 | 44 |
| CA/ZMGV-270G-22X1/2 | 22x1/2" | 22,2 | 1/2" | 26,5 | 28 | 12 | 43,5 |
| CA/ZMGV-270G-22X3/4 | 22x3/4" | 22,2 | 3/4" | 32,5 | 28 | 13 | 46 |
| CA/ZMGV-270G-28X1 | 28x1" | 28,2 | 1" | 38,5 | 30 | 15 | 50 |

Kolana GW zaprasowywane do gazu


| Indeks | Rozmiar | øD1 [mm] | G | D2 [mm] | L1 [mm] | L2 [mm] | L3 [mm] | L4 [mm] |
|-------------------|---------|----------|------|---------|---------|---------|---------|---------|
| CA/ZMGV-90-15X1/2 | 15x1/2" | 15,2 | 1/2" | 26,5 | 22 | 40,5 | 11 | 21,5 |
| CA/ZMGV-90-22X3/4 | 22x3/4" | 22,2 | 3/4" | 32,5 | 28 | 52 | 12 | 27 |

Kolana GZ zaprasowywane do gazu


| Indeks | Rozmiar | $\phi D1$ [mm] | G | L1 [mm] | L2 [mm] | L3 [mm] | L4 [mm] |
|-------------------|---------|-------------------|------|------------|------------|------------|------------|
| CA/ZMGV-92-15X1/2 | 15x1/2" | 15,2 | 1/2" | 22 | 38 | 14 | 33 |
| CA/ZMGV-92-22X3/4 | 22x3/4" | 22,2 | 3/4" | 28 | 49 | 13 | 43 |

Kolano z łapami zaprasowywane do gazu


| Indeks | Rozmiar | $\phi D1$ [mm] | $\phi D2$ [mm] | G | L1 [mm] | L2 [mm] | L3 [mm] | L4 [mm] |
|--------------------|---------|-------------------|-------------------|------|------------|------------|------------|------------|
| CA/ZMGV-471-15X1/2 | 15x1/2" | 15,2 | 26,5 | 1/2" | 22 | 46 | 12 | 23 |