

# cluro system

The ecoSTER90 wired room panel

Cat. No. D/S-SP-PP90B

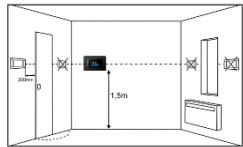
Cat. No. D/S-SP-PP90C



## GENERAL INFORMATION

The ecoSTER90 room panel with a built-in temperature sensor acts as a room thermostat for the floor heating system. The room panel also serves as a control panel for the ecoFLOOR controller.

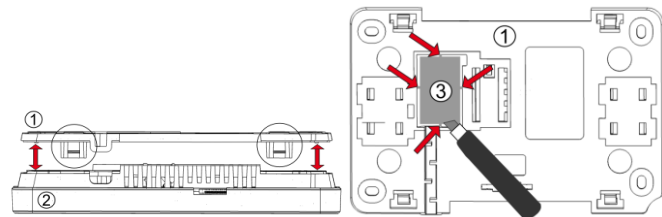
## PANEL ASSEMBLY



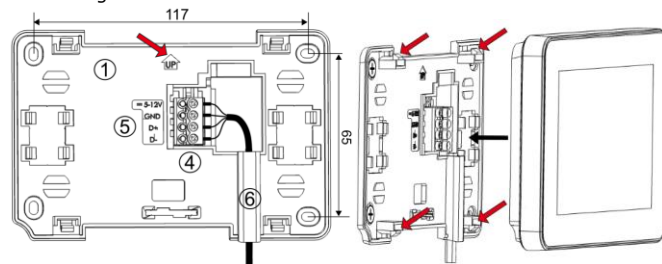
The room panel is intended to be installed on the wall or placing it on the flat surface, only in dry room. Room panel cannot be used under water vapor condensation conditions and must be protected against water. Room panel must be installed on the height allowing its convenient use, typically

1.5 m over the floor. In order to reduce the interference of temperature measurement by the room panel, avoid sunny places with poor air circulation, close to the heating devices and places directly at doors and windows (typically at least 200 mm from the door edge).

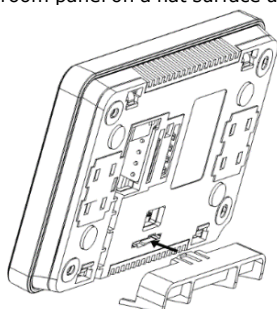
Disconnect the installation frame (1) from the back of room panel housing (2). The frame is attached to the panel housing with latches. Use a flat screwdriver to detach the frame.



Using sharp tool cut out holes in four places of the cover (3) for the screw terminals. Connect the wires of a transmission cable, connecting room panel with the ecoFLOOR controller, to the screw terminal (4) as described on the table plate (5). Cable connecting the panel with the controller can be recessed in the wall or can run over its surface – in such case the cable should be additionally placed in the cable channel (6) of the installation frame. The cable connecting panel with the controller cannot be conducted along with the cables of the building mains. The cable should not be routed near devices emitting strong electromagnetic field.



Drill holes in the wall and using screws (max.  $\varnothing$  3 mm) fix the installation frame in the selected place on the wall, maintaining its proper position (UP). The spacing of holes can be determined by placing the frame on the wall. Next fix the panel to the installation frame using latches. In order to place the room panel on a flat surface use a dedicated stand.



## TECHNICAL DATA

Power supply	5...12 VDC – from the external power supply or socket of the controller.
Current drawn (with supply voltage 12V)	0.15 A
Protection level	IP 20
Operation temp.	0...50°C
Storage temp.	0...65°C
Temp. measurement range	0...50°C
Temperature control range	5...35°C
Hysteresis	0.2...5°C
Relative humidity	5...85%, without water vapor condensation.
Display	Color, graphical 480x272 pix, with touch panel.
Dimensions	144 mm x 97 mm x 20 mm
Weight	0.2 kg
Standards	EN 60730-2-9 EN 60730-1

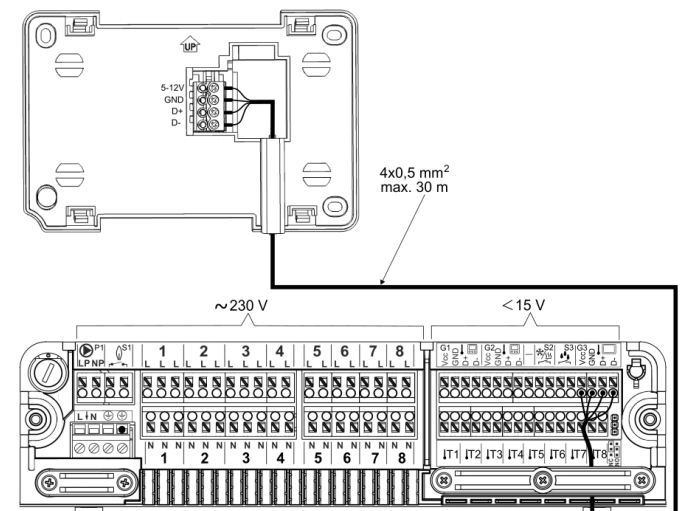
When selecting the cable connecting room panel with the main controller apply to the principle, that the resistance on one wire in the cable did not exceed  $8 \Omega$  and the total length of the cable was up to 100 m. The higher the cable length the bigger should be the cross section of the cable. Do not confuse the poles of the power supply cables, as this can damage the room panel and controller.

## ELECTRICAL CONNECTION

### ATTENTION!!!

The panel (maximum 2 panels) must be connected only to the G3 connector, as shown in the scheme below.

Multi-wire connection (for 2 panels) is best made using "WAGO" type connectors so as not to insert several wires into one socket!!!



# cluro system

### Manufacturer:

PLUM Sp. z o.o.

ul. Wspólna 19, Ignatki, 16-001 Kleosin, Poland

plum.pl

National Waste Database No. 000009381

### Manufacturer's authorized representative:

ARKA Sp. z o.o. Sp.k.

ul. Ogrodowa 5, 76-004 Sianów, Poland

+48 94 341 77 19

arka-instalacje.pl